

**EXPLANATORY PLAN OF EASEMENT OVER
PART OF LOT 2, DISTRICT LOT 1600,
CARIBOO DISTRICT, PLAN BCP42930.**

PLAN EPP19466

BCGS 93G.086

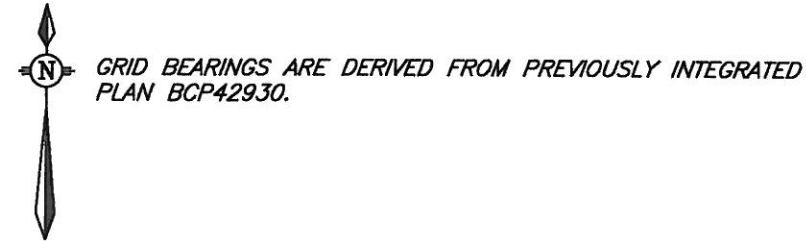
PURSUANT TO SECTION 99(1)(e) OF THE LAND TITLE ACT.

THIS PLAN LIES WITHIN INTEGRATED SURVEY
AREA No. 39, PRINCE GEORGE, NAD83 (CSRS)

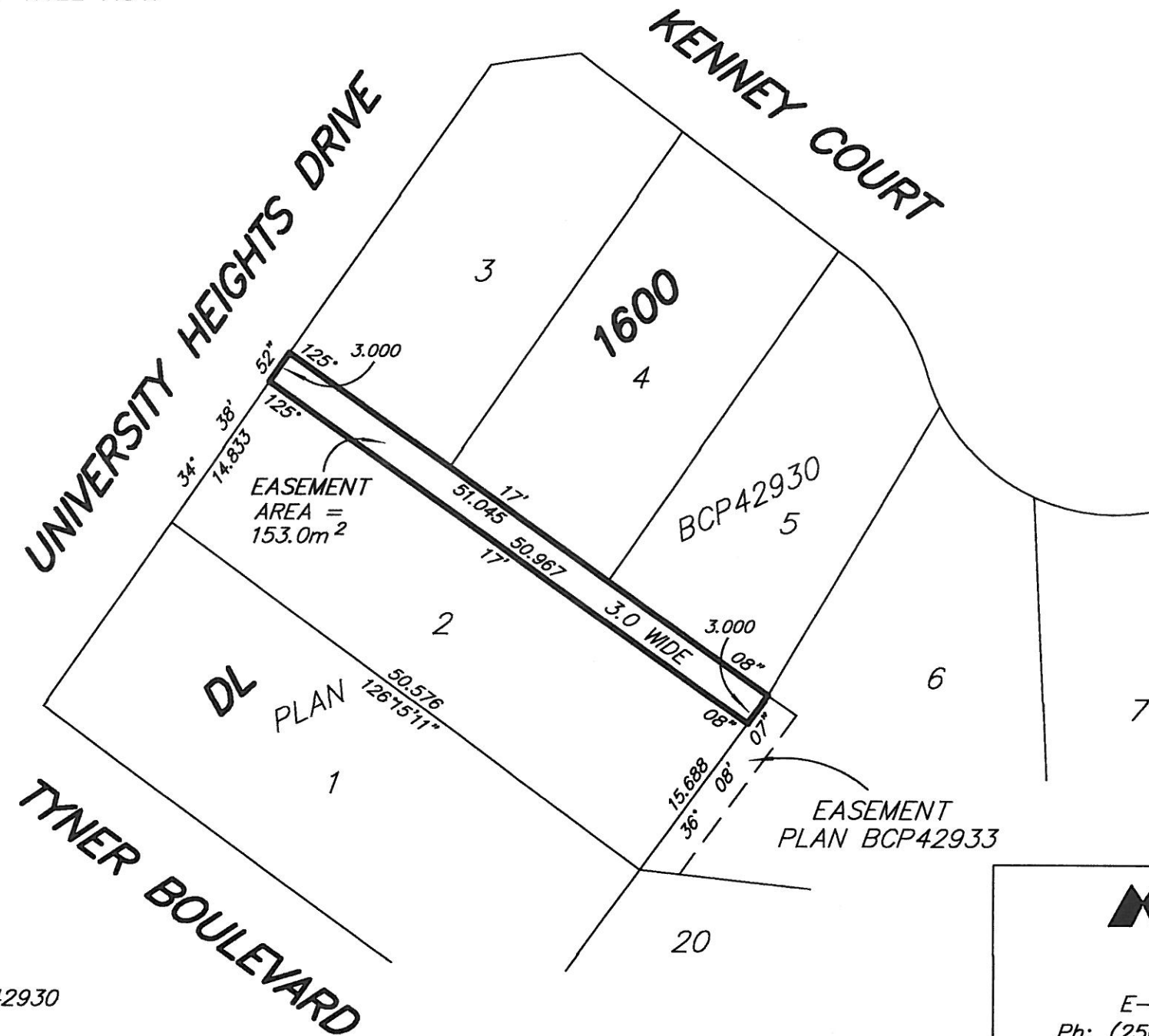
THE INTENDED PLOT SIZE OF THIS PLAN IS 432mm IN WIDTH BY
280mm IN HEIGHT (B SIZE) WHEN PLOTTED AT A SCALE OF 1:500



ALL DISTANCES ARE HORIZONTAL GROUND-LEVEL AND SHOWN IN
METRES AND DECIMALS THEREOF, UNLESS OTHERWISE INDICATED.



GRID BEARINGS ARE DERIVED FROM PREVIOUSLY INTEGRATED
PLAN BCP42930.



THIS PLAN IS BASED ON THE FOLLOWING LAND TITLE
AND SURVEY AUTHORITY OF BC RECORDS: PLAN BCP42930
DAVID E. STORBACK, BCLS CLS
3rd DAY OF APRIL, 2012

THIS PLAN LIES WITHIN THE REGIONAL DISTRICT OF FRASER - FORT GEORGE.

McElhanney
McElhanney Associates
Land Surveying Ltd.
Prince George, B.C.

E-mail: pgmals@mcelhanney.com
Ph: (250) 561-2229 Fax: (250) 563-1941

DL- 1600	File No. - 5993-E
----------	-------------------

MARCH 30, 2012