

**SUBDIVISION PLAN OF PART OF PARCEL 1, EXCEPT PART ON PLAN BCP25199, EPP18682 AND EPP18683, DISTRICT LOT 8173, 8176, 8179 AND 8180, CARIBOO DISTRICT, PLAN BCP10189; AND PART OF DISTRICT LOT 8180, CARIBOO DISTRICT EXCEPT PLANS B3608, 6932, 7274, 22207, H735, H700, PGP43039, PART ON PLAN BCP10188, PART ON PLAN BCP28701, PLANS EPP18682 AND EPP18683.**

**PLAN EPP18684**

BCGS 93G.087

PURSUANT TO SECTION 67 OF THE LAND TITLE ACT.

THIS PLAN LIES WITHIN INTEGRATED SURVEY AREA No. 39, PRINCE GEORGE, NADB3 (CSRS)

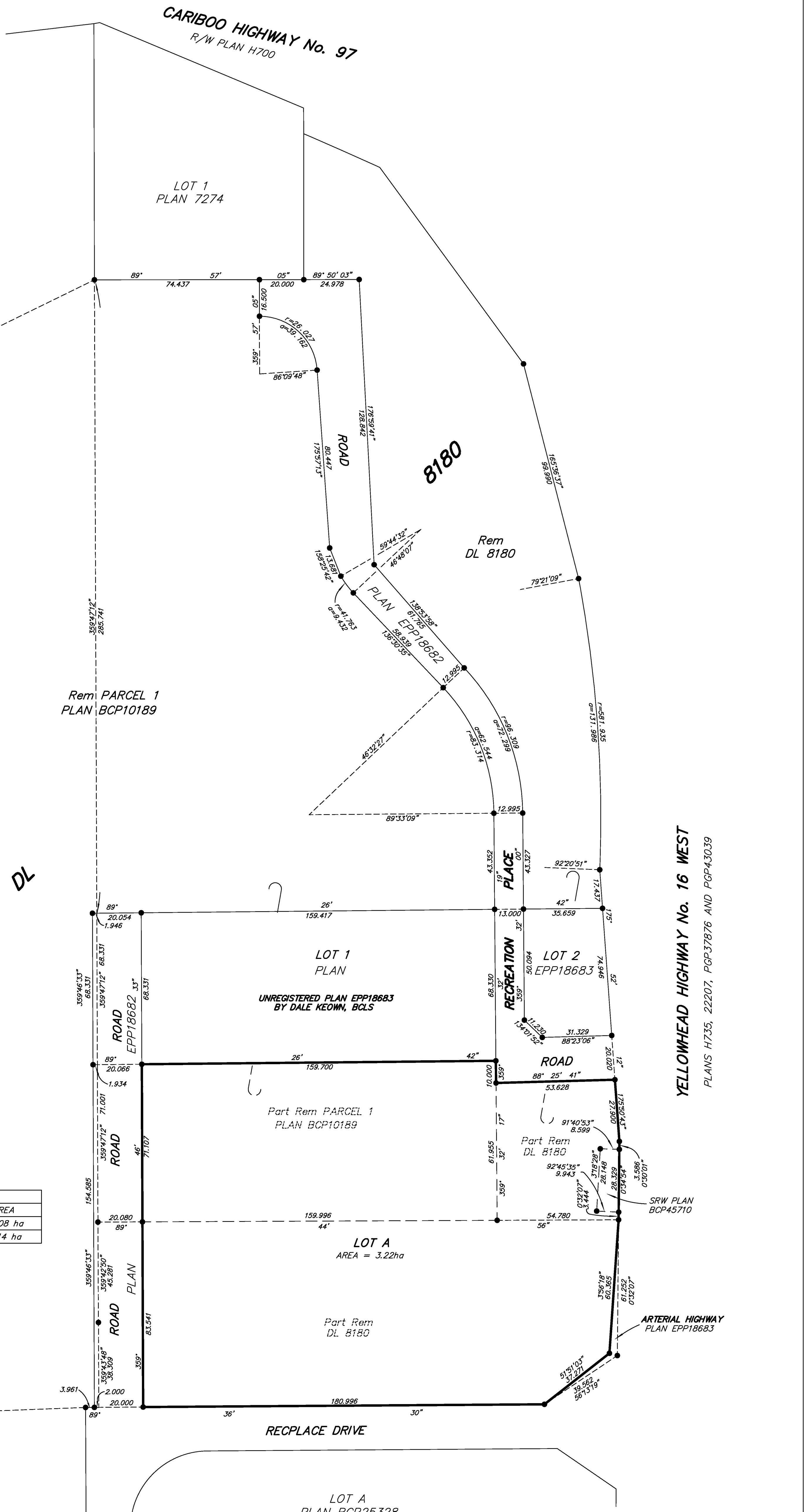
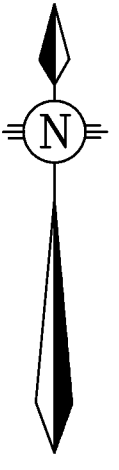
THE INTENDED PLOT SIZE OF THIS PLAN IS 560mm IN WIDTH BY 864mm IN HEIGHT (D SIZE) WHEN PLOTTED AT A SCALE OF 1:1000

20m 0 20 40 60 80m

ALL DISTANCES ARE SHOWN IN METRES AND DECIMALS THEREOF, UNLESS OTHERWISE INDICATED.

**LEGEND**  
 GRID BEARINGS ARE DERIVED FROM OBSERVATIONS BETWEEN GEODETIC CONTROL MONUMENTS 85H1126 AND 85H1130.  
 ● DENOTES CONTROL MONUMENT  
 ○ DENOTES STANDARD IRON POST FOUND  
 ○ DENOTES STANDARD IRON POST PLACED

THIS PLAN SHOWS HORIZONTAL GROUND-LEVEL DISTANCES UNLESS OTHERWISE SPECIFIED, TO COMPUTE GRID DISTANCES, MULTIPLY GROUND-LEVEL DISTANCES BY THE AVERAGE COMBINED FACTOR OF 0.9995124 WHICH HAS BEEN DERIVED FROM 85H1126 AND 85H1130.



BOOK OF REFERENCE	
DESCRIPTION	AREA
PART Rem DL 8180	2.08 ha
PART Rem PARCEL 1, PLAN BCP10189	1.14 ha

A COVENANT IN THE NAME OF THE CITY OF PRINCE GEORGE PURSUANT TO SECTION 219 IS A CONDITION OF APPROVAL FOR SUBDIVISION.

THIS PLAN LIES WITHIN THE JURISDICTION OF THE APPROVING OFFICER FOR THE MINISTRY OF TRANSPORTATION AND INFRASTRUCTURE.

THIS PLAN LIES WITHIN THE JURISDICTION OF THE APPROVING OFFICER FOR THE CITY OF PRINCE GEORGE.  
 CPG File: SD100382

THE FIELD SURVEY REPRESENTED BY THIS PLAN WAS COMPLETED ON THE 20th DAY OF JUNE, 2012.  
 DAVID E. STORBACK, BCLS, CLS

THIS PLAN LIES WITHIN THE REGIONAL DISTRICT OF FRASER - FORT GEORGE.

**McElhanney**  
 McElhanney Associates  
 Land Surveying Ltd.  
 Prince George, B.C.  
 E-mail: pgm@mcElhanney.com  
 Ph: (250) 561-2229 Fax: (250) 563-1941

DL - 8180	File No. - 5977 S
-----------	-------------------

CPG File: SD100382