

**REFERENCE PLAN TO ACCOMPANY BYLAW NO. 8397,  
CITY OF PRINCE GEORGE TO CLOSE ROAD DEDICATED  
BY PLAN 1268, ADJACENT TO LOT A, PLAN PGP35522,  
BOTH IN DL 343, CARIBOO DISTRICT.**

**PLAN EPP18028**

BCGS 93G.097

PURSUANT TO SECTION 120 OF THE LAND TITLE ACT  
AND SECTION 40 OF THE COMMUNITY CHARTER.

THIS PLAN LIES WITHIN INTEGRATED SURVEY  
AREA No. 39, PRINCE GEORGE, NADB3 (CSRS)

THE INTENDED PLOT SIZE OF THIS PLAN IS 560mm IN WIDTH BY  
432mm IN HEIGHT (C SIZE) WHEN PLOTTED AT A SCALE OF 1:750



ALL DISTANCES ARE SHOWN IN METRES AND  
DECIMALS THEREOF, UNLESS OTHERWISE INDICATED.

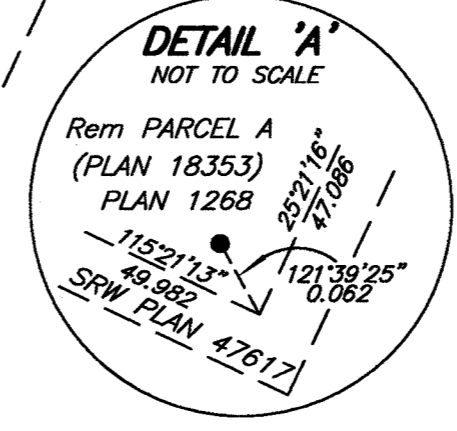
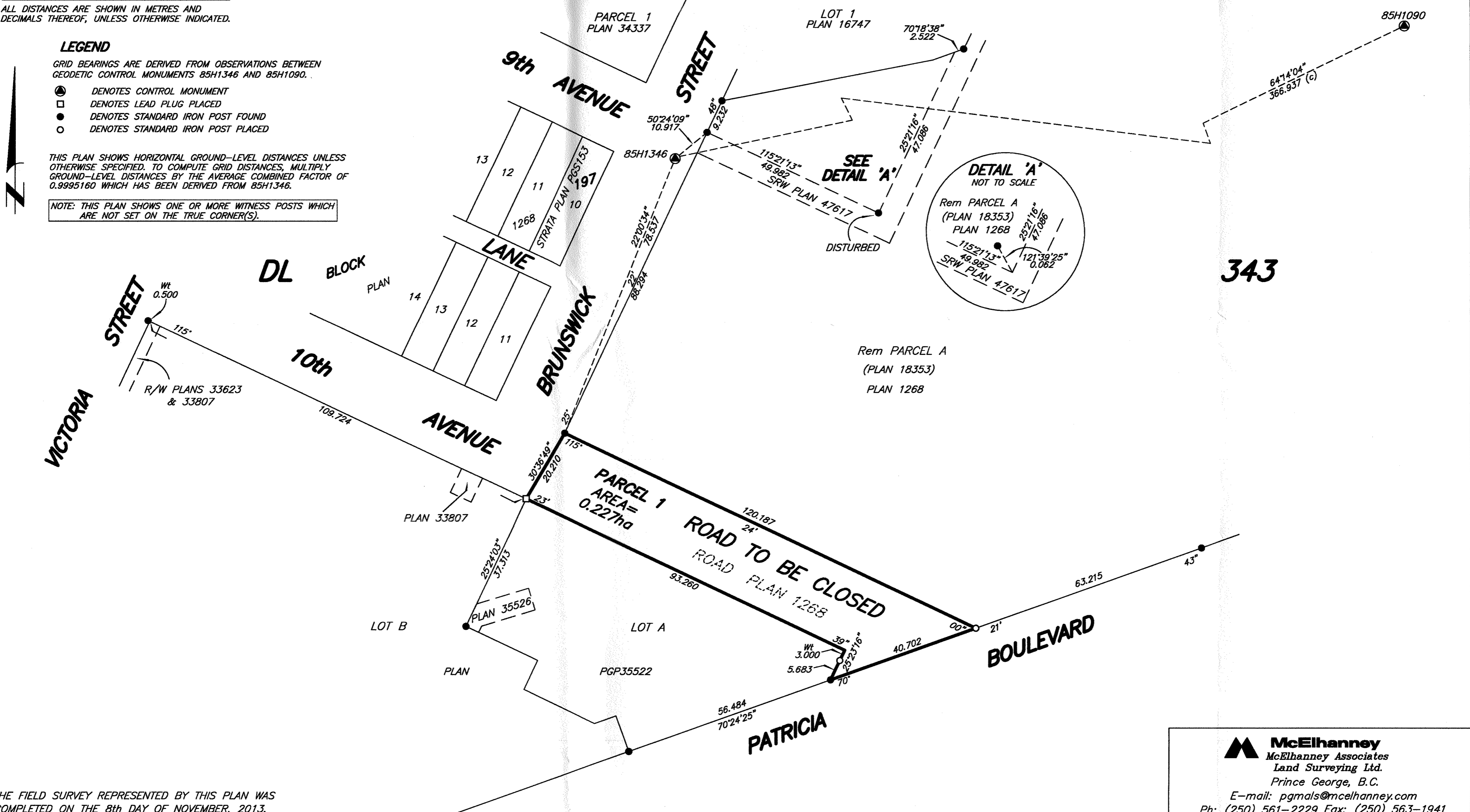
**LEGEND**

GRID BEARINGS ARE DERIVED FROM OBSERVATIONS BETWEEN  
GEODETIC CONTROL MONUMENTS 85H1346 AND 85H1090.

- DENOTES CONTROL MONUMENT
- DENOTES LEAD PLUG PLACED
- DENOTES STANDARD IRON POST FOUND
- DENOTES STANDARD IRON POST PLACED

THIS PLAN SHOWS HORIZONTAL GROUND-LEVEL DISTANCES UNLESS  
OTHERWISE SPECIFIED. TO COMPUTE GRID DISTANCES, MULTIPLY  
GROUND-LEVEL DISTANCES BY THE AVERAGE COMBINED FACTOR OF  
0.9995160 WHICH HAS BEEN DERIVED FROM 85H1346.

NOTE: THIS PLAN SHOWS ONE OR MORE WITNESS POSTS WHICH  
ARE NOT SET ON THE TRUE CORNER(S).



THE FIELD SURVEY REPRESENTED BY THIS PLAN WAS  
COMPLETED ON THE 8th DAY OF NOVEMBER, 2013.  
DALE KEOWN, BCLS 468

THIS PLAN LIES WITHIN THE REGIONAL DISTRICT OF FRASER - FORT GEORGE.

**McElhanney**  
McElhanney Associates  
Land Surveying Ltd.  
Prince George, B.C.  
E-mail: pgmals@mcelhanney.com  
Ph: (250) 561-2229 Fax: (250) 563-1941

DL- 343	File No. - 5972RC
CPG FILE NO. 1119	R-2