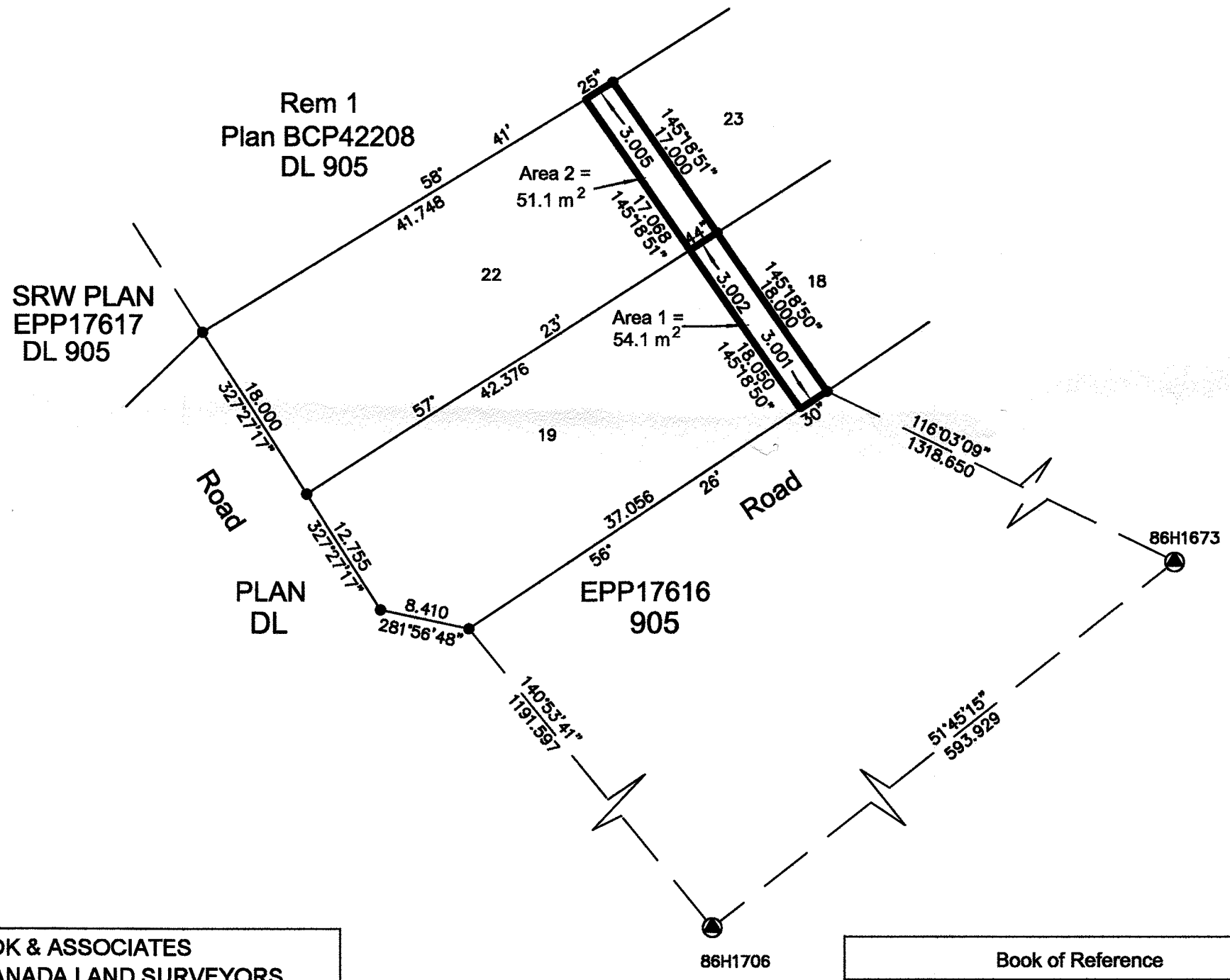


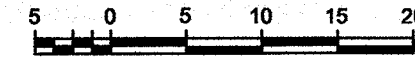
PLAN EPP17620



REFERENCE PLAN OF EASEMENT OVER PARTS OF LOTS 19 AND 22, DISTRICT LOT 905, CARIBOO DISTRICT, PLAN EPP17616

BCGS 93G.086

Pursuant to Section 99(1)(e) of the Land Title Act



All distances are in metres

The intended plot size of this plan is 432 mm in width
by 280 mm in height when plotted at scale 1:500
(use B size sheet)

- Standard Iron Post Found
- ⊙ Control Monument Found

Grid bearings are derived from observations
between control monuments 86H1673 and 86H1706
Integrated Survey Area Number 39, City of
Prince George, NAD 83(CSRS)

This plan shows ground-level measured distances
Prior to computation of UTM coordinates
multiply by combined factor of 0.9995000

This plan lies within the Regional District of Fraser-Fort George

The field survey represented by this plan
was completed by Richard E Gook, BCLS
on the 9th day of September, 2011

R.E. GOOK & ASSOCIATES
B.C. & CANADA LAND SURVEYORS
 886 VANCOUVER STREET
 PRINCE GEORGE, BC V2L 2P5
 PHONE: 250-564-4242
 FILE: 11-0695PGEase1
 regook@northernsurveys.com

Book of Reference	
Description	Area
Lot 19 DL 905 Plan EPP17616	Area 1 = 54.1 m ²
Lot 22 DL 905 Plan EPP17616	Area 2 = 51.1 m ²