

**REFERENCE PLAN OF STATUTORY RIGHT  
OF WAY WITHIN LOTS 3, 4, 10 AND 11,  
DISTRICT LOT 2014, CARIBOO DISTRICT,  
PLAN EPP16518.**

**PLAN EPP16519**

BCGS 93G.087

PURSUANT TO SECTION 113 OF THE  
LAND TITLE ACT.

THIS PLAN LIES WITHIN INTEGRATED SURVEY  
AREA No. 39, PRINCE GEORGE, NAD83 (CSRS)

THE INTENDED PLOT SIZE OF THIS PLAN IS 432mm IN WIDTH BY  
560mm IN HEIGHT (C SIZE) WHEN PLOTTED AT A SCALE OF 1:500



ALL DISTANCES ARE SHOWN IN METRES AND DECIMALS  
THEREOF, UNLESS OTHERWISE INDICATED.



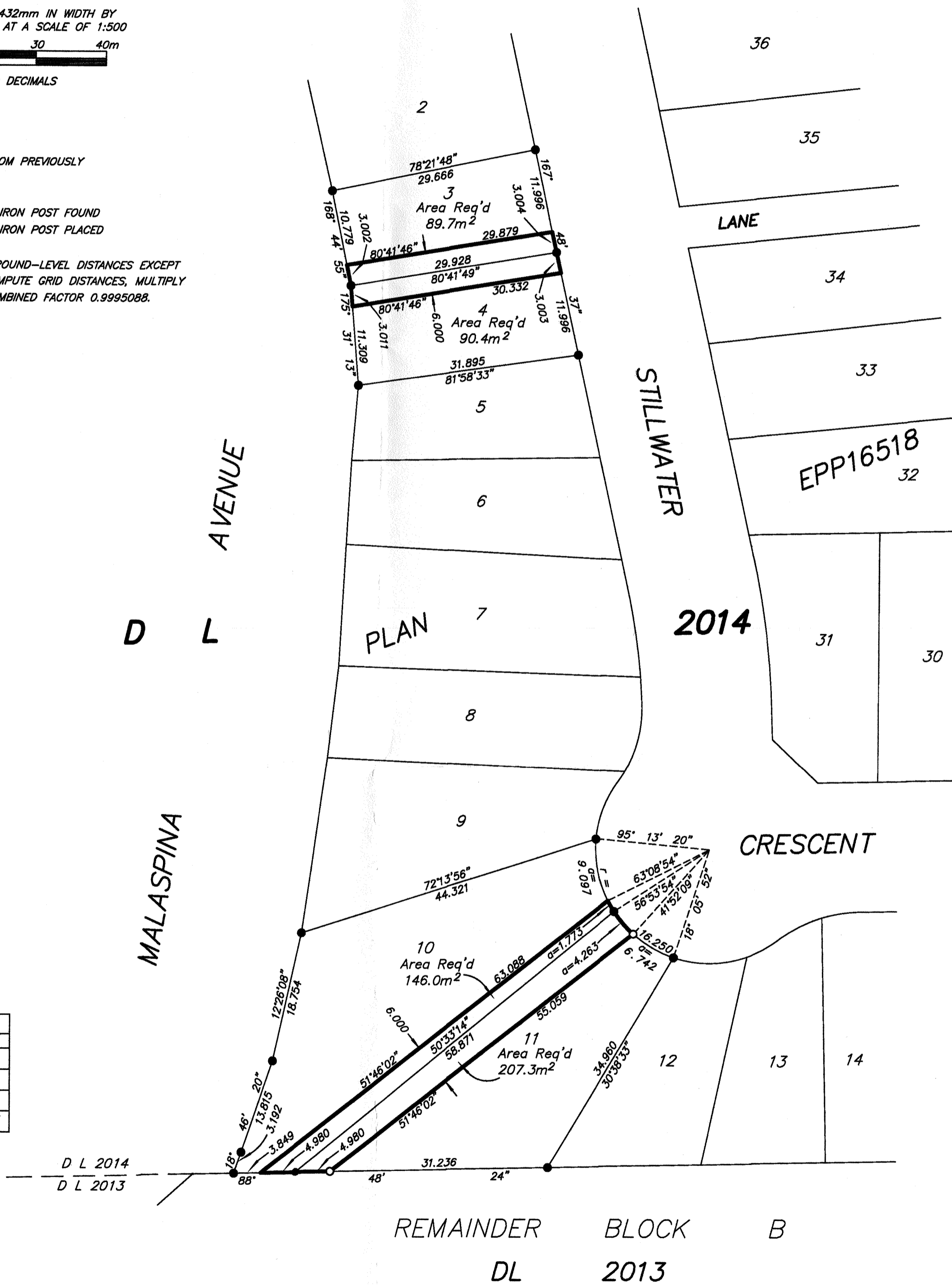
**LEGEND**

GRID BEARINGS ARE DERIVED FROM PREVIOUSLY  
INTEGRATED PLAN EPP16518.

- DENOTES STANDARD IRON POST FOUND
- DENOTES STANDARD IRON POST PLACED

THIS PLAN SHOWS HORIZONTAL GROUND-LEVEL DISTANCES EXCEPT  
WHERE OTHERWISE NOTED. TO COMPUTE GRID DISTANCES, MULTIPLY  
GROUND-LEVEL DISTANCES BY COMBINED FACTOR 0.9995088.

BOOK OF REFERENCE	
DESCRIPTION	AREA
LOT 3, PLAN EPP16518	89.7m <sup>2</sup>
LOT 4, PLAN EPP16518	90.4m <sup>2</sup>
LOT 10, PLAN EPP16518	146.0m <sup>2</sup>
LOT 11, PLAN EPP16518	207.3m <sup>2</sup>



THE FIELD SURVEY REPRESENTED BY THIS PLAN  
WAS COMPLETED BY DALE KEOWN, BCLS  
ON THE 29th DAY OF FEBRUARY, 2012.

**McElhanney**  
McElhanney Associates  
Land Surveying Ltd.  
Prince George, B.C.  
E-mail: pgmals@mcelhanney.com  
Ph: (250) 561-2229 Fax: (250) 563-1941

DL-2014	File No. - 5825-RW
MARCH 7, 2012	

THIS PLAN LIES WITHIN THE REGIONAL DISTRICT OF FRASER - FORT GEORGE.