

**PLAN OF STATUTORY RIGHT OF WAY  
WITHIN LOT 2, DISTRICT LOT 2432,  
CARIBOO DISTRICT, PLAN EPP15809.**

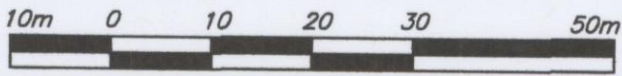
**PLAN EPP15925**

BCGS 93J.007

PURSUANT TO SECTION 113  
OF THE LAND TITLE ACT.

THIS PLAN LIES WITHIN INTEGRATED SURVEY  
AREA No. 39, CITY OF PRINCE GEORGE, NAD83 (CSRS)

THE INTENDED PLOT SIZE OF THIS PLAN IS 432mm IN WIDTH BY  
560mm IN HEIGHT (C SIZE) WHEN PLOTTED AT A SCALE OF 1:750



ALL DISTANCES ARE SHOWN IN METRES AND  
DECIMALS THEREOF, UNLESS OTHERWISE INDICATED.



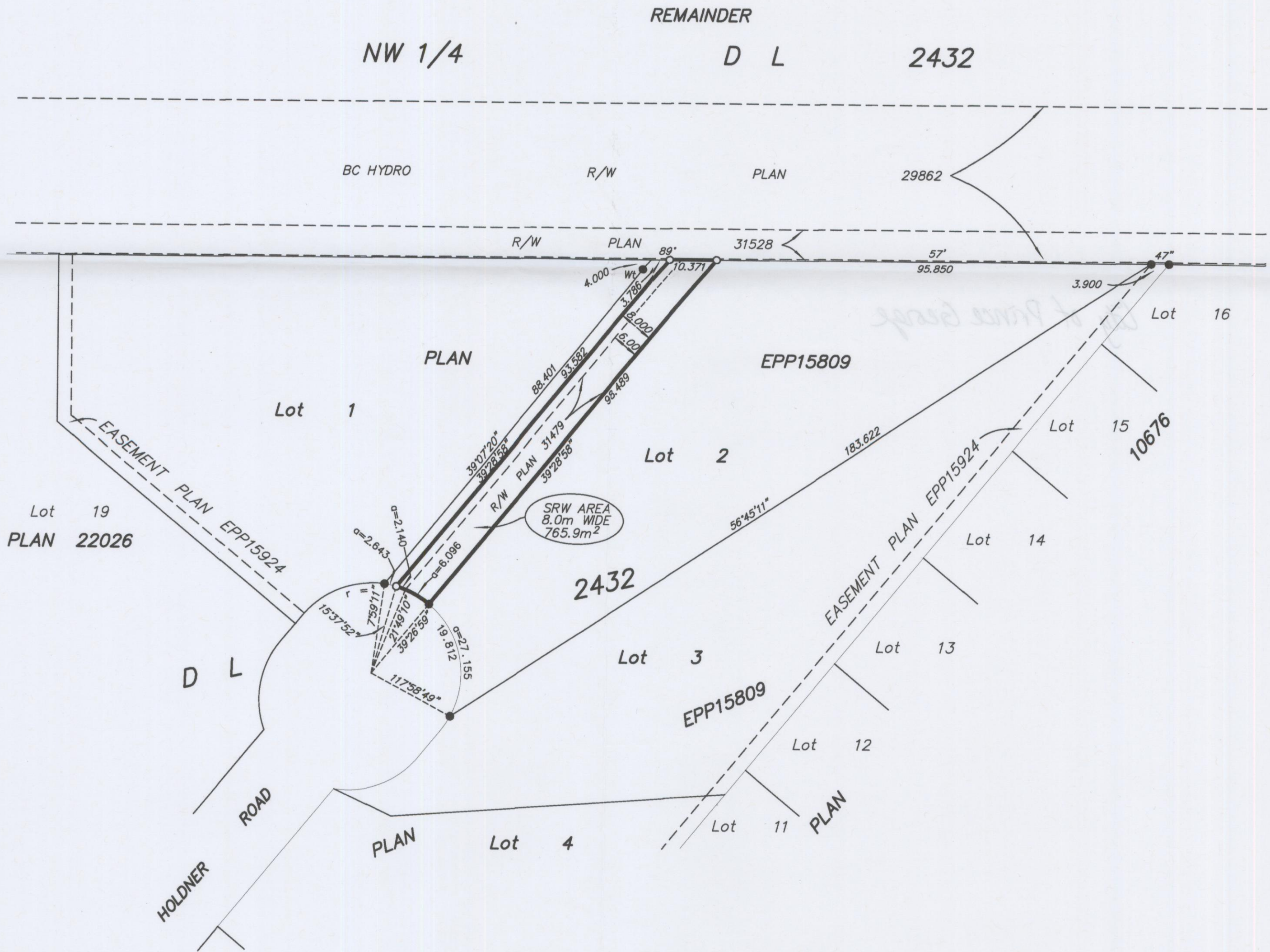
**LEGEND**

GRID BEARINGS ARE DERIVED FROM PREVIOUSLY  
INTEGRATED PLAN EPP15809.

- DENOTES STANDARD IRON POST FOUND
- DENOTES STANDARD IRON POST PLACED

THIS PLAN SHOWS HORIZONTAL GROUND-LEVEL DISTANCES EXCEPT  
WHERE OTHERWISE NOTED. TO COMPUTE GRID DISTANCES, MULTIPLY  
GROUND-LEVEL DISTANCES BY COMBINED FACTOR 0.9994853.

THIS PLAN SHOWS ONE OR MORE WITNESS POSTS  
WHICH ARE NOT SET ON THE TRUE CORNERS.



PG EPP15925 131-966-0170 Filed RCVD:2011-11-29 Page 1 of 1

THE FIELD SURVEY REPRESENTED BY THIS PLAN  
WAS COMPLETED BY DALE KEOWN, BCLS  
ON THE 26th DAY OF OCTOBER, 2011.

THIS PLAN LIES WITHIN THE REGIONAL DISTRICT OF FRASER - FORT GEORGE.

**McElhanney**  
McElhanney Associates  
Land Surveying Ltd.

Prince George, B.C.  
E-mail: pgmals@mcelhanney.com  
Ph: (250) 561-2229 Fax: (250) 563-1941

DL- 2432	File No. - 5958-RW
CPG SD100351	

S00