

REFERENCE PLAN OF EASEMENT WITHIN LOTS 1, 3 AND 4, DISTRICT LOT 2432, CARIBOO DISTRICT, PLAN EPP15809.

PLAN EPP15924

BCGS 93J.007

PURSUANT TO SECTION 99(1)(e)
OF THE LAND TITLE ACT.

THIS PLAN LIES WITHIN INTEGRATED SURVEY
AREA No. 39, CITY OF PRINCE GEORGE, NAD83 (CSRS)

THE INTENDED PLOT SIZE OF THIS PLAN IS 432mm IN WIDTH BY
560mm IN HEIGHT (C SIZE) WHEN PLOTTED AT A SCALE OF 1:750

10m 0 10 20 30 50m

ALL DISTANCES ARE SHOWN IN METRES AND
DECIMALS THEREOF, UNLESS OTHERWISE INDICATED.

LEGEND

GRID BEARINGS ARE DERIVED FROM PREVIOUSLY
INTEGRATED PLAN EPP15809.

• DENOTES STANDARD IRON POST FOUND
X DENOTES 1.5" STEEL PIPE FOUND

THIS PLAN SHOWS HORIZONTAL GROUND-LEVEL DISTANCES EXCEPT
WHERE OTHERWISE NOTED. TO COMPUTE GRID DISTANCES, MULTIPLY
GROUND-LEVEL DISTANCES BY COMBINED FACTOR 0.9994853.

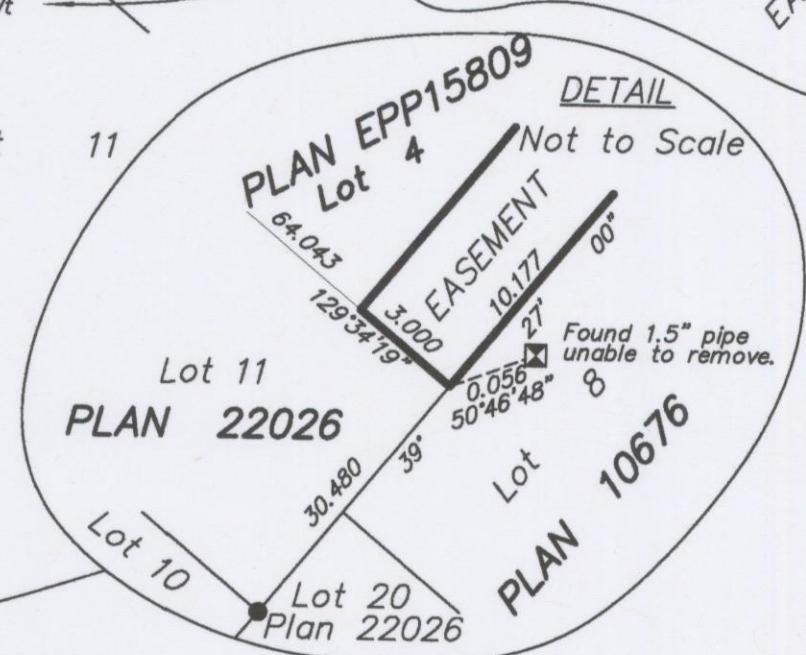
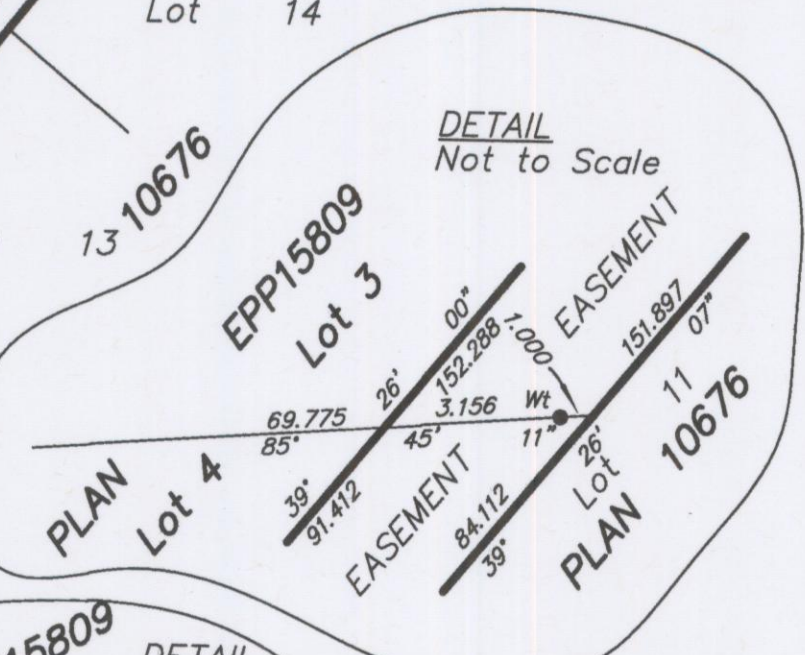
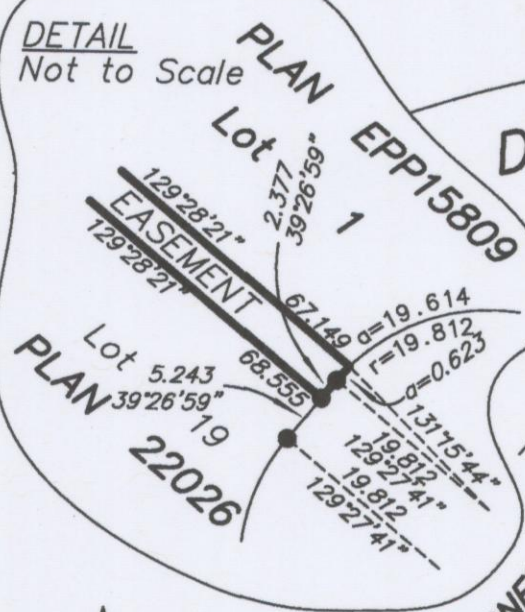
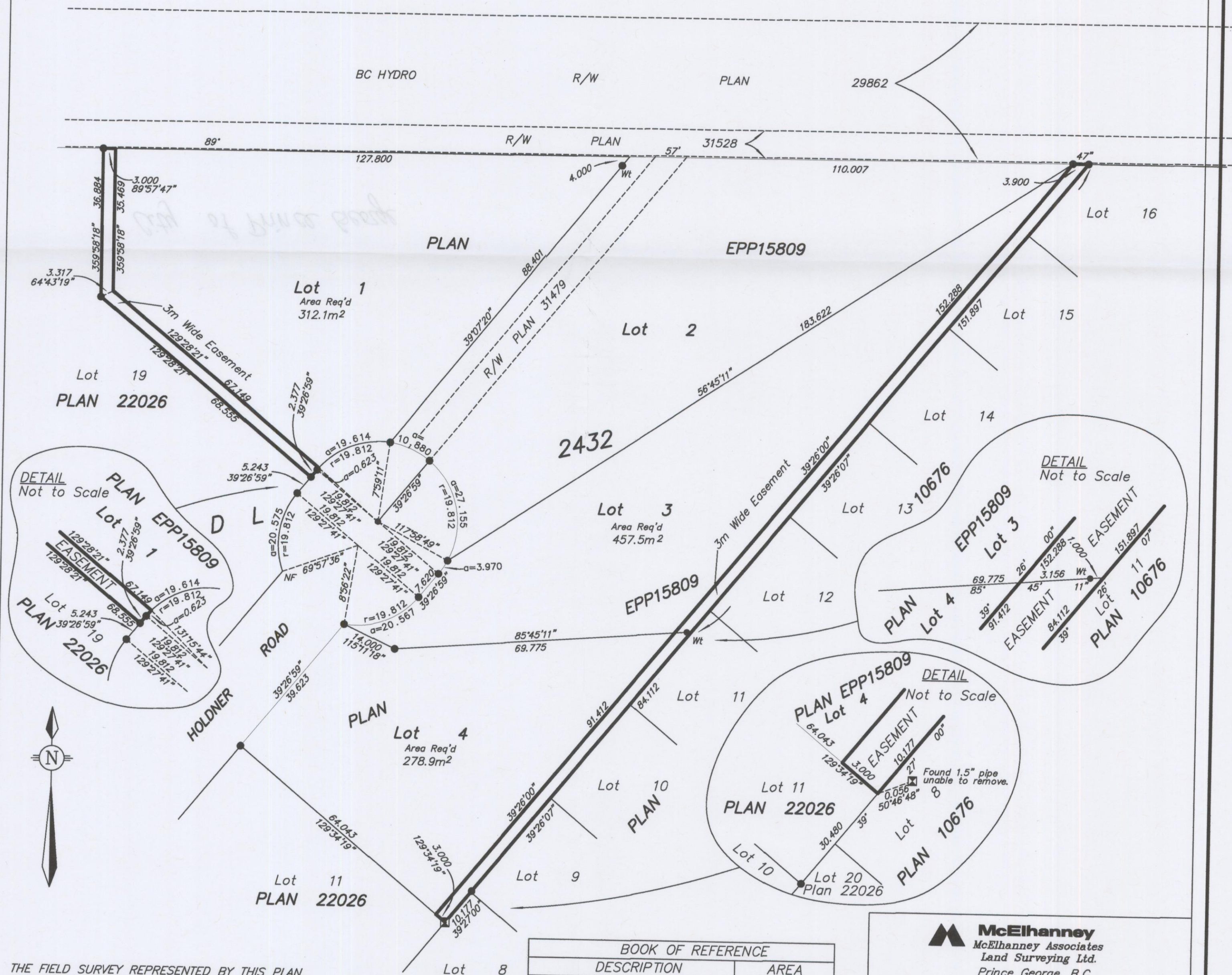
THIS PLAN SHOWS ONE OR MORE WITNESS POSTS
WHICH ARE NOT SET ON THE TRUE CORNERS.

REMAINDER

NW 1/4

D L

2432



THE FIELD SURVEY REPRESENTED BY THIS PLAN
WAS COMPLETED BY DALE KEOWN, BCLS
ON THE 18th DAY OF October, 2011.

THIS PLAN LIES WITHIN THE REGIONAL DISTRICT OF FRASER - FORT GEORGE.

BOOK OF REFERENCE	
DESCRIPTION	AREA
Lot 1, Plan EPP15809, DL 2432	312.1m ²
Lot 3, Plan EPP15809, DL 2432	457.5m ²
Lot 4, Plan EPP15809, DL 2432	278.9m ²



McElhanney
McElhanney Associates
Land Surveying Ltd.
Prince George, B.C.

E-mail: pgmalls@mcelhanney.com
Ph: (250) 561-2229 Fax: (250) 563-1941

DL- 2432 File No. - 5958-E

CPG SD100351