

# PLAN OF SUBDIVISION OF LOT 27, DISTRICT LOT 754, CARIBOO DISTRICT, PLAN 10486, EXCEPT PLAN PGP37903.

## PLAN EPP15742

BCGS 93G.087

### LEGEND

THE INTENDED PLOT SIZE OF THIS PLAN IS 560mm IN WIDTH BY 432mm IN HEIGHT (C SIZE) WHEN PLOTTED AT A SCALE OF 1:500



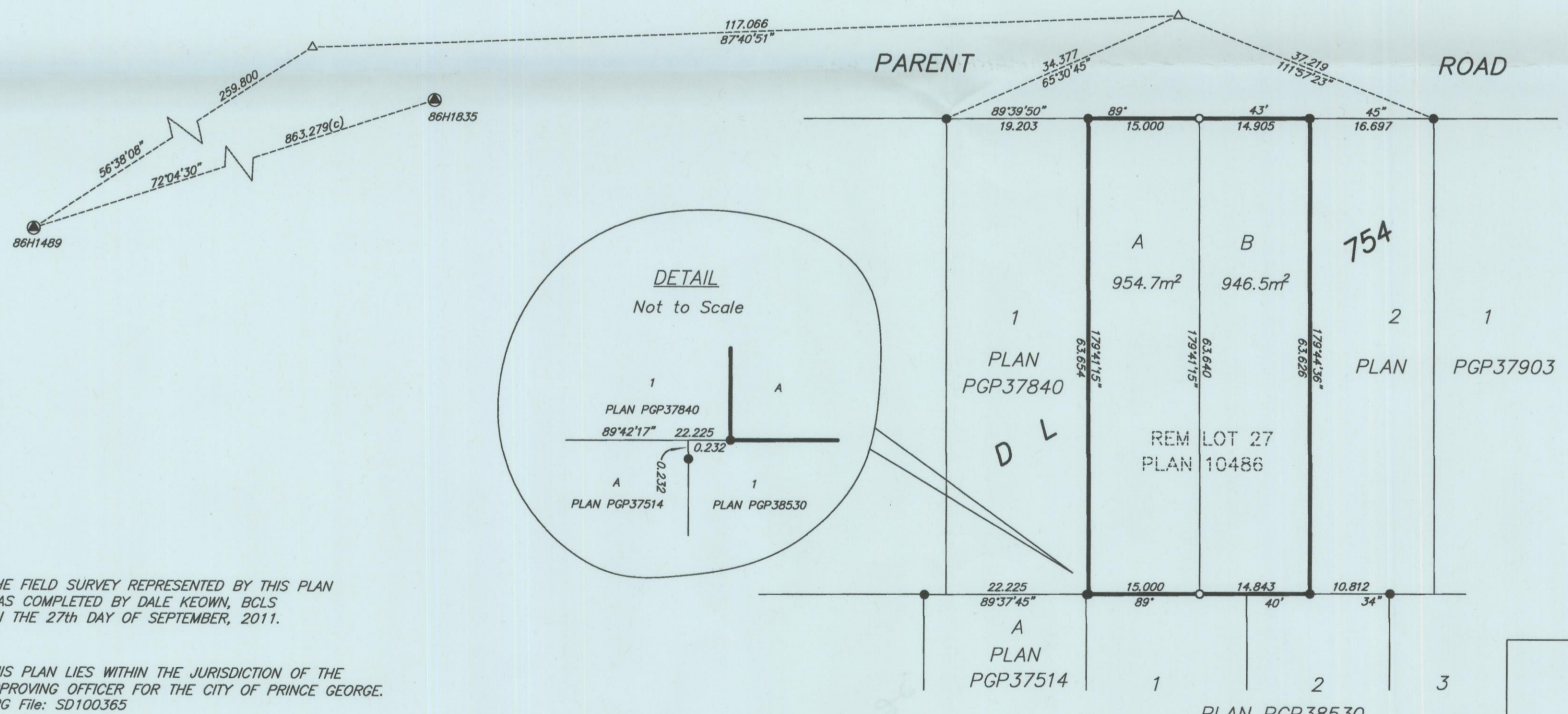
ALL DISTANCES ARE SHOWN IN METRES AND DECIMALS THEREOF, UNLESS OTHERWISE INDICATED.

- DENOTES CONTROL MONUMENT FOUND
- DENOTES STANDARD IRON POST FOUND
- DENOTES STANDARD IRON POST PLACED
- △ DENOTES TRAVERSE HUB PLACED

THIS PLAN LIES WITHIN INTEGRATED SURVEY AREA No. 39, PRINCE GEORGE, NAD83 (CSRS)

GRID BEARINGS ARE DERIVED FROM OBSERVATIONS BETWEEN CONTROL MONUMENTS 86H1489 AND 86H1835

THIS PLAN SHOWS HORIZONTAL GROUND-LEVEL DISTANCES EXCEPT WHERE OTHERWISE NOTED. TO COMPUTE GRID DISTANCES, MULTIPLY GROUND-LEVEL DISTANCES BY COMBINED FACTOR 0.9999096.



THE FIELD SURVEY REPRESENTED BY THIS PLAN WAS COMPLETED BY DALE KEOWN, BCLS ON THE 27th DAY OF SEPTEMBER, 2011.

THIS PLAN LIES WITHIN THE JURISDICTION OF THE APPROVING OFFICER FOR THE CITY OF PRINCE GEORGE. CPG File: SD100365

THIS PLAN LIES WITHIN THE REGIONAL DISTRICT OF FRASER - FORT GEORGE.

**McElhanney**  
 McElhanney Associates  
 Land Surveying Ltd.  
 Prince George, B.C.  
 E-mail: pgmals@mcElhanney.com  
 Ph: (250) 561-2229 Fax: (250) 563-1941

DL- 754	File No. - 5926-S
---------	-------------------