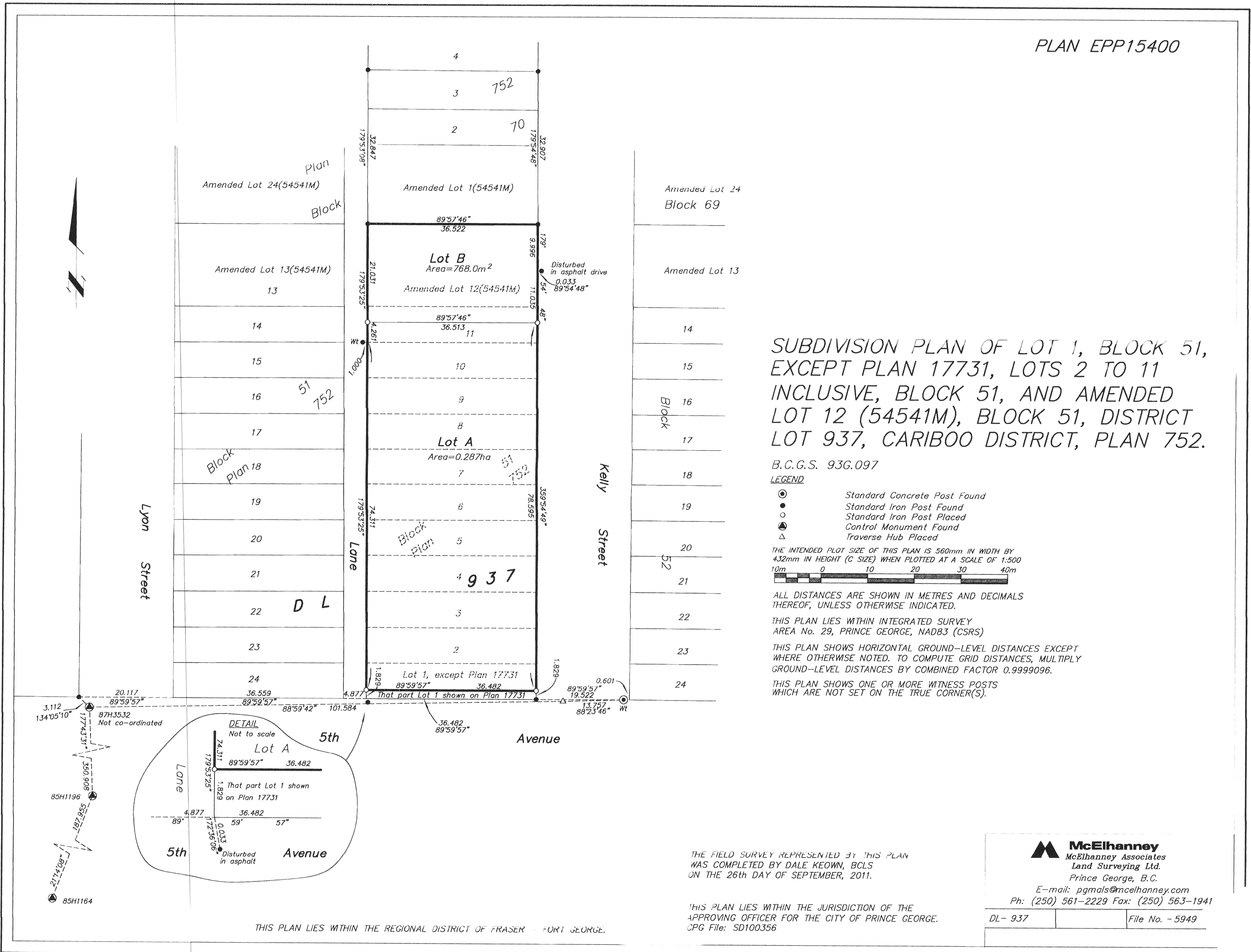


PLAN EPP15400



SUBDIVISION PLAN OF LOT 1, BLOCK 51, EXCEPT PLAN 17731, LOTS 2 TO 11 INCLUSIVE, BLOCK 51, AND AMENDED LOT 12 (54541M), BLOCK 51, DISTRICT LOT 937, CARIBOO DISTRICT, PLAN 752.

B.C.G.S. 93G.097

LEGEND

- Standard Concrete Post Found
- Standard Iron Post Found
- ◐ Standard Iron Post Placed
- ▲ Control Monument Found
- △ Traverse Hub Placed

THE INTENDED PLOT SIZE OF THIS PLAN IS 560mm IN WIDTH BY 432mm IN HEIGHT (C SIZE) WHEN PLOTTED AT A SCALE OF 1:500

10m 0 10 20 30 40m

ALL DISTANCES ARE SHOWN IN METRES AND DECIMALS THEREOF, UNLESS OTHERWISE INDICATED.

THIS PLAN LIES WITHIN INTEGRATED SURVEY AREA No. 29, PRINCE GEORGE, NAD83 (CSRS)

THIS PLAN SHOWS HORIZONTAL GROUND-LEVEL DISTANCES EXCEPT WHERE OTHERWISE NOTED. TO COMPUTE GRID DISTANCES, MULTIPLY GROUND-LEVEL DISTANCES BY COMBINED FACTOR 0.9999096.

THIS PLAN SHOWS ONE OR MORE WITNESS POSTS WHICH ARE NOT SET ON THE TRUE CORNER(S).

THE FIELD SURVEY REPRESENTED BY THIS PLAN WAS COMPLETED BY DALE KEOWN, BCLS ON THE 26th DAY OF SEPTEMBER, 2011.

THIS PLAN LIES WITHIN THE JURISDICTION OF THE APPROVING OFFICER FOR THE CITY OF PRINCE GEORGE. CPG File: SD100356

McElhanney
McElhanney Associates
Land Surveying Ltd.
Prince George, B.C.

E-mail: pgmats@mcelhanney.com
Ph: (250) 561-2229 Fax: (250) 563-1941

DL- 937 File No. - 5949

THIS PLAN LIES WITHIN THE REGIONAL DISTRICT OF FRASER - FORT GEORGE.