

# REFERENCE PLAN OF EASEMENT WITHIN LOT 1, DISTRICT LOT 1598, CARIBOO DISTRICT, PLAN PGP39090, EXCEPT PLAN EPP13965.

## PLAN EPP15108

Pursuant to Section 99(1)(e)  
of the Land Title Act.

BCGS 936.086

THE INTENDED PLOT SIZE OF THIS PLAN IS 432mm IN WIDTH BY  
560mm IN HEIGHT (C SIZE) WHEN PLOTTED AT A SCALE OF 1:1500



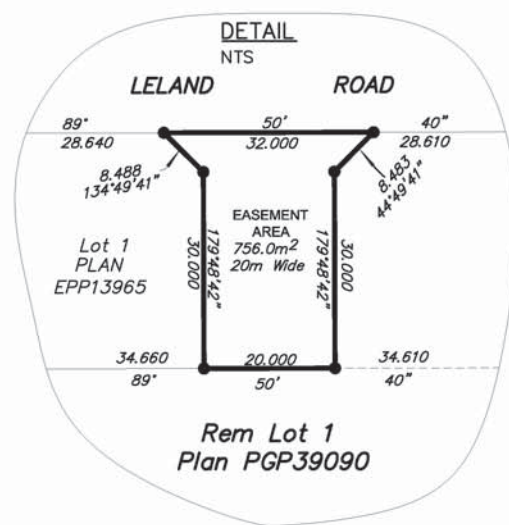
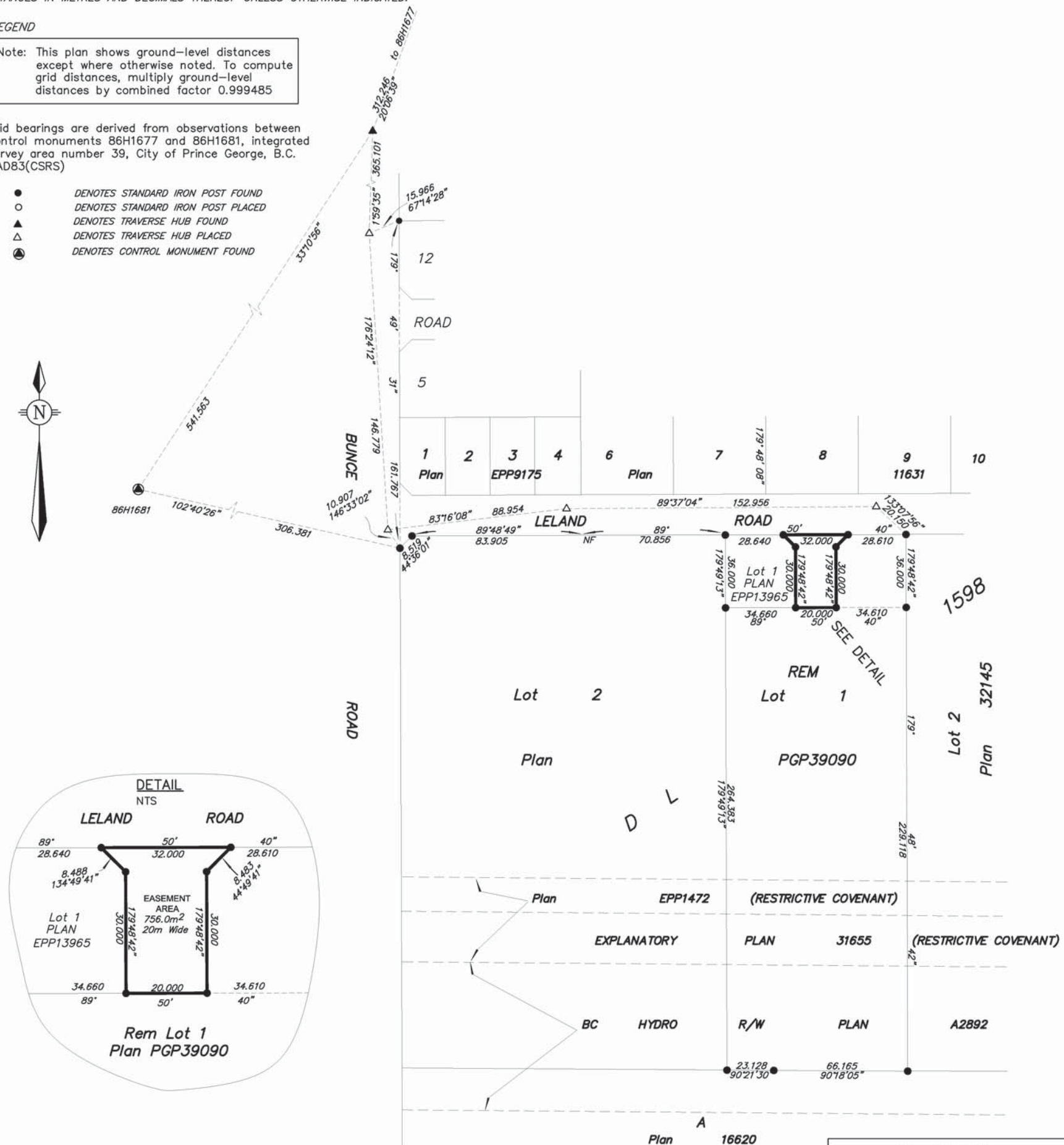
ALL LINEAR MEASUREMENTS ARE SHOWN AS HORIZONTAL GROUND-LEVEL  
DISTANCES IN METRES AND DECIMALS THEREOF UNLESS OTHERWISE INDICATED.

### LEGEND

Note: This plan shows ground-level distances  
except where otherwise noted. To compute  
grid distances, multiply ground-level  
distances by combined factor 0.999485

Grid bearings are derived from observations between  
control monuments 86H1677 and 86H1681, integrated  
survey area number 39, City of Prince George, B.C.  
NAD83(CSRS)

- DENOTES STANDARD IRON POST FOUND
- DENOTES STANDARD IRON POST PLACED
- ▲ DENOTES TRAVERSE HUB FOUND
- △ DENOTES TRAVERSE HUB PLACED
- ⊙ DENOTES CONTROL MONUMENT FOUND



THE FIELD SURVEY REPRESENTED BY THIS PLAN  
WAS COMPLETED BY DALE KEOWN, BCLS  
ON THE 30th DAY OF JUNE, 2011.

THIS PLAN LIES WITHIN THE REGIONAL DISTRICT OF FRASER - FORT GEORGE.

**McElhanney**  
McElhanney Associates  
Land Surveying Ltd.  
Prince George, B.C.  
E-mail: pgmals@mcelhanney.com  
Ph: (250) 561-2229 Fax: (250) 563-1941

DL- 1598	File No. - 5856-E
----------	-------------------