

# REFERENCE PLAN OF CONSOLIDATION OF THE EAST 1/2 OF LOT 7, LOT 8 AND LOT 9, BLOCK 155, DISTRICT LOT 343, CARIBOO DISTRICT, PLAN 1268.

PLAN EPP14971

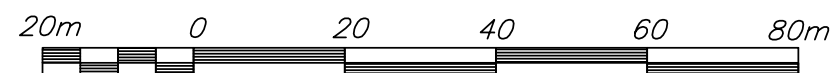
BCGS 93G.097

Pursuant to Section 100(1)(b)  
of the Land Title Act.

THIS PLAN LIES WITHIN INTEGRATED SURVEY  
AREA No. 29, PRINCE GEORGE, NAD83 (CSRS)

**LEGEND**

THE INTENDED PLOT SIZE OF THIS PLAN IS 432mm IN WIDTH BY  
560mm IN HEIGHT (C SIZE) WHEN PLOTTED AT A SCALE OF 1:1000

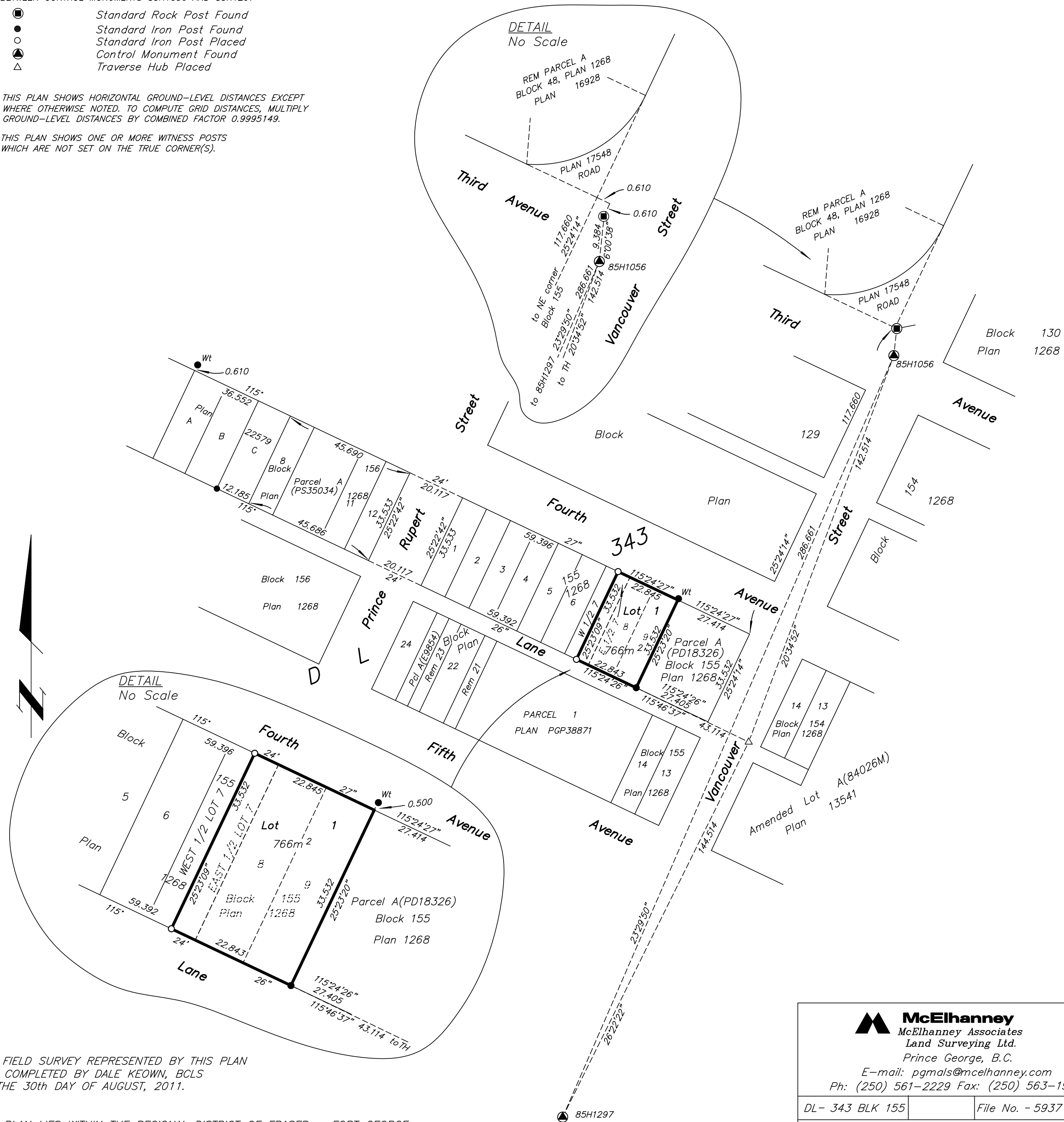


GRID BEARINGS ARE DERIVED FROM OBSERVATIONS  
BETWEEN CONTROL MONUMENTS 85H1056 AND 85H1297

- Standard Rock Post Found
- Standard Iron Post Found
- Standard Iron Post Placed
- ▲ Control Monument Found
- △ Traverse Hub Placed

THIS PLAN SHOWS HORIZONTAL GROUND-LEVEL DISTANCES EXCEPT  
WHERE OTHERWISE NOTED. TO COMPUTE GRID DISTANCES, MULTIPLY  
GROUND-LEVEL DISTANCES BY COMBINED FACTOR 0.9995149.

THIS PLAN SHOWS ONE OR MORE WITNESS POSTS  
WHICH ARE NOT SET ON THE TRUE CORNER(S).



THE FIELD SURVEY REPRESENTED BY THIS PLAN  
WAS COMPLETED BY DALE KEOWN, BCLS  
ON THE 30th DAY OF AUGUST, 2011.

THIS PLAN LIES WITHIN THE REGIONAL DISTRICT OF FRASER - FORT GEORGE.

**McElhanney**  
McElhanney Associates  
Land Surveying Ltd.  
Prince George, B.C.  
E-mail: pgmals@mcelhanney.com  
Ph: (250) 561-2229 Fax: (250) 563-1941

DL - 343 BLK 155	File No. - 5937
------------------	-----------------