

SUBDIVISION PLAN OF PART OF PARCEL A (PLAN 24734) OF THE SOUTH EAST 1/4 OF DISTRICT LOT 4046, CARIBOO DISTRICT, EXCEPT PLAN 25412 AND BCP38502.

PLAN EPP14354

BCGS 93G.097

THE INTENDED PLOT SIZE OF THIS PLAN IS 560mm IN WIDTH BY 864mm IN HEIGHT (D SIZE) WHEN PLOTTED AT A SCALE OF 1:1500



THIS PLAN LIES WITHIN INTEGRATED SURVEY AREA No. 39, CITY OF PRINCE GEORGE, NAD83 (CSRS)

GRID BEARINGS ARE DERIVED FROM OBSERVATIONS BETWEEN CONTROL MONUMENTS 86H1576 AND 86H1619.

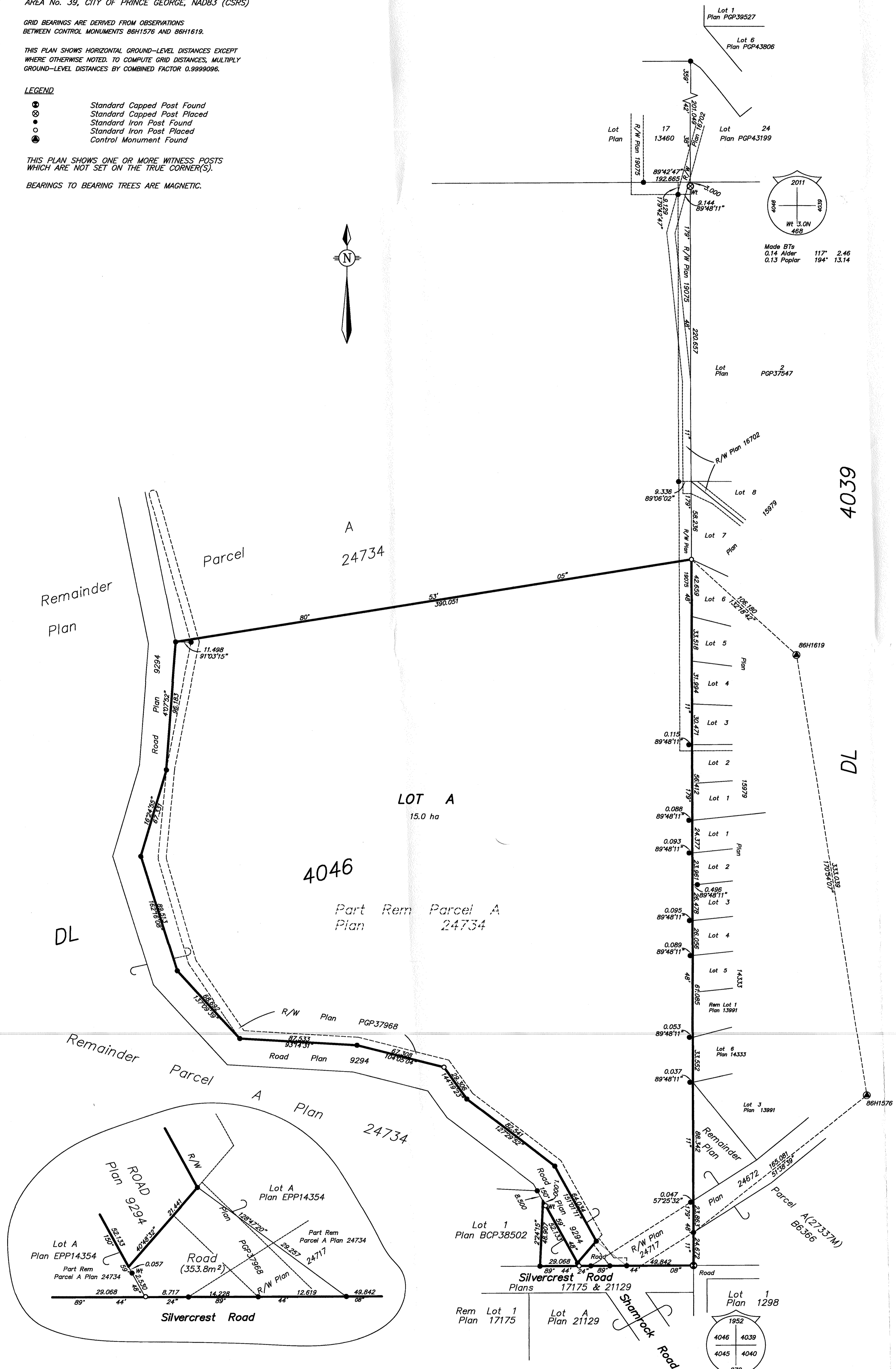
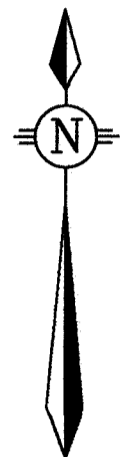
THIS PLAN SHOWS HORIZONTAL GROUND-LEVEL DISTANCES EXCEPT WHERE OTHERWISE NOTED. TO COMPUTE GRID DISTANCES, MULTIPLY GROUND-LEVEL DISTANCES BY COMBINED FACTOR 0.9999096.

LEGEND

- Standard Capped Post Found
- Standard Capped Post Placed
- Standard Iron Post Found
- Standard Iron Post Placed
- Control Monument Found

THIS PLAN SHOWS ONE OR MORE WITNESS POSTS WHICH ARE NOT SET ON THE TRUE CORNER(S).

BEARINGS TO BEARING TREES ARE MAGNETIC.



THIS PLAN LIES WITHIN THE JURISDICTION OF THE APPROVING OFFICER FOR THE CITY OF PRINCE GEORGE. CPG File: SD100353

THE FIELD SURVEY REPRESENTED BY THIS PLAN WAS COMPLETED BY DALE KEOWN, BCLS ON THE 25th DAY OF July, 2011.

THIS PLAN LIES WITHIN THE REGIONAL DISTRICT OF FRASER - FORT GEORGE.

McElhanney
 McElhanney Associates
 Land Surveying Ltd.
 Prince George, B.C.
 E-mail: pgmals@mcElhanney.com
 Ph: (250) 561-2229 Fax: (250) 563-1941

DL - 4046	SUB	File No. - 5914
Prospero File SD100319		REV JUNE 27, 2013