

**PLAN OF SUBDIVISION OF PART OF LOT 2,  
DISTRICT LOT 751, CARIBOO DISTRICT,  
PLAN BCP25635.**

**PLAN EPP14328**

BCGS 93G.087

THIS PLAN LIES WITHIN INTEGRATED SURVEY  
AREA No. 39, PRINCE GEORGE, NAD83 (CSRS)

THE INTENDED PLOT SIZE OF THIS PLAN IS 432mm IN WIDTH BY  
560mm IN HEIGHT (C SIZE) WHEN PLOTTED AT A SCALE OF 1:1500

20m 0 20 40 60 100m

ALL DISTANCES ARE SHOWN IN METRES AND  
DECIMALS THEREOF, UNLESS OTHERWISE INDICATED.

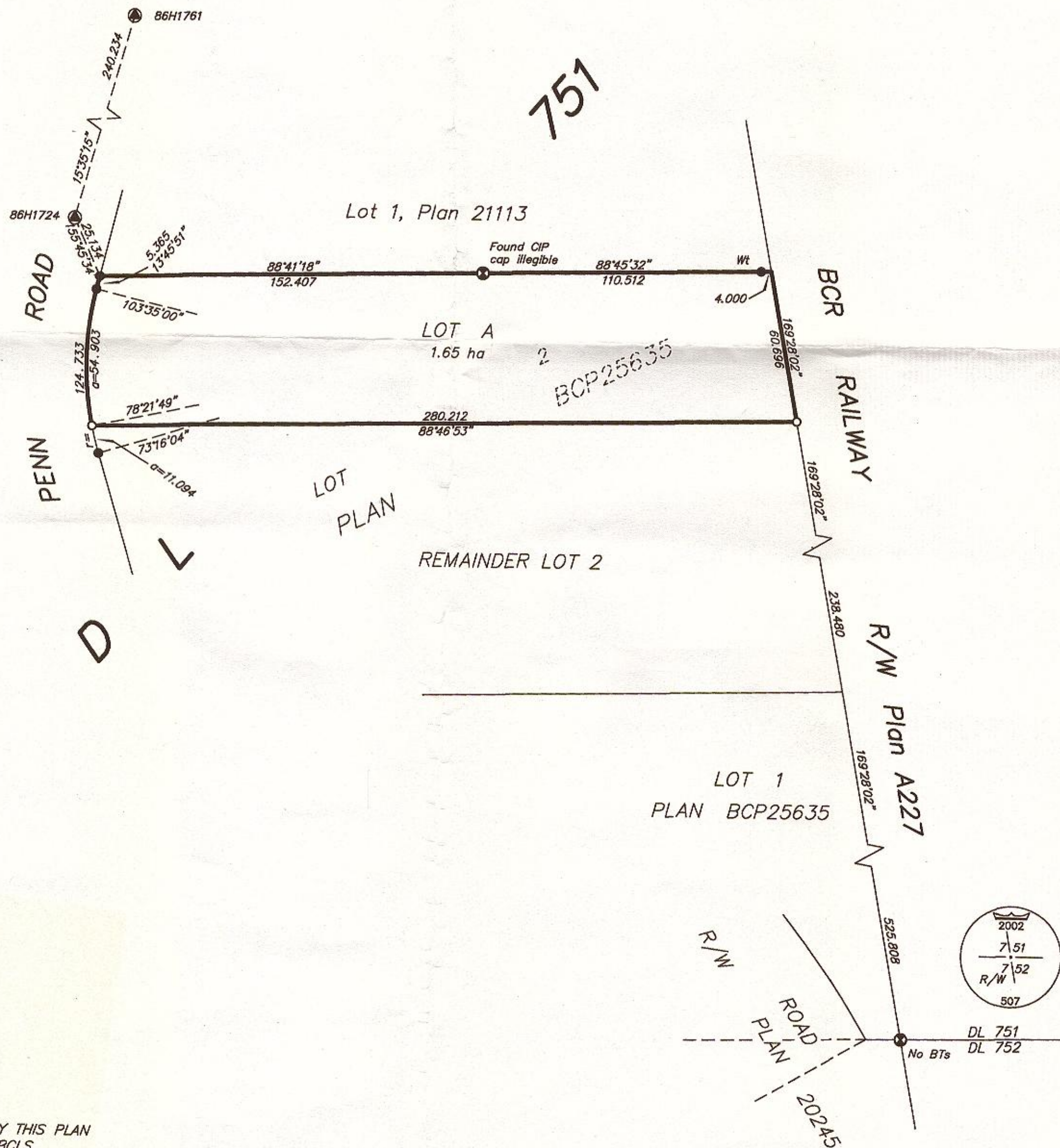
**LEGEND**

GRID BEARINGS ARE DERIVED FROM OBSERVATIONS  
BETWEEN CONTROL MONUMENTS 86H1724 AND 86H1761.

- DENOTES STANDARD CAPPED POST FOUND
- ⊙ DENOTES CONTROL MONUMENT FOUND
- DENOTES STANDARD IRON POST FOUND
- DENOTES STANDARD IRON POST PLACED

THIS PLAN SHOWS HORIZONTAL GROUND-LEVEL DISTANCES EXCEPT  
WHERE OTHERWISE NOTED. TO COMPUTE GRID DISTANCES, MULTIPLY  
GROUND-LEVEL DISTANCES BY COMBINED FACTOR 0.9995137.

THIS PLAN SHOWS ONE OR MORE WITNESS POSTS  
WHICH ARE NOT SET ON THE TRUE CORNER.



THE FIELD SURVEY REPRESENTED BY THIS PLAN  
WAS COMPLETED BY DALE KEOWN, BCLS  
ON THE 28th DAY OF OCTOBER, 2011.

THIS PLAN LIES WITHIN THE JURISDICTION OF THE  
APPROVING OFFICER FOR THE CITY OF PRINCE GEORGE.

THIS PLAN LIES WITHIN THE REGIONAL DISTRICT OF FRASER - FORT GEORGE.

**McElhanney**  
McElhanney Associates  
Land Surveying Ltd.  
Prince George, B.C.  
E-mail: pgmals@mcelhanney.com  
Ph: (250) 561-2229 Fax: (250) 563-1941

DL- 751	File No. - 5964
---------	-----------------