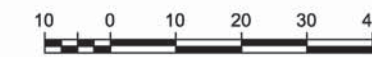


PLAN EPP14219

REFERENCE PLAN OF ROAD THROUGH PART OF LOT 1, DISTRICT LOT 343, CARIBOO DISTRICT PLAN EPP14218

BCGS 93G 097

Pursuant to Section 107 of the Land Title Act



All distances are in metres

The intended plot size of this plan is 560 mm in width by 432 mm in height when plotted at scale 1:750 (use C size sheet)

LEGEND

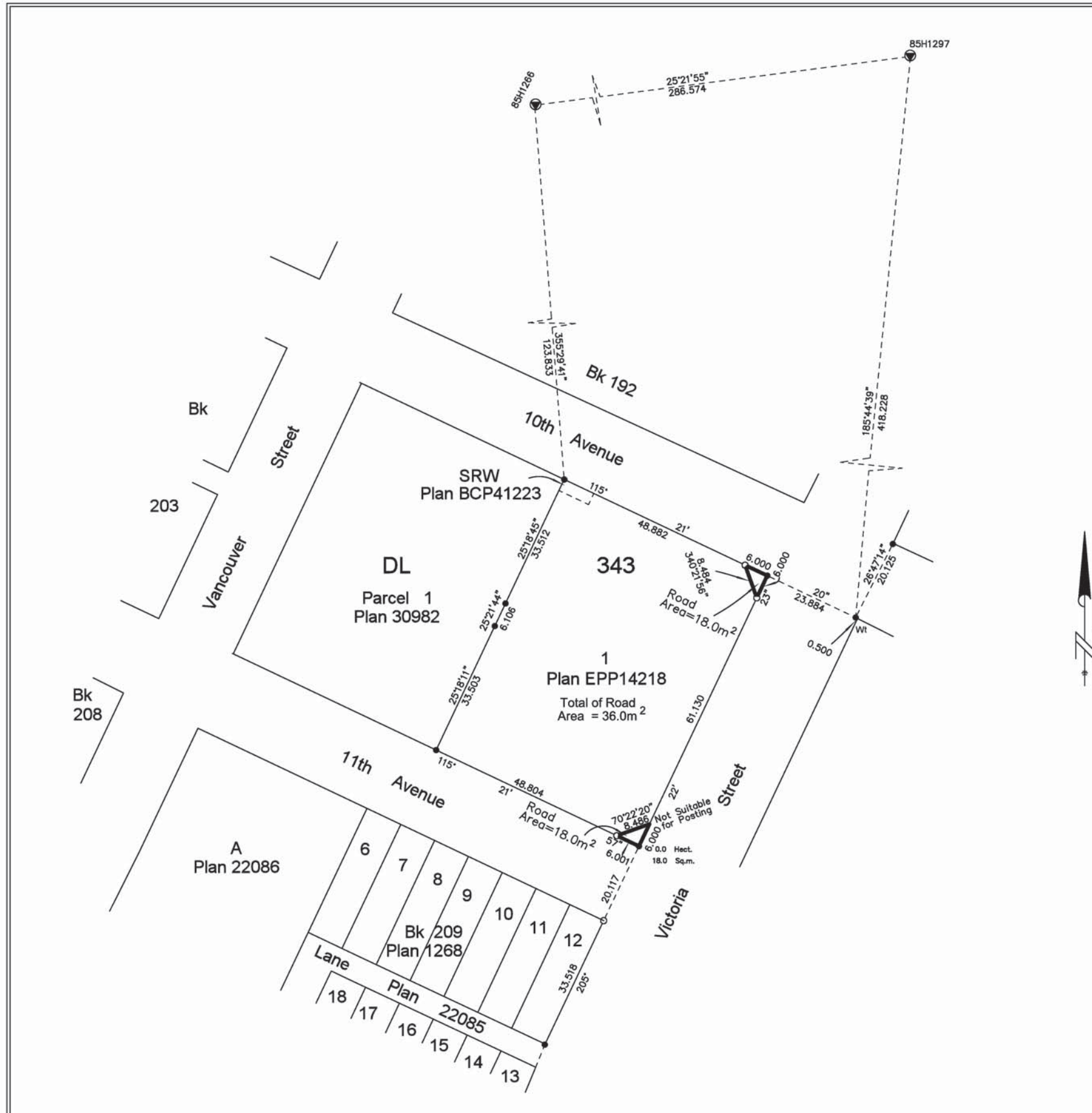
- Standard Iron Post Found
- Standard Iron Post Placed
- ⊙ Control Monument

Grid bearings are derived from observations between control monuments 85H1297 and 85H1266 Integrated Survey Area Number 39, City of Prince George.

This plan shows ground level measured distances. Prior to computation of UTM coordinates multiply by combined factor of 0.9995161

This plan lies within the Regional District of Fraser-Fort George

The field survey represented by this plan was completed by Ronald L. Kral, BCLS on the 14th day of July, 2011



R.E. GOOK & ASSOCIATES
B.C. & CANADA LAND SURVEYORS
 886 VANCOUVER STREET
 PRINCE GEORGE, B.C. V2L 2P5
 PHONE: 250-564-4242
 FAX: 250-564-5343
 FILE: 11-0698PG-2
 regook@northernsurveys.com