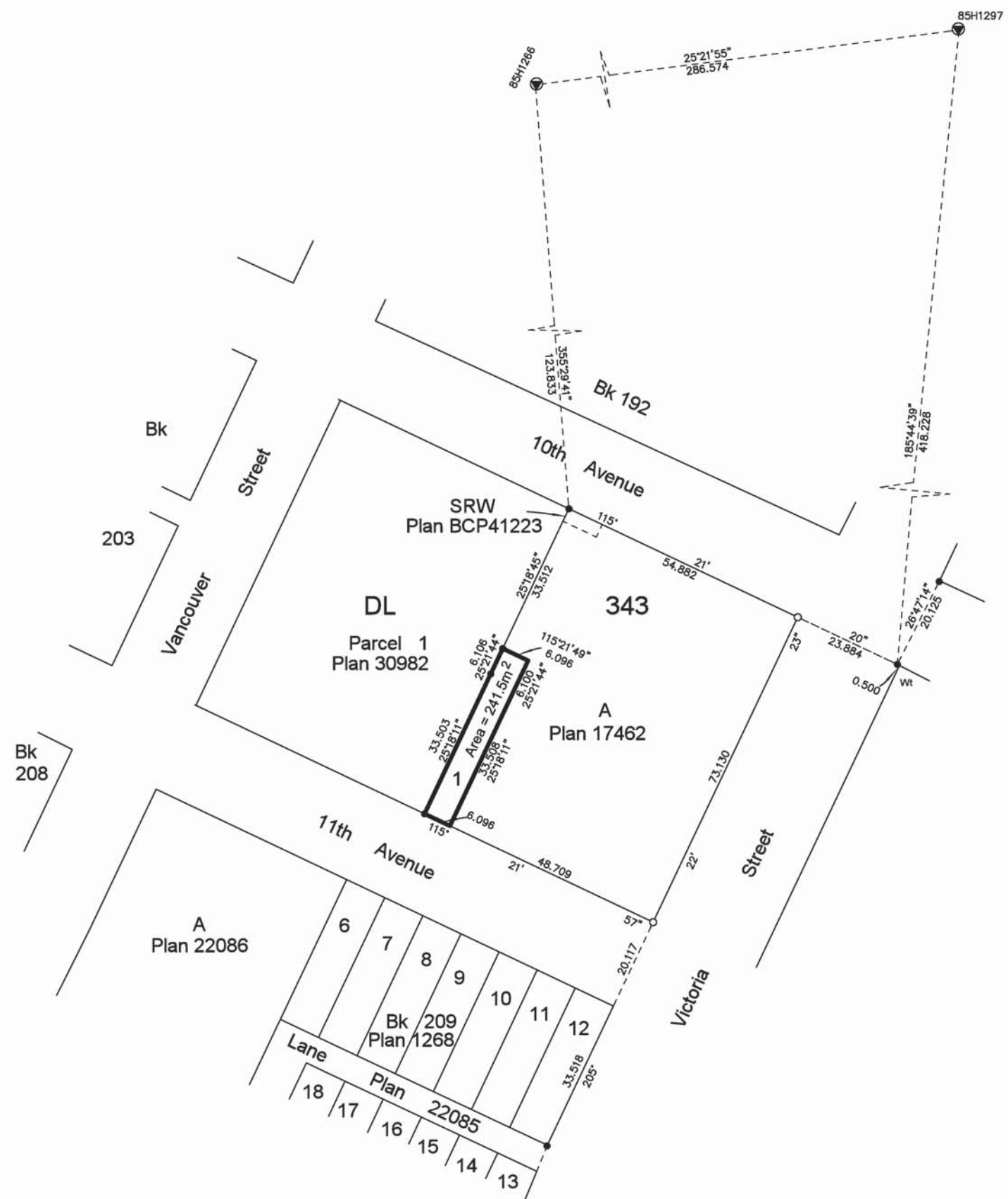


PLAN EPP14217



REFERENCE PLAN TO ACCOMPANY  
 CITY OF PRINCE GEORGE ROAD  
 CLOSURE BYLAW 8389, CLOSING  
 LANE DEDICATED BY PLAN 1268  
 AND PLAN 17348 ADJACENT TO  
 LOT A, DL 343, CARIBOO  
 DISTRICT, PLAN 17462



BCGS 93G 097

Pursuant to Section 40 of the Community Charter and Section 120 of the Land Title Act



All distances are in metres

The intended plot size of this plan is 560 mm in width by 432 mm in height when plotted at scale 1:750 (use C size sheet)

LEGEND

- Standard Iron Post Found
- Standard Iron Post Placed
- ⊙ Control Monument

Grid bearings are derived from observations between control monuments 85H1297 and 85H1266 Integrated Survey Area Number 39, City of Prince George.

This plan shows ground level measured distances. Prior to computation of UTM coordinates multiply by combined factor of 0.9995161

This plan lies within the Regional District of Fraser-Fort George

The field survey represented by this plan was completed by Ronald L. Kral, BCLS on the 14th day of July, 2011

R.E. GOOK & ASSOCIATES  
B.C. & CANADA LAND SURVEYORS

886 VANCOUVER STREET  
PRINCE GEORGE, B.C. V2L 2P5  
PHONE: 250-564-4242  
FAX: 250-564-5343  
FILE: 11-0698PG  
regook@northernsurveys.com