

**PLAN EPP14176**

Collected Nov. 8, 2013  
 BY CA3435064 Oct. 31, 2013  
 L. Blacklock per BS

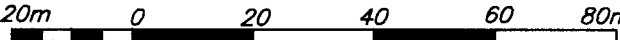
**REFERENCE PLAN OF PART OF THAT PART OF DISTRICT LOT 485, CARIBOO DISTRICT, AS SHOWN ON PLAN PGP35183.**

PURSUANT TO SECTION 47 OF THE BRITISH COLUMBIA RAILWAY ACT, CHAPTER 36, REVISED STATUTES OF 1996, AND SECTION 99 OF THE LAND TITLE ACT.

BCGS 936.087

**LEGEND**

THE INTENDED PLOT SIZE OF THIS PLAN IS 560mm IN WIDTH BY 432mm IN HEIGHT (C SIZE) WHEN PLOTTED AT A SCALE OF 1:1250

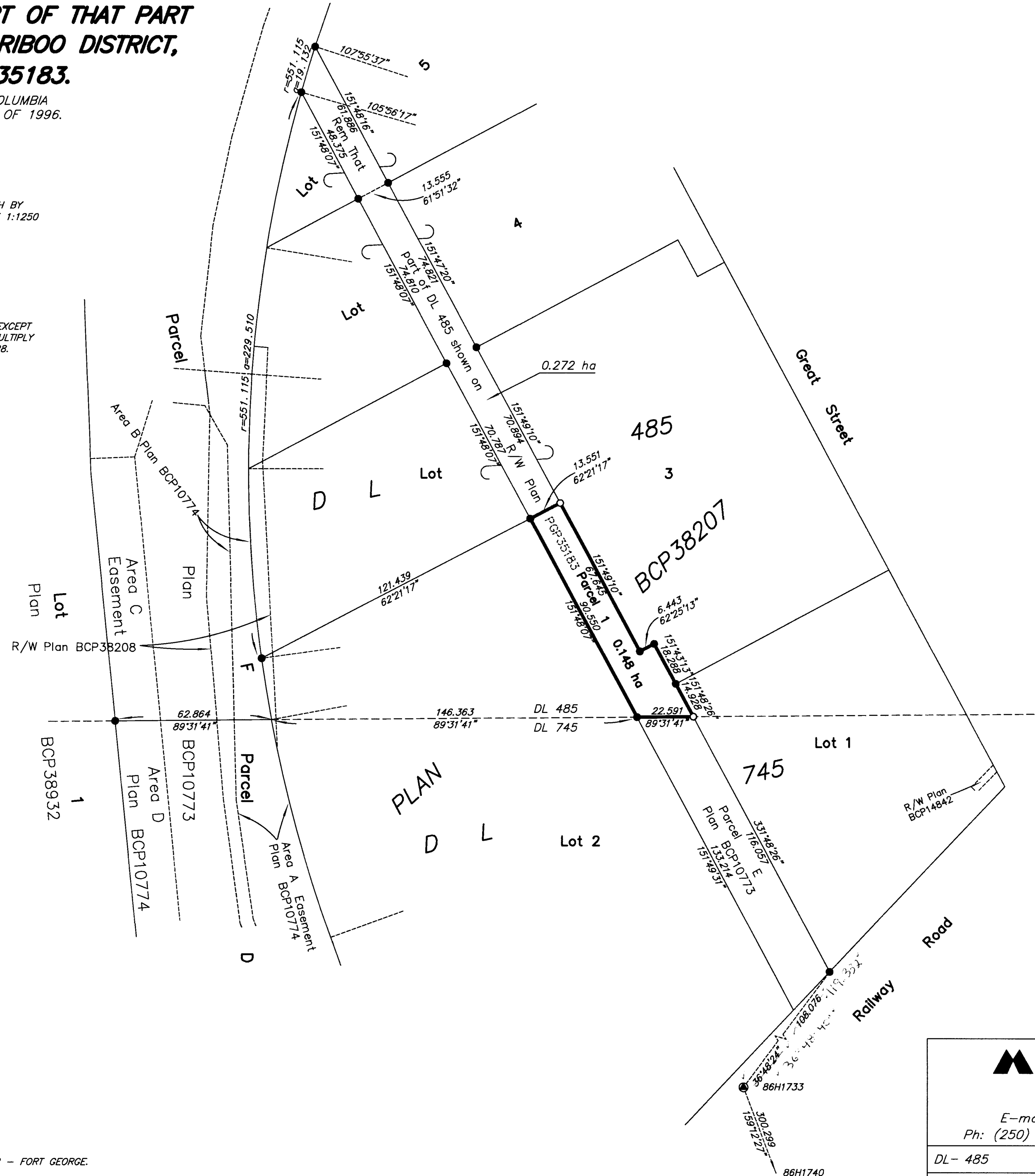


THIS PLAN LIES WITHIN INTEGRATED SURVEY AREA No. 29, PRINCE GEORGE, NAD83 (CSRS)

GRID BEARINGS ARE DERIVED FROM OBSERVATIONS BETWEEN CONTROL MONUMENTS 86H1733 AND 86H1740.

THIS PLAN SHOWS HORIZONTAL GROUND-LEVEL DISTANCES EXCEPT WHERE OTHERWISE NOTED. TO COMPUTE GRID DISTANCES, MULTIPLY GROUND-LEVEL DISTANCES BY COMBINED FACTOR 0.99995128.

- Standard Capped Post Found
- Standard Iron Post Found
- Standard Iron Post Placed
- Control Monument Found



THE FIELD SURVEY REPRESENTED BY THIS PLAN WAS COMPLETED BY DALE KEOWN, BCLS ON THE 27th DAY OF JUNE, 2011.

THIS PLAN LIES WITHIN THE REGIONAL DISTRICT OF FRASER - FORT GEORGE.

BCRP FILE #947

**McElhanney**  
 McElhanney Associates  
 Land Surveying Ltd.  
 Prince George, B.C.  
 E-mail: pgmals@mcelhanney.com  
 Ph: (250) 561-2229 Fax: (250) 563-1941

DL- 485	File No. - 5921
---------	-----------------