

# PLAN OF SUBDIVISION OF PART OF LOT 1, DISTRICT LOT 1598, CARIBOO DISTRICT, PLAN PGP39090

## PLAN EPP13965

BCGS 93G.086

THE INTENDED PLOT SIZE OF THIS PLAN IS 432mm IN WIDTH BY 560mm IN HEIGHT (C SIZE) WHEN PLOTTED AT A SCALE OF 1:1500



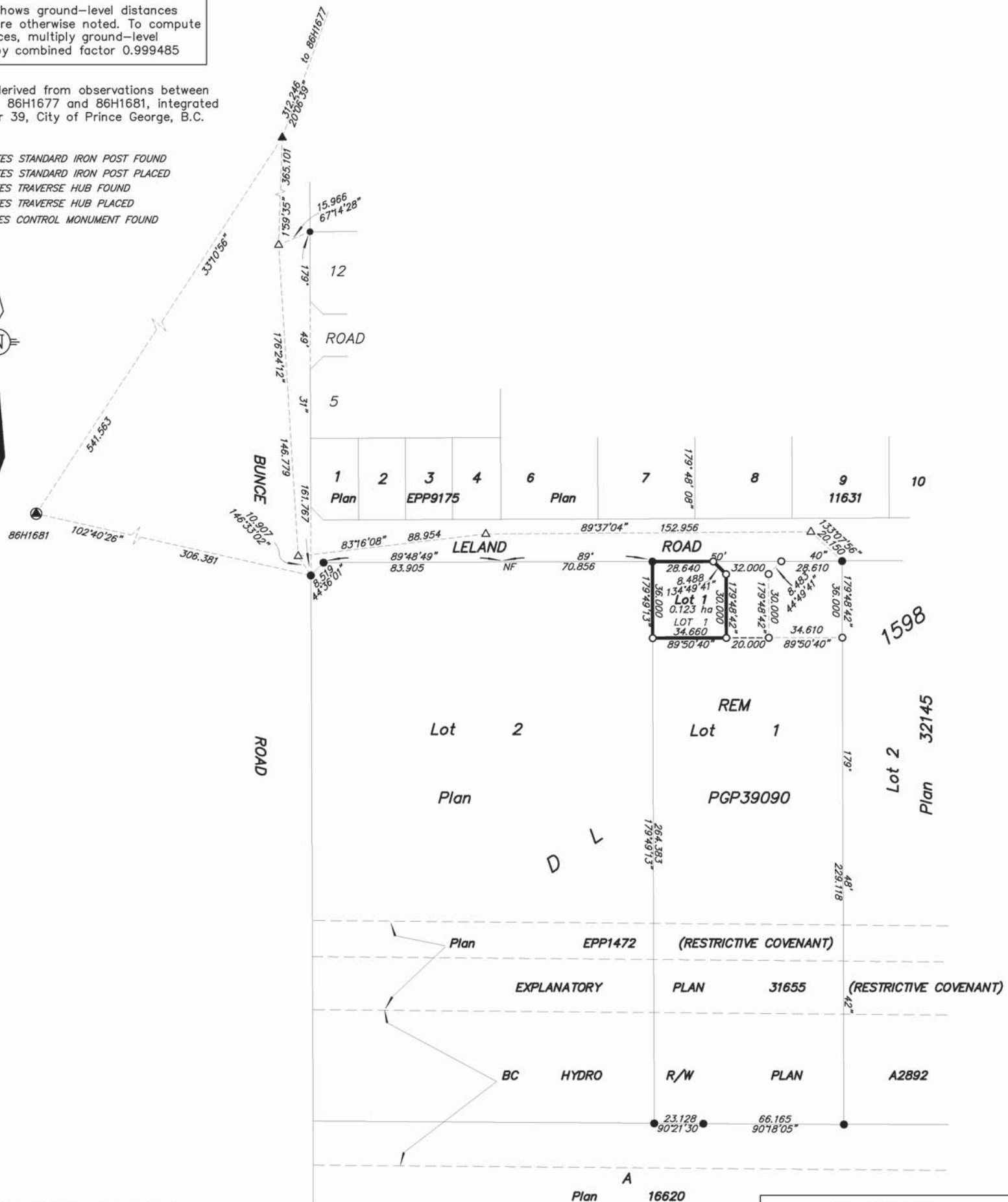
ALL LINEAR MEASUREMENTS ARE SHOWN AS HORIZONTAL GROUND-LEVEL DISTANCES IN METRES AND DECIMALS THEREOF UNLESS OTHERWISE INDICATED.

### LEGEND

Note: This plan shows ground-level distances except where otherwise noted. To compute grid distances, multiply ground-level distances by combined factor 0.999485

Grid bearings are derived from observations between control monuments 86H1677 and 86H1681, integrated survey area number 39, City of Prince George, B.C. NAD83(CSRS)

- DENOTES STANDARD IRON POST FOUND
- DENOTES STANDARD IRON POST PLACED
- ▲ DENOTES TRAVERSE HUB FOUND
- △ DENOTES TRAVERSE HUB PLACED
- ⊙ DENOTES CONTROL MONUMENT FOUND



THE FIELD SURVEY REPRESENTED BY THIS PLAN WAS COMPLETED BY DALE KEOWN, BCLS ON THE 30th DAY OF JUNE, 2011.

THIS PLAN LIES WITHIN THE JURISDICTION OF THE APPROVING OFFICER FOR THE CITY OF PRINCE GEORGE. CPG File: SD100339

THIS PLAN LIES WITHIN THE REGIONAL DISTRICT OF FRASER - FORT GEORGE.

**McElhanney**  
 McElhanney Associates  
 Land Surveying Ltd.  
 Prince George, B.C.  
 E-mail: pgmals@mcelhanney.com  
 Ph: (250) 561-2229 Fax: (250) 563-1941

|          |                   |
|----------|-------------------|
| DL- 1598 | File No. - 5856-S |
|----------|-------------------|