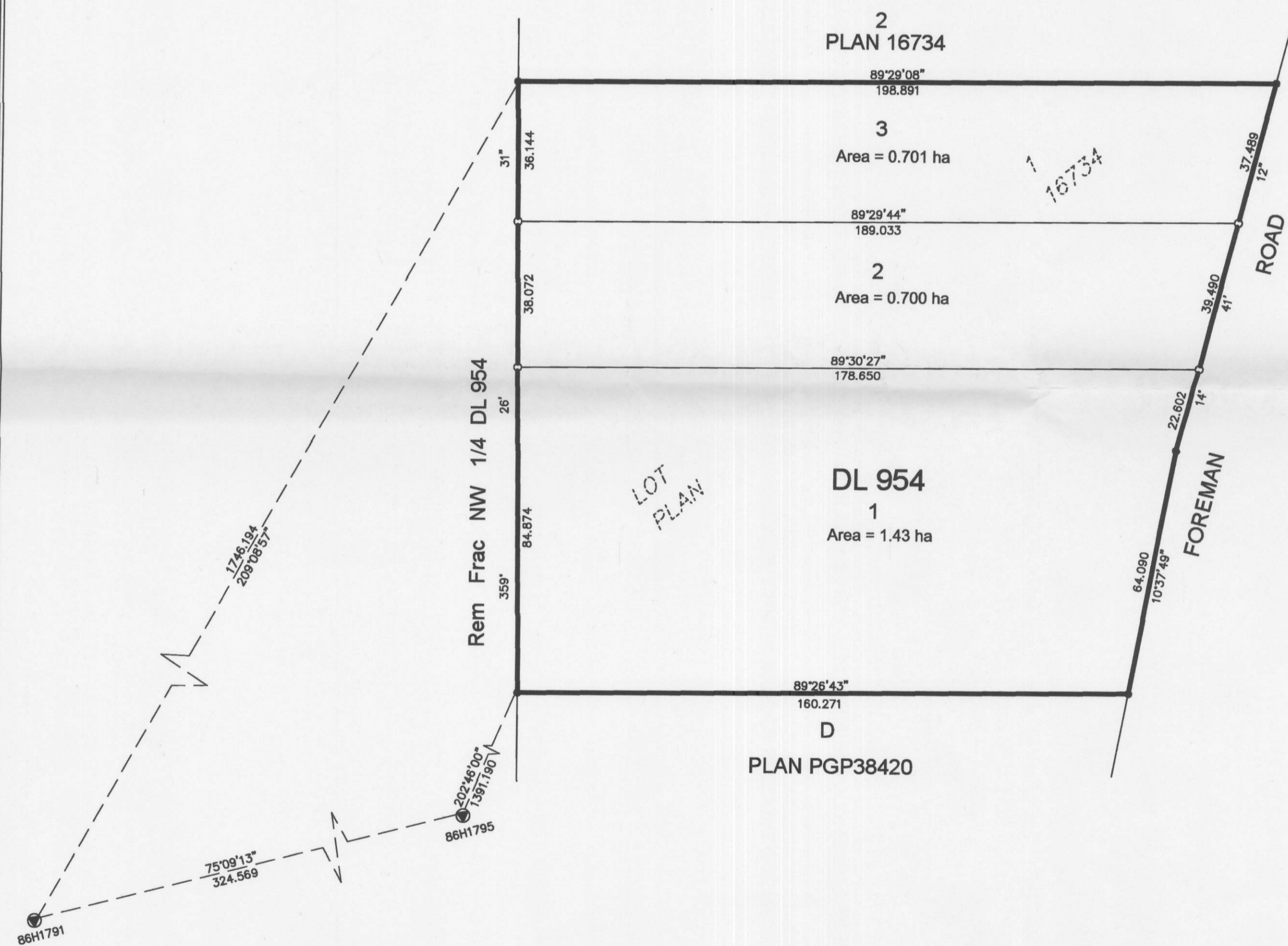
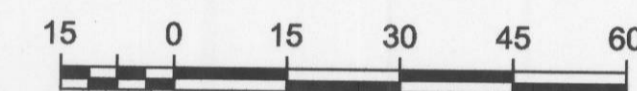


PLAN EPP13900



SUBDIVISION PLAN OF LOT 1,
DISTRICT LOT 954, CARIBOO
DISTRICT, PLAN 16734

BCGS 93G 097



All distances are in metres

The intended plot size of this plan is 560 mm in width
by 432 mm in height when plotted at scale 1:1000
(use C size sheet)



LEGEND

- Standard Iron Post Placed
- Standard Iron Post Found
- ⊙ Control Monument

Grid bearings are derived from observations between control monuments 86H1791 and 86H1795 Integrated Survey Area Number 39, City of Prince George.

This plan shows ground level measured distances.
Prior to computation of UTM coordinates
multiply by combined factor of 0.9995027

This plan lies within the Regional District of Fraser-Fort George

The field survey represented by this plan
was completed by Ronald L. Kral, BCLS
on the 28th day of June, 2011

R.E. GOOK & ASSOCIATES
B.C. & CANADA LAND SURVEYORS

886 VANCOUVER STREET
PRINCE GEORGE, B.C. V2L 2P5
PHONE: 250-564-4242
FAX: 250-564-5343
FILE: 11-0693PG
regook@northern-surveys.com

This plan lies within the jurisdiction of the
Approving Officer for the City of Prince George
File No. SD100330