

PLAN EPP13663

SUBDIVISION PLAN OF LOT 16,
DISTRICT LOT 4047, CARIBOO
DISTRICT, PLAN 17497
BCGS 93G 097



All distances are in metres

The intended plot size of this plan is 560 mm in width
by 432 mm in height when plotted at scale 1:750
(use C size sheet)

LEGEND

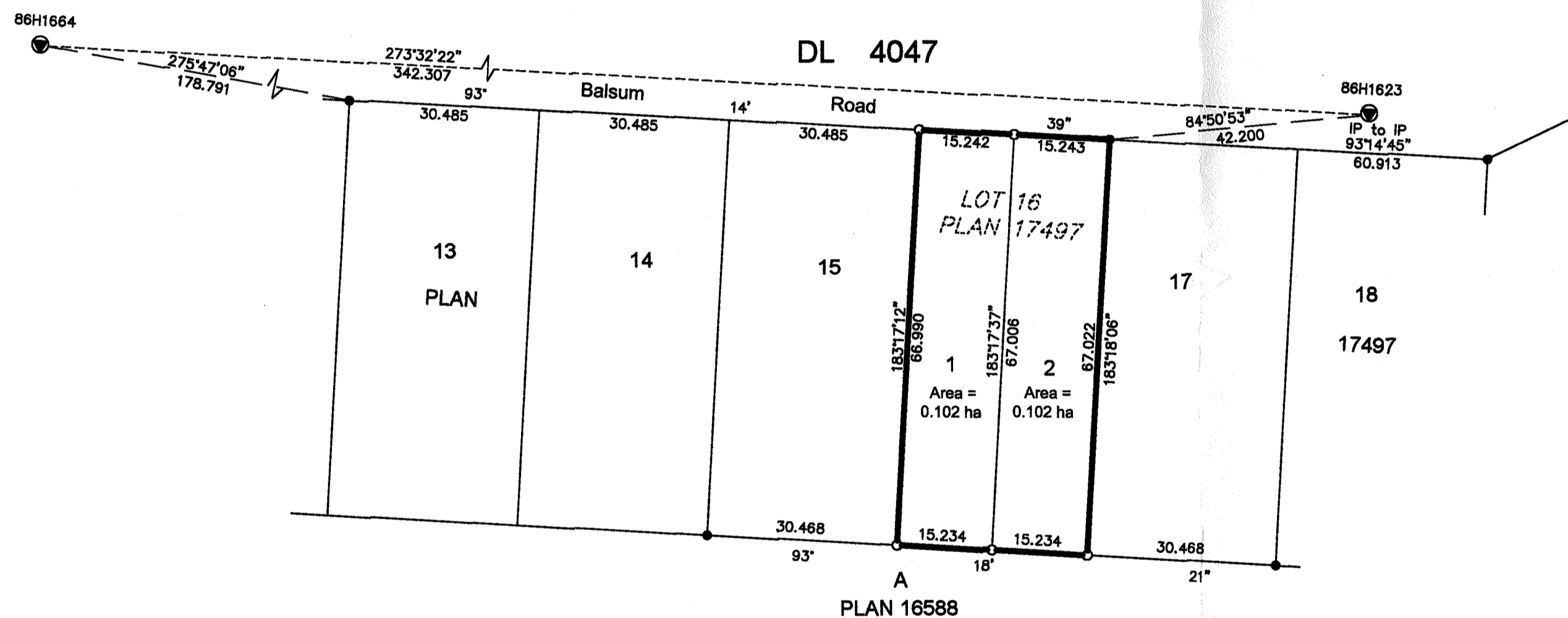
- Denotes Standard Iron Post Placed
- Denotes Standard Iron Post Found
- ⊙ Denotes Integrated Survey Area Control Monument

Grid bearings are derived from observations between control
monuments 86H1664 and 86H1623 Integrated Survey Area
Number 39, City of Prince George.

This plan shows ground level measured distances.
Prior to computation of UTM coordinates
multiply by combined factor of 0.9994893

This plan lies within the Regional District of Fraser - Fort George

The field survey represented by this plan
was completed by Ronald L. Kral, BCLS
on the 5th day of July, 2011



R.E. GOOK & ASSOCIATES
B.C. & CANADA LAND SURVEYORS
886 VANCOUVER STREET
PRINCE GEORGE, BC V2K 2P9
PHONE:250-992-2424
FAX:250-992-3434
FILE:11-0691PG
regook@northernsurveys.com

This plan lies within the jurisdiction of the Approving
Officer for the City of Prince George
File # SD100338