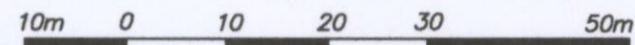


PLAN EPP13367

**PLAN OF STATUTORY RIGHT OF WAY WITHIN
PARCEL 1, DISTRICT LOT 747, CARIBOO DISTRICT,
PLAN PGP36282 EXCEPT PLAN BCP38932.
PURSUANT TO SECTION 113 OF THE LAND TITLE ACT.
BCGS 93G.087**

THE INTENDED PLOT SIZE OF THIS PLAN IS 560mm IN WIDTH BY
432mm IN HEIGHT (C SIZE) WHEN PLOTTED AT A SCALE OF 1:750



ALL DISTANCES ARE SHOWN IN METRES AND
DECIMALS THEREOF, UNLESS OTHERWISE INDICATED.

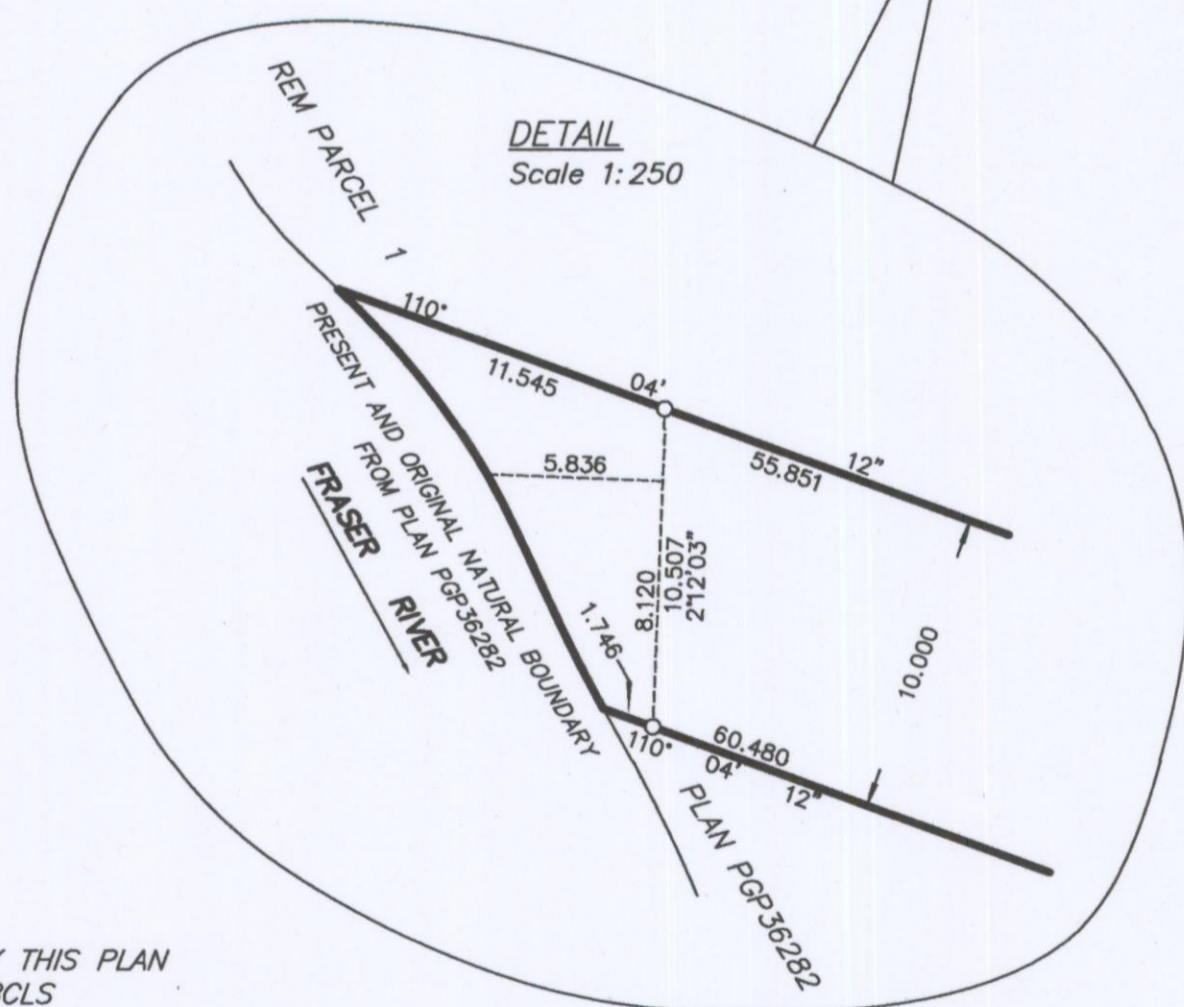
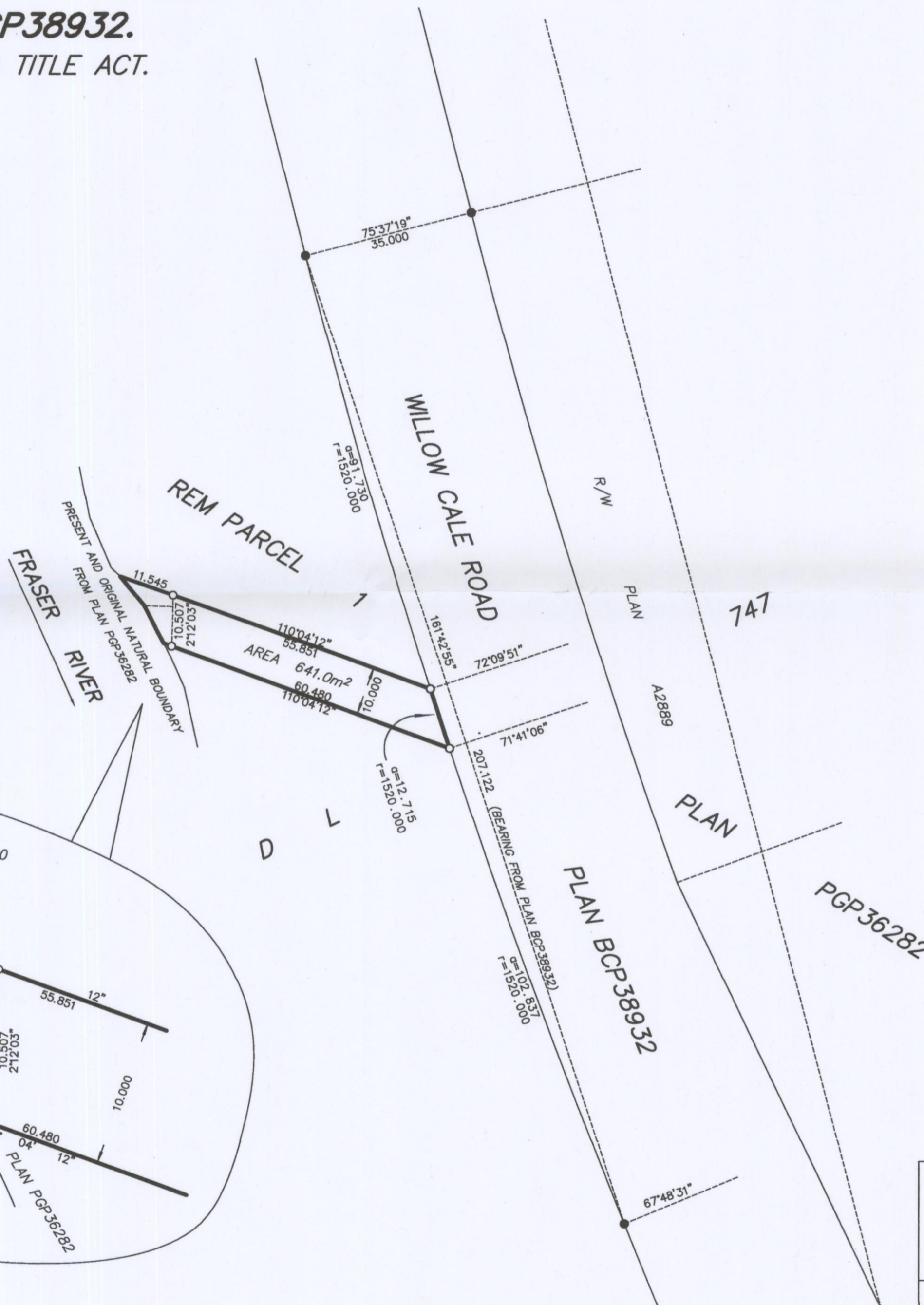
THIS PLAN LIES WITHIN INTEGRATED SURVEY
AREA No. 29, PRINCE GEORGE, NAD83 (CSRS)

LEGEND

- DENOTES STANDARD IRON POST FOUND
- DENOTES STANDARD IRON POST PLACED

GRID BEARINGS ARE DERIVED FROM PREVIOUSLY
INTEGRATED PLAN BCP38932


THIS PLAN SHOWS HORIZONTAL GROUND-LEVEL DISTANCES
EXCEPT WHERE OTHERWISE NOTED. TO COMPUTE GRID
DISTANCES MULTIPLY GROUND-LEVEL DISTANCES BY
THE COMBINED FACTOR 0.9995131.



THE FIELD SURVEY REPRESENTED BY THIS PLAN
WAS COMPLETED BY DALE KEOWN, BCLS
ON THE 10th DAY OF JUNE, 2011.

THIS PLAN LIES WITHIN THE REGIONAL DISTRICT OF FRASER - FORT GEORGE.

BCR File #921Q

 McElhanney McElhanney Associates Land Surveying Ltd. Prince George, B.C. E-mail: pgmals@mcelhanney.com Ph: (250) 561-2229 Fax: (250) 563-1941	
DL- 747	File No. - 5911