

SUBDIVISION PLAN OF PART OF LOT A, DL 1433, CARIBOO DISTRICT, PLAN 16491, EXCEPT PLAN 27754.

PLAN EPP13191

BCGS 93G.087

THIS PLAN LIES WITHIN INTEGRATED SURVEY
AREA No. 39, PRINCE GEORGE, NADB3 (CSRS).

THE INTENDED PLOT SIZE OF THIS PLAN IS 864mm IN WIDTH BY
560mm IN HEIGHT (D SIZE) WHEN PLOTTED AT A SCALE OF 1:1250



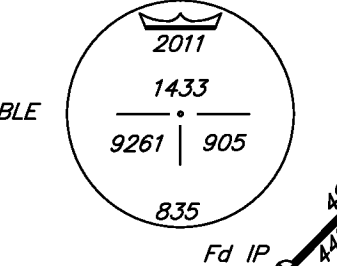
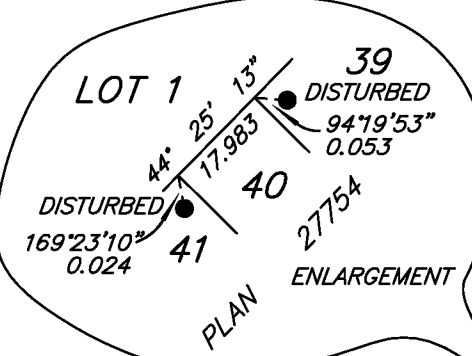
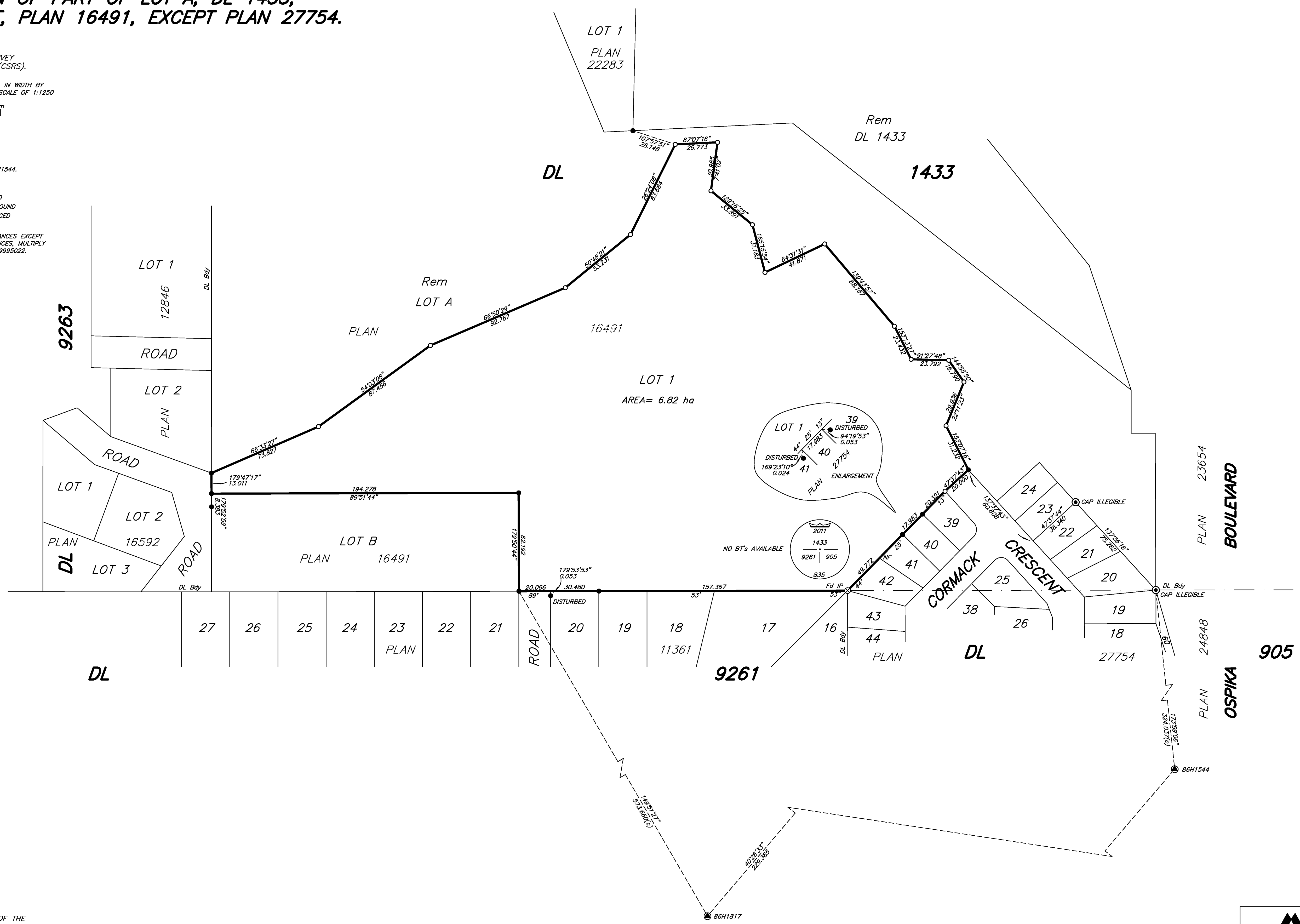
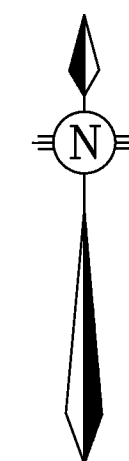
ALL DISTANCES ARE SHOWN IN METRES AND
DECIMALS THEREOF, UNLESS OTHERWISE INDICATED.

LEGEND

GRID BEARINGS ARE DERIVED FROM OBSERVATIONS
BETWEEN CONTROL MONUMENTS 86H1817 AND 86H1544.

- DENOTES CONTROL MONUMENT FOUND
- DENOTES STANDARD IRON POST FOUND
- DENOTES STANDARD IRON POST PLACED
- ⊙ DENOTES STANDARD CONCRETE POST FOUND
- ⊗ DENOTES STANDARD CAPPED POST PLACED

THIS PLAN SHOWS HORIZONTAL GROUND-LEVEL DISTANCES EXCEPT
WHERE OTHERWISE NOTED. TO COMPUTE GRID DISTANCES, MULTIPLY
GROUND-LEVEL DISTANCES BY COMBINED FACTOR 0.9995022.



THIS PLAN LIES WITHIN THE JURISDICTION OF THE
APPROVING OFFICER FOR THE CITY OF PRINCE GEORGE.
CPG FILE: SD100337

THE FIELD SURVEY REPRESENTED BY THIS PLAN
WAS COMPLETED BY DAVID E. STORBACK, B.C.S., CLS
ON THE 16th DAY OF MAY, 2011.

THIS PLAN LIES WITHIN THE REGIONAL DISTRICT OF FRASER - FORT GEORGE.

McElhanney
McElhanney Associates
Land Surveying Ltd.
Prince George, B.C.

E-mail: pgmals@mcElhanney.com
Ph: (250) 561-2229 Fax: (250) 563-1941

DL- 1433 File No. - 5862-S

CPG FILE: SD100337