

PLAN EPP13168

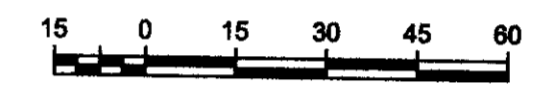
Rem LOT
PLAN
DL

4
17413
2425

1
Area = 5.90 ha

A
PGP39220

SUBDIVISION PLAN OF PART OF
LOT 4, DISTRICT LOT 2425,
CARIBOO DISTRICT, PLAN 17413,
EXCEPT PLAN PGP39220
BCGS 93J 006



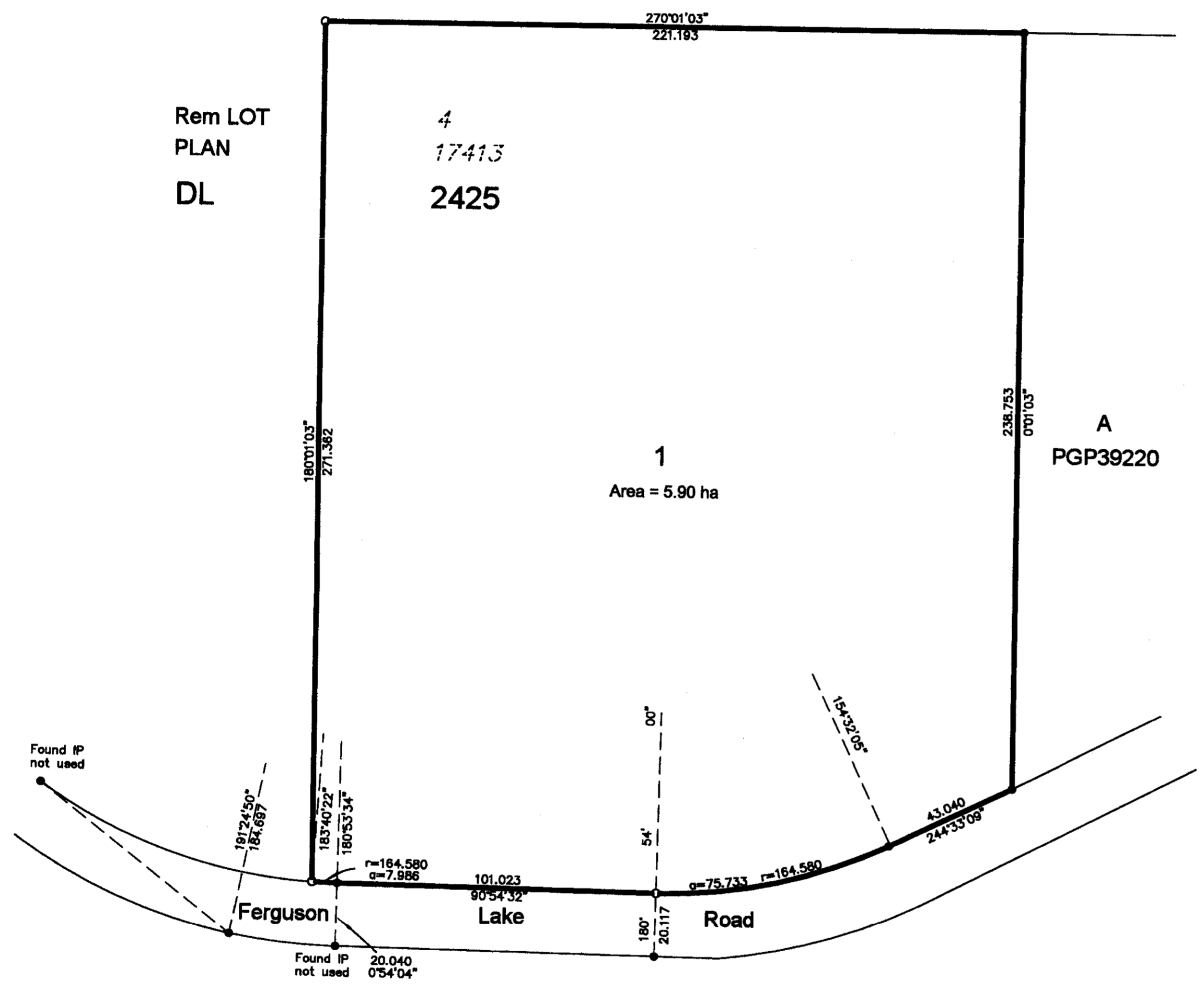
All distances are in metres

The intended plot size of this plan is 560 mm in width
by 432 mm in height when plotted at scale 1:1250
(use C size sheet)



LEGEND

- Bearings are astronomic derived from Plan PGP39220 (0°01'03")
- Standard Iron Post Placed
- Standard Iron Post Found



This plan lies within the jurisdiction of the Approving Officer for the City of Prince George File # SD100352

R.E. GOOK & ASSOCIATES
B.C. & CANADA LAND SURVEYORS
 886 VANCOUVER STREET
 PRINCE GEORGE, B.C. V2L 2P5
 PHONE: 250-564-4242
 FAX: 250-564-5343
 FILE: 11-0685PG
 regook@northern-surveys.com

This plan lies within the Fraser-Fort George Regional District

The field survey represented by this plan was completed by Ronald L. Kral, BCLS on the 1st day of June, 2011