

EXPLANATORY PLAN OF EASEMENT OVER PARTS OF LOTS 1 AND 2, DL 2003, CARIBOO DISTRICT, PLAN EPP12463.

PLAN EPP12464

BCGS 93G.087

PURSUANT TO SECTION 99(1)(e) OF THE LAND TITLE ACT.

THIS PLAN LIES WITHIN INTEGRATED SURVEY AREA No. 39, PRINCE GEORGE, NAD83 (CSRS).

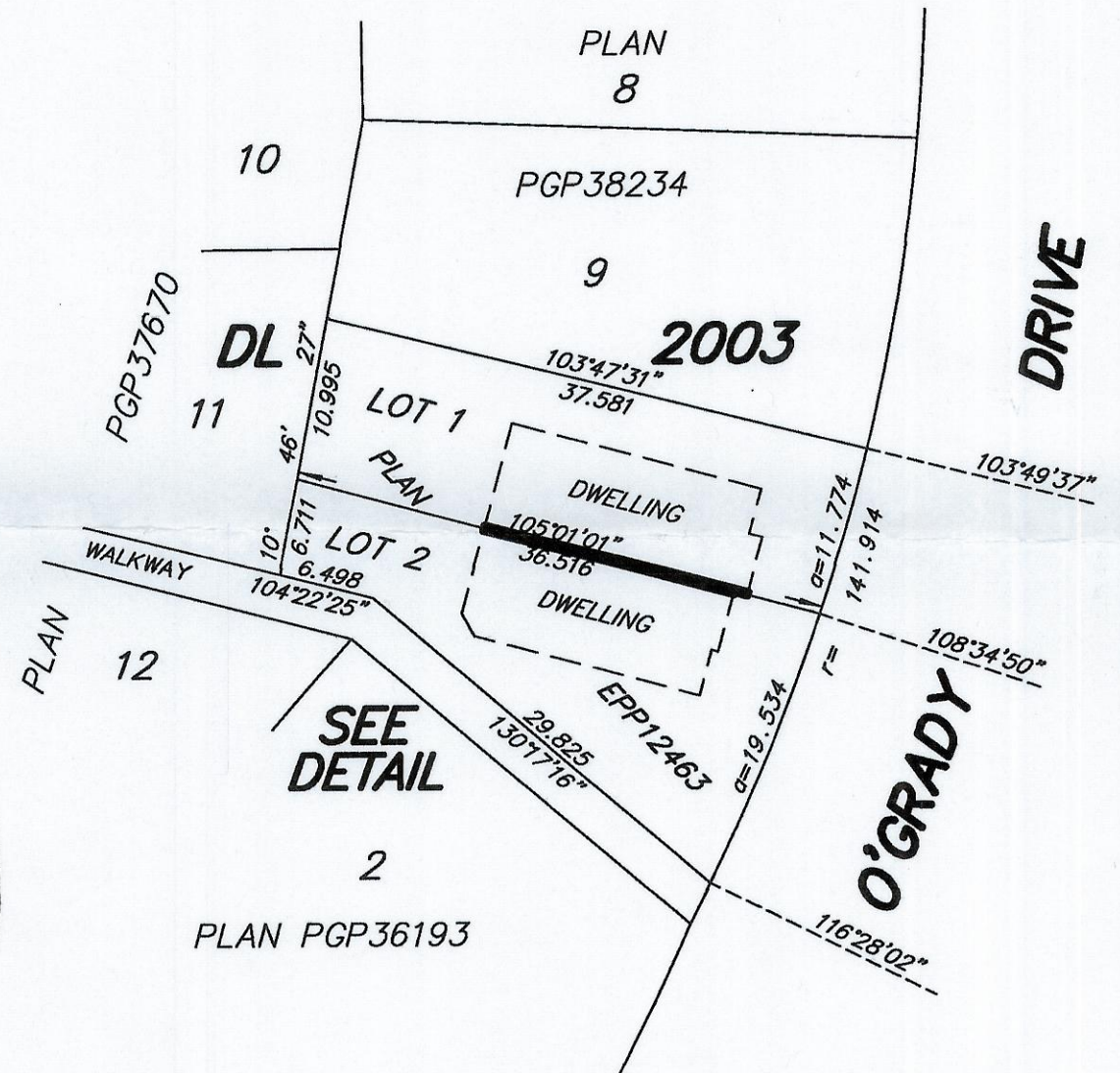
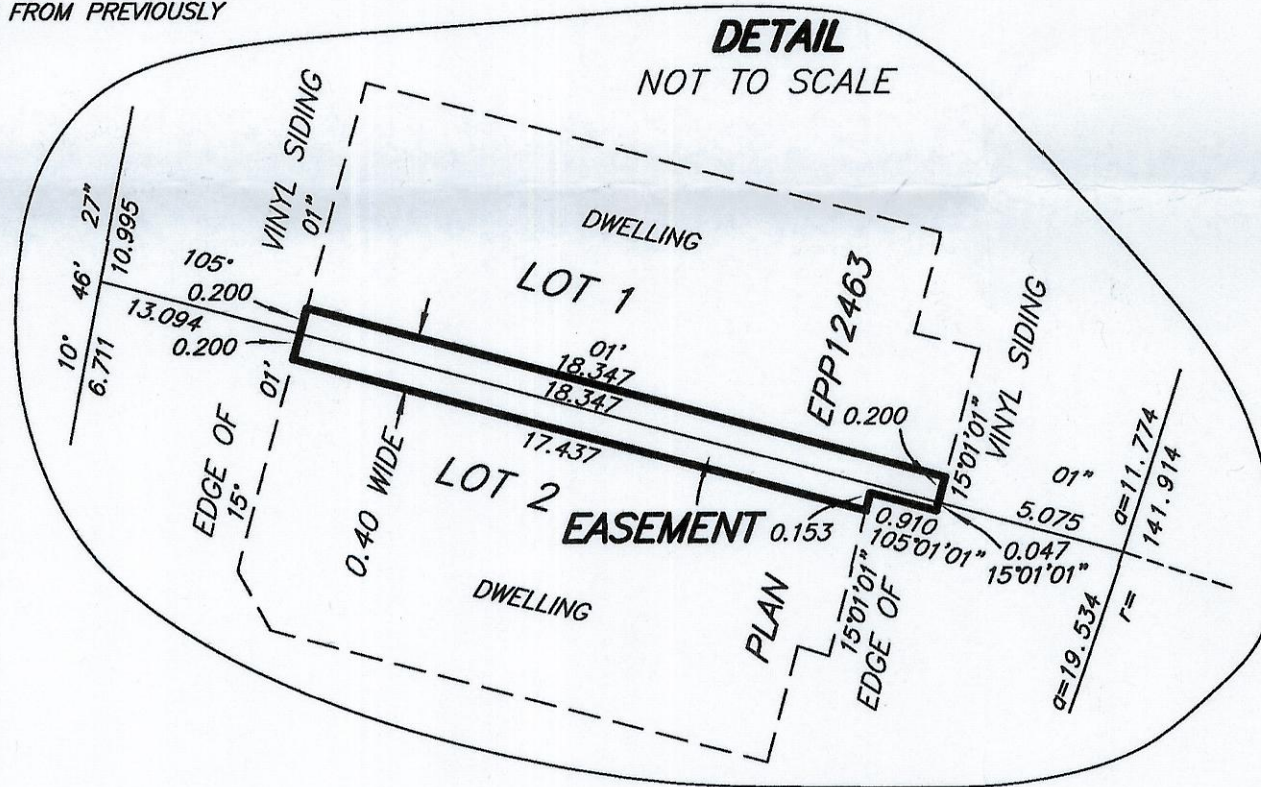
THE INTENDED PLOT SIZE OF THIS PLAN IS 432mm IN WIDTH BY 280mm IN HEIGHT (B SIZE) WHEN PLOTTED AT A SCALE OF 1:500



ALL DISTANCES ARE GROUND-LEVEL AND SHOWN IN METRES AND DECIMALS THEREOF, UNLESS OTHERWISE INDICATED.

LEGEND

GRID BEARINGS ARE DERIVED FROM PREVIOUSLY INTEGRATED PLAN EPP12463.



BOOK OF REFERENCE	
DESCRIPTION	AREA
LOT 1, DL 2003, CARIBOO DISTRICT, PLAN EPP12463	3.7m ²
LOT 2, DL 2003, CARIBOO DISTRICT, PLAN EPP12463	3.5m ²
TOTAL	7.2m²

THIS PLAN IS BASED ON THE FOLLOWING LAND TITLE AND SURVEY AUTHORITY OF BC RECORDS: EPP12463 DAVID E. STORBACK, BCLS, CLS

THIS PLAN LIES WITHIN THE REGIONAL DISTRICT OF FRASER - FORT GEORGE.

McElhanney
 McElhanney Associates
 Land Surveying Ltd.
 Prince George, B.C.

E-mail: pgmals@mcelhanney.com
 Ph: (250) 561-2229 Fax: (250) 563-1941

DL - 2003

FILE No. - 5891-PW