

SUBDIVISION PLAN OF LOT 10, DISTRICT LOT 2003, CARIBOO DISTRICT, PLAN PGP38234.

PLAN EPP12463

BCGS 93G.087

THIS PLAN LIES WITHIN INTEGRATED SURVEY
AREA No. 39, PRINCE GEORGE, NAD83 (CSRS).

THE INTENDED PLOT SIZE OF THIS PLAN IS 432mm IN WIDTH BY
560mm IN HEIGHT (C SIZE) WHEN PLOTTED AT A SCALE OF 1:500



ALL DISTANCES ARE SHOWN IN METRES AND DECIMALS
THEREOF, UNLESS OTHERWISE INDICATED.

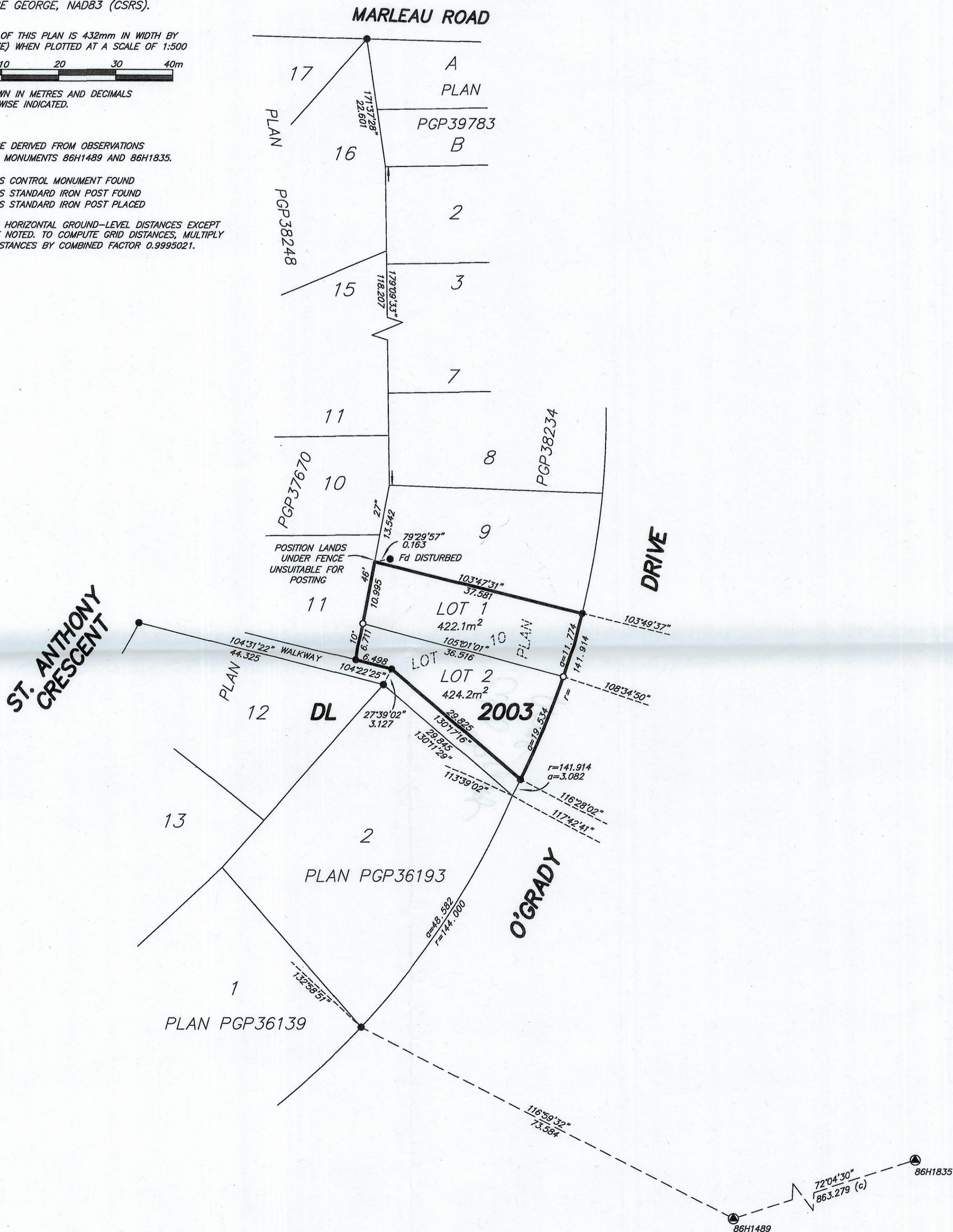
LEGEND

GRID BEARINGS ARE DERIVED FROM OBSERVATIONS
BETWEEN CONTROL MONUMENTS 86H1489 AND 86H1835.



- DENOTES CONTROL MONUMENT FOUND
- DENOTES STANDARD IRON POST FOUND
- DENOTES STANDARD IRON POST PLACED

THIS PLAN SHOWS HORIZONTAL GROUND-LEVEL DISTANCES EXCEPT
WHERE OTHERWISE NOTED. TO COMPUTE GRID DISTANCES, MULTIPLY
GROUND-LEVEL DISTANCES BY COMBINED FACTOR 0.9995021.



THIS PLAN LIES WITHIN THE JURISDICTION OF THE
APPROVING OFFICER FOR THE CITY OF PRINCE GEORGE.
CPG FILE # SD100340

THE FIELD SURVEY REPRESENTED BY THIS PLAN
WAS COMPLETED BY DAVID E. STORBACK, BCLS, CLS
ON THE 14th DAY OF APRIL, 2011.

THIS PLAN LIES WITHIN THE REGIONAL DISTRICT OF FRASER - FORT GEORGE.



McElhanney

McElhanney Associates
Land Surveying Ltd.

Prince George, B.C.

Email: pgm@mcElhanney.com

Ph: (250) 561-2229 Fax: (250) 563-1941

DL 2003

DWG

5891-S