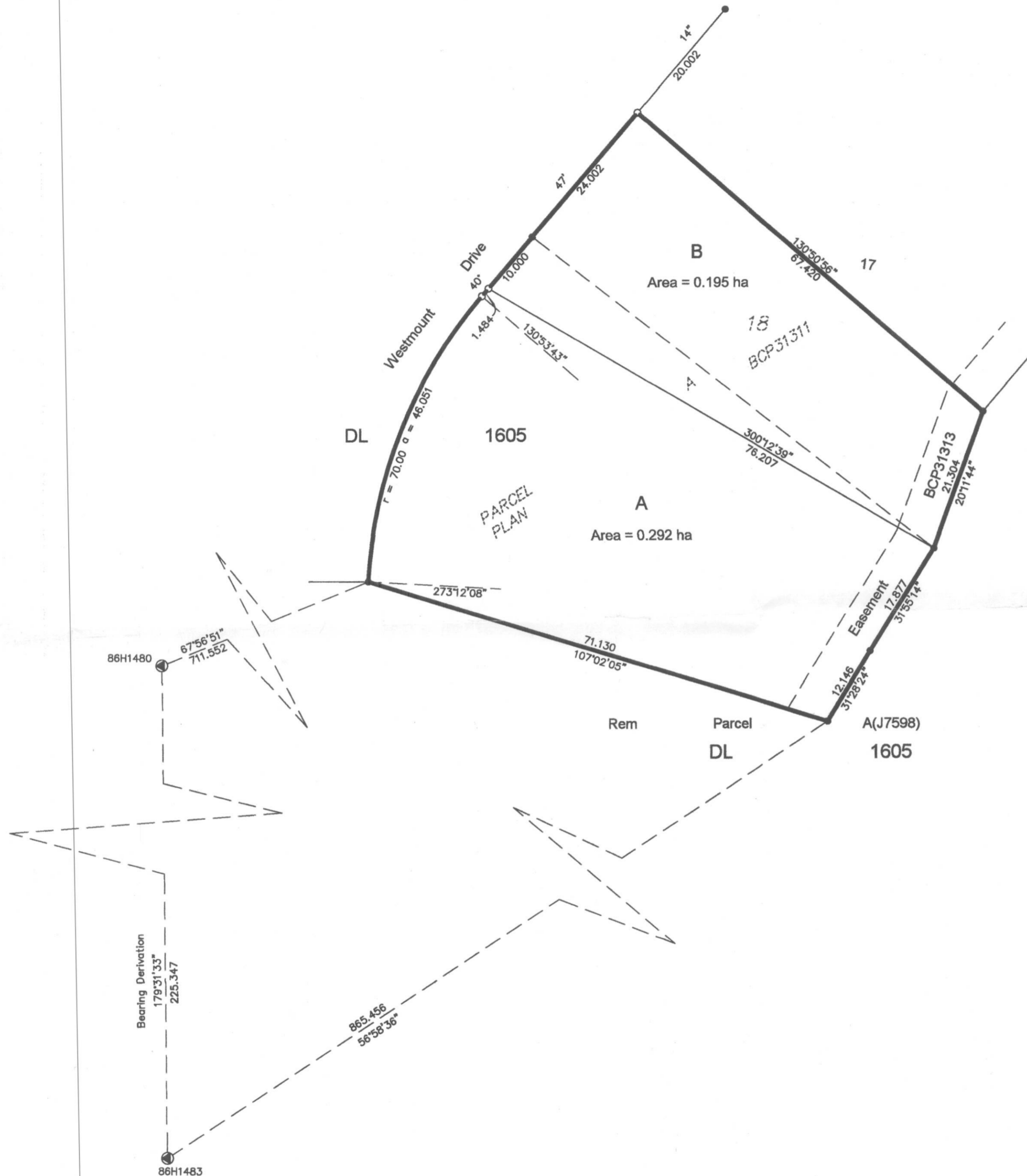


PLAN EPP12279



SUBDIVISION PLAN OF PARCEL A  
 (BEING THE CONSOLIDATION OF  
 LOTS 19 AND 20 SEE BB286744)  
 AND LOT 18, DL 1605, CARIBOO  
 DISTRICT, PLAN BCP31311

BCGS 93G. 087



All distances are in metres

The intended plot size of this plan is 560 mm in width  
 by 432 mm in height when plotted at scale 1: 500  
 (use C size sheet)

Grid bearings are derived from observations  
 between control monuments 86H1480 and 86H1483  
 Integrated Survey Area Number 39, City of  
 Prince George, NAD 83(CSRS)

This plan shows ground-level measured distances  
 Prior to computation of UTM coordinates  
 multiply by combined factor of 0.9994870

LEGEND

- Standard Iron Post Placed
- Standard Iron Post Found
- ⊙ Control Monument

This plan lies within the Fraser Fort George Regional District

The field survey represented by this plan  
 was completed by Ronald L. Kral, BCLS  
 on the 12th day of April, 2011

R.E. GOOK & ASSOCIATES  
 B.C. & CANADA LAND SURVEYORS  
 886 VANCOUVER STREET  
 PRINCE GEORGE, B.C. V2L 2P5  
 PHONE: 250-564-4242  
 FAX: 250-564-5343  
 FILE: 11-0673PG  
 regook@northernsurveys.com

This plan lies within the jurisdiction of the Approving  
 Officer of the City of Prince George  
 File No. SD100345