

**REFERENCE PLAN OF STATUTORY RIGHT OF WAY OVER
PART OF LOT 3, DISTRICT LOT 1545, CARIBOO
DISTRICT, PLAN 13257, EXCEPT PLAN EPP12201.**

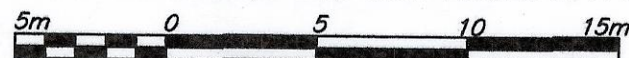
PLAN EPP12202

BCGS 93G.087

PURSUANT TO SECTION 113 OF THE LAND TITLE ACT.

THIS PLAN LIES WITHIN INTEGRATED SURVEY
AREA No. 39, PRINCE GEORGE, NAD83 (CSRS).

THE INTENDED PLOT SIZE OF THIS PLAN IS 432mm IN WIDTH BY
560mm IN HEIGHT (C SIZE) WHEN PLOTTED AT A SCALE OF 1:250



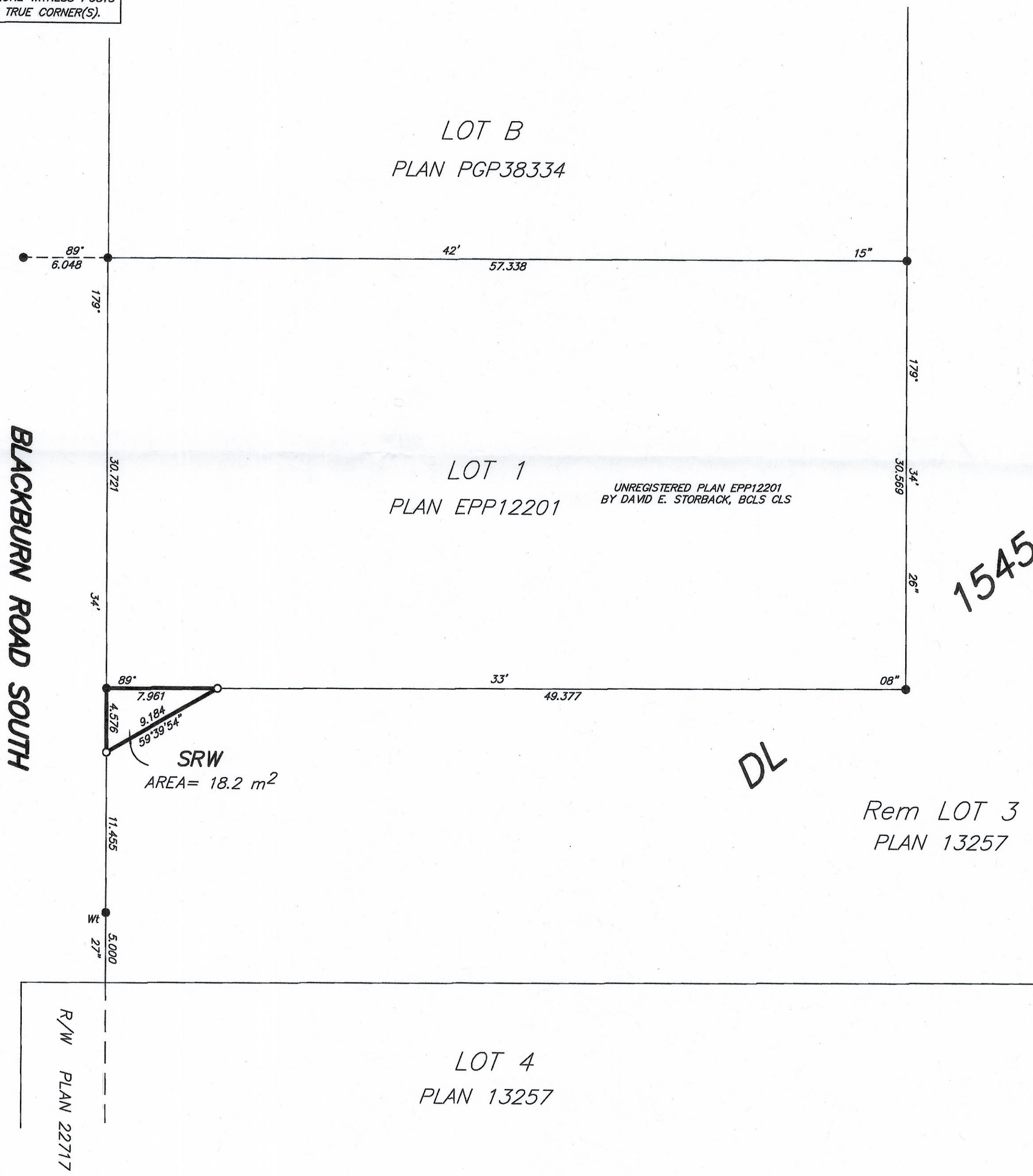
ALL DISTANCES ARE HORIZONTAL GROUND-LEVEL ARE SHOWN
IN METRES AND DECIMALS THEREOF, UNLESS OTHERWISE INDICATED.

LEGEND

GRID BEARINGS ARE DERIVED FROM PREVIOUSLY
INTEGRATED PLAN EPP12201.

- DENOTES STANDARD IRON POST FOUND
- DENOTES STANDARD IRON POST PLACED

NOTE: THIS PLAN SHOWS ONE OR MORE WITNESS POSTS
WHICH ARE NOT SET ON THE TRUE CORNER(S).



BAKER PG EPP12202 130-334-1180 Filed RCVD:2011-07-25 Page 1 of 1

THE FIELD SURVEY REPRESENTED BY THIS PLAN
WAS COMPLETED BY DAVID E. STORBACK, BCLS, CLS
ON THE 5th DAY OF APRIL, 2011.

CPG FILE #: SD100333

THIS PLAN LIES WITHIN THE REGIONAL DISTRICT OF FRASER - FORT GEORGE.



McElhanney
McElhanney Associates
Land Surveying Ltd.
Prince George, B.C.

Email: pgmats@mcelhanney.com

Ph: (250) 561-2229 Fax: (250) 563-1941

DL 1545

DWG 5894-RW