

EXPLANATORY PLAN FOR EASEMENT
OF PART OF PARCEL F (BEING A
CONSOLIDATION OF LOTS
38 TO 40 INCLUSIVE, SEE BB573550),
BLOCK 13, DISTRICT LOT 629,
CARIBOO DISTRICT, PLAN 902.

PLAN EPP118976

PURSUANT TO SECTION 99(1)(e) OF THE LAND TITLE ACT.

THIS PLAN LIES WITHIN INTEGRATED SURVEY AREA
No. 39 PRINCE GEORGE, BC, NAD83 (CSRS) 4.0.0.BC.1

BCGS 93G.097



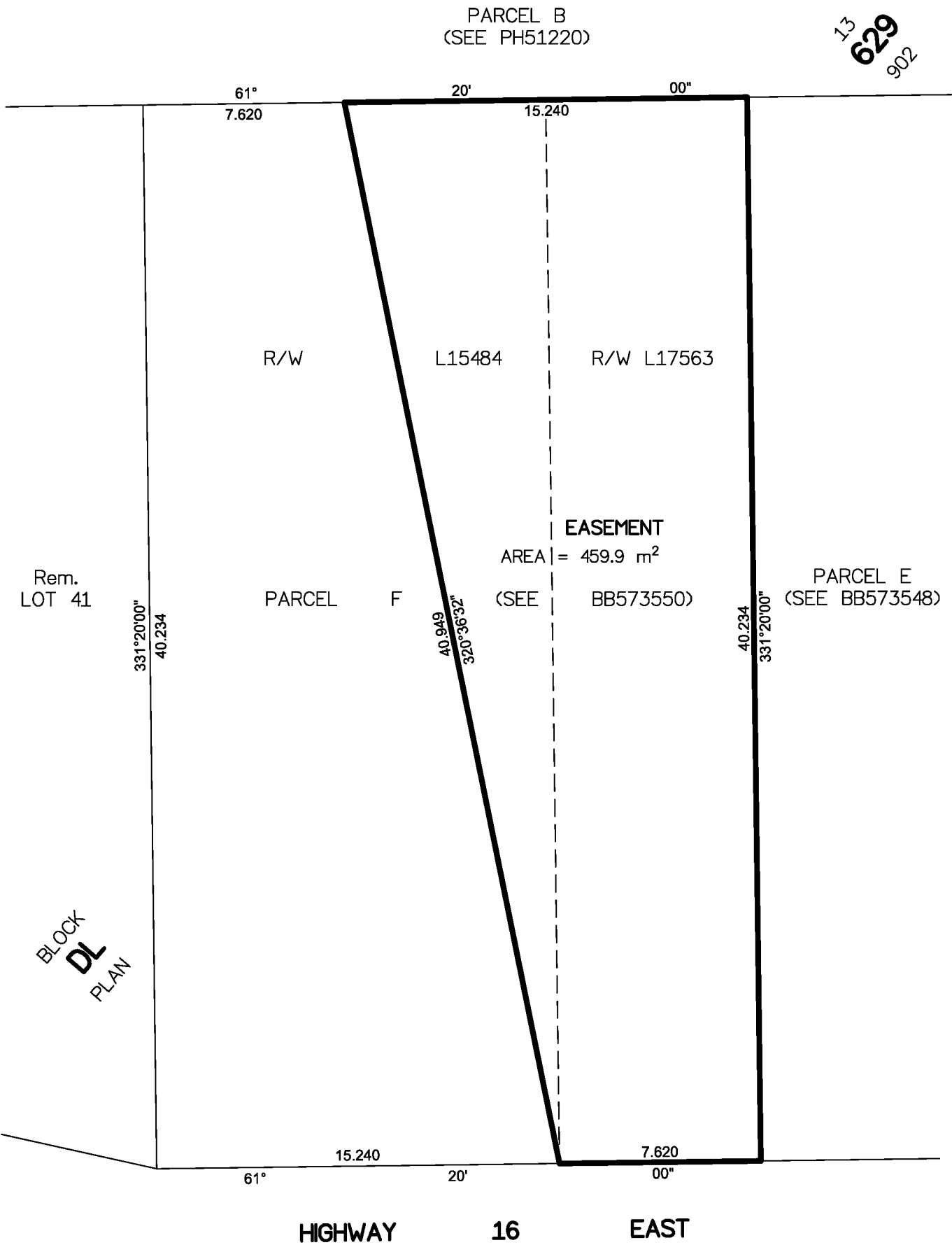
THE INTENDED PLOT SIZE OF THIS
PLAN IS 280mm IN WIDTH BY 432mm IN
HEIGHT (B SIZE) WHEN PLOTTED AT A
SCALE OF 1:200.

ALL DISTANCES ARE IN METRES AND
DECIMALS THEREOF.

THIS PLAN SHOWS HORIZONTAL
GROUND-LEVEL DISTANCES UNLESS
OTHERWISE SPECIFIED.

BEARINGS ARE MAGNETIC BASED ON
PLAN 902.

DIMENSIONS ARE DERIVED FROM
PLAN 902.



THIS PLAN IS BASED ON THE FOLLOWING
LAND TITLE AND SURVEY AUTHORITY OF BC RECORDS:
PLAN 902

SHAUNA C. GOERTZEN, BCLS 798
ON THE 2nd DAY OF MARCH, 2022

THIS PLAN LIES WITHIN THE REGIONAL DISTRICT OF FRASER-FORT GEORGE.

McElhanney
McELHANNEY ASSOCIATES
LAND SURVEYING LTD.
Suite 12
556 North Nechako Road
Prince George BC
Canada V2K 1A1
Tel 250 561 2229

File No. 2341-6855-EX