

# STATUTORY RIGHT OF WAY PLAN OVER PARTS OF LOT 100, PLAN 22809, AND LOT 154, PLAN 20259; ALL IN DISTRICT LOT 2507, CARIBOO DISTRICT.

PURSUANT TO SECTION 113 OF THE LAND TITLE ACT.

THIS PLAN LIES WITHIN INTEGRATED SURVEY AREA  
No. 39 PRINCE GEORGE, BC, NAD83 (CSRS) 4.0.0.BC.1

BCGS 93G.096



THE INTENDED PLOT SIZE OF THIS PLAN IS 560mm IN WIDTH BY 432mm IN HEIGHT (C SIZE) WHEN PLOTTED AT A SCALE OF 1:1000.

ALL DISTANCES ARE IN METRES AND DECIMALS THEREOF.

GRID BEARINGS ARE DERIVED FROM OBSERVATIONS BETWEEN GEODETIC CONTROL MONUMENTS 85H1215 AND 85H1309.

THE UTM COORDINATES AND ESTIMATED ABSOLUTE ACCURACY ACHIEVED HAVE BEEN DERIVED FROM MASCOT PUBLISHED COORDINATES AND STANDARD DEVIATIONS FOR GEODETIC CONTROL MONUMENTS 85H1215 AND 85H1309.

THIS PLAN SHOWS HORIZONTAL GROUND-LEVEL DISTANCES UNLESS OTHERWISE SPECIFIED. TO COMPUTE GRID DISTANCES, MULTIPLY GROUND-LEVEL DISTANCES BY THE AVERAGE COMBINED FACTOR OF 0.9995085 WHICH HAS BEEN DERIVED FROM CONTROL MONUMENT 85H1215 AND 85H1309.

## LEGEND

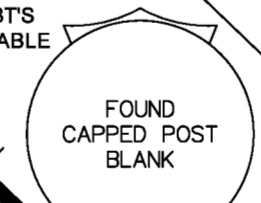
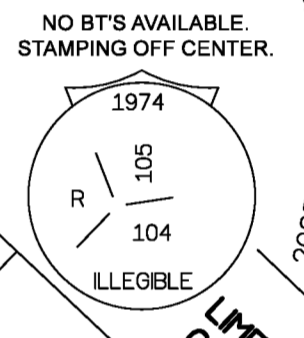
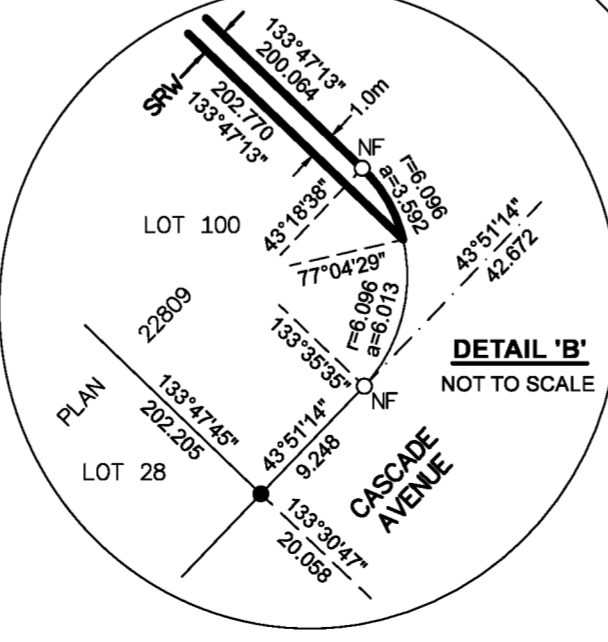
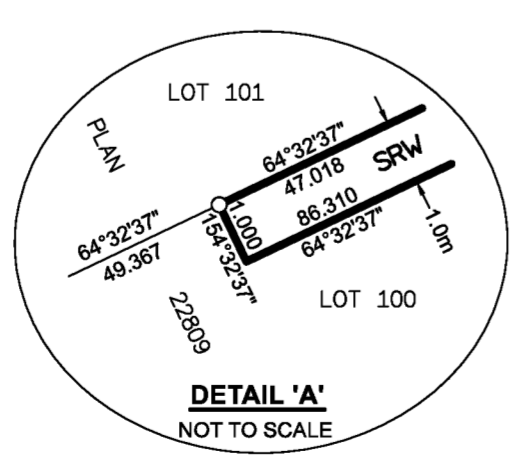
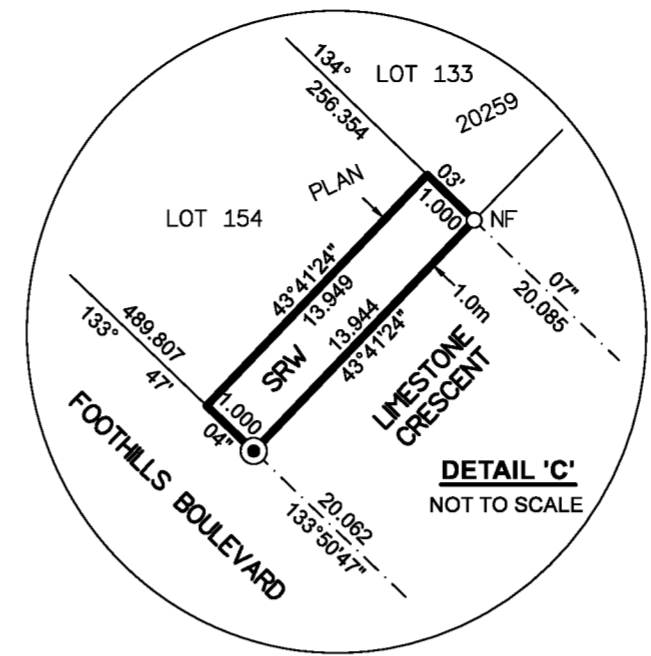
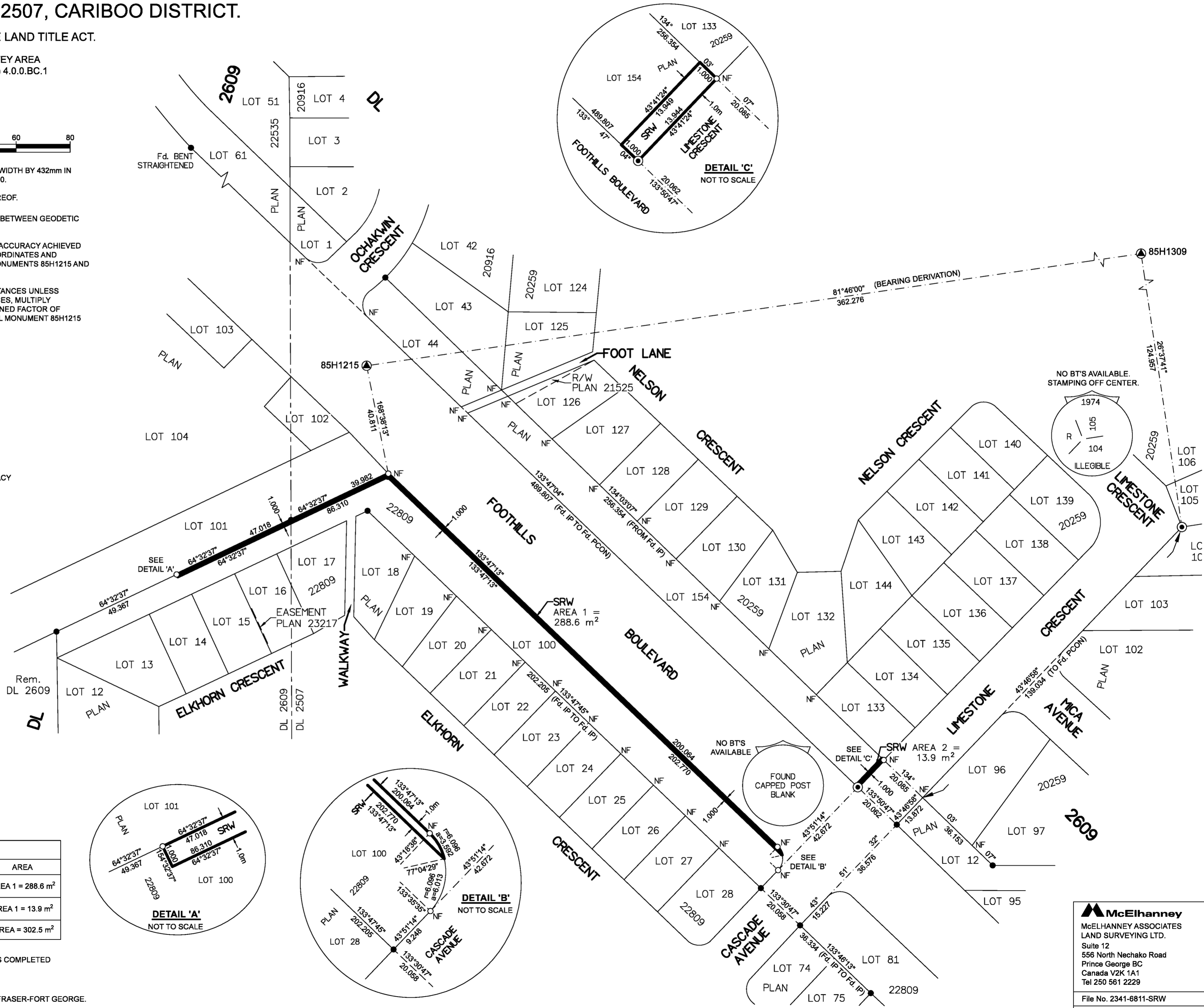
SYMBOLS	DESCRIPTION
FOUND PLACED	
▲	CONTROL MONUMENT
●	STANDARD IRON POST
⊙	STANDARD CONCRETE POST
BT	BEARING TREE
EAA	ESTIMATED ABSOLUTE ACCURACY

GEOREFERENCING POSITIONS UTM COORDINATES, ZONE 10, NAD 83 (CSRS), 4.0.0.BC.1			
STATION	NORTHING	EASTING	EAA
85H1215	5974025.10	512096.76	0.06
85H1309	5974076.95	512455.13	0.06

BOOK OF REFERENCE		
DESCRIPTION	PID	AREA
LOT 100, DISTRICT LOT 2507 CARIBOO DISTRICT, PLAN 22809.	008-745-544	AREA 1 = 288.6 m <sup>2</sup>
LOT 154, DISTRICT LOT 2507 CARIBOO DISTRICT, PLAN 20259.	010-073-051	AREA 1 = 13.9 m <sup>2</sup>
TOTAL AREA = 302.5 m <sup>2</sup>		

THE FIELD SURVEY REPRESENTED BY THIS PLAN WAS COMPLETED  
ON THE 21st DAY OF SEPTEMBER, 2021  
THOMAS DUNKLEY, BCLS 1002

THIS PLAN LIES WITHIN THE REGIONAL DISTRICT OF FRASER-FORT GEORGE.



**McElhanney**  
McELHANNEY ASSOCIATES  
LAND SURVEYING LTD.  
Suite 12  
556 North Nechako Road  
Prince George BC  
Canada V2K 1A1  
Tel 250 561 2229  
File No. 2341-6811-SRW