

REFERENCE PLAN OF PART OF LOT 1,
DISTRICT LOT 4039, CARIBOO DISTRICT,
PLAN 34009.

PLAN EPP115377

PURSUANT TO SECTION 107 OF THE LAND TITLE ACT.
FOR ROAD DEDICATION

THIS PLAN LIES WITHIN INTEGRATED SURVEY AREA
No. 39 PRINCE GEORGE, BC, NAD83 (CSRS) 4.0.0.BC.1

BCGS 93G.097



THE INTENDED PLOT SIZE OF THIS PLAN IS 280mm IN WIDTH BY 432mm IN
HEIGHT (B SIZE) WHEN PLOTTED AT A SCALE OF 1:400.

ALL DISTANCES ARE IN METRES AND DECIMALS THEREOF.

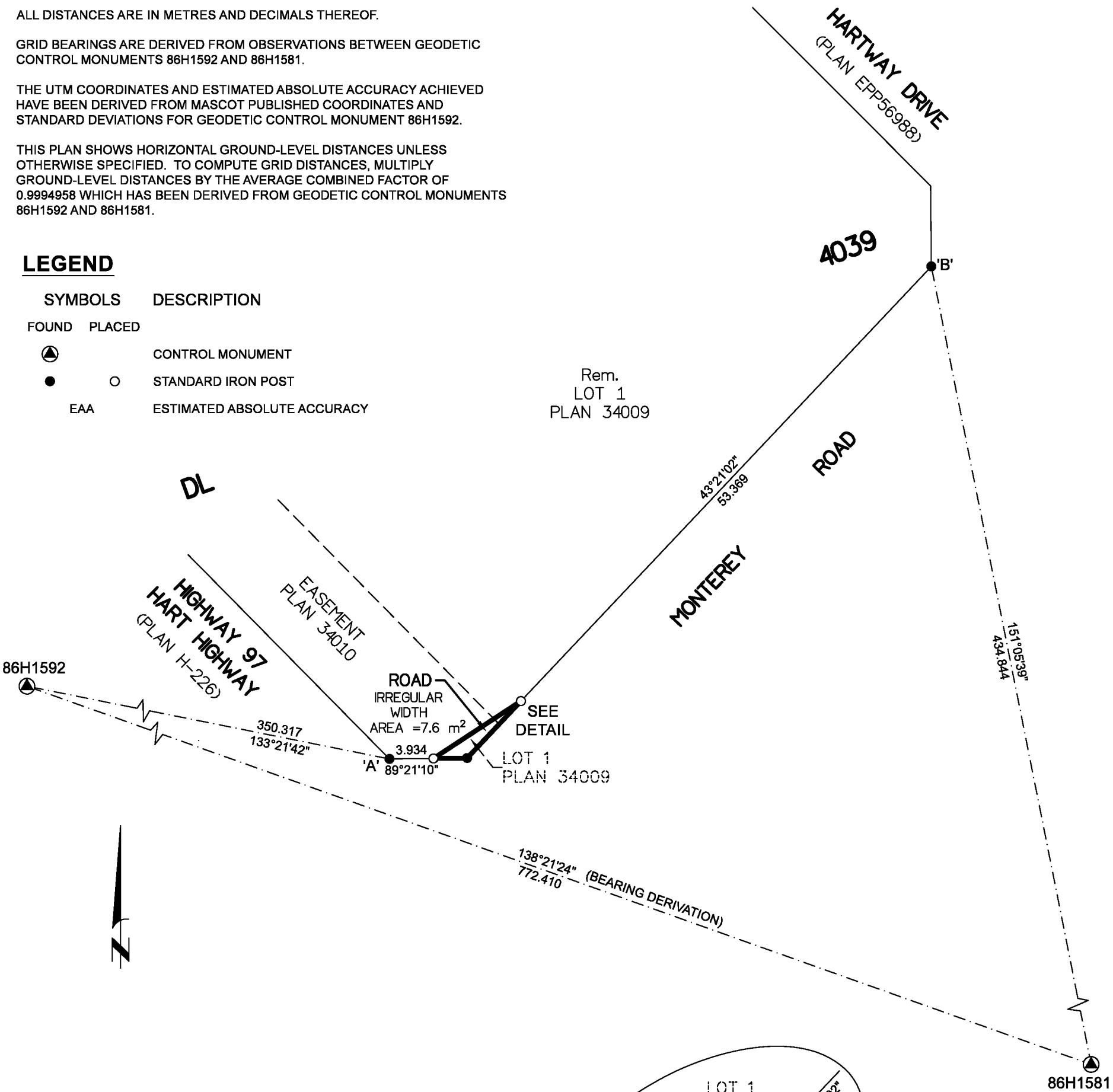
GRID BEARINGS ARE DERIVED FROM OBSERVATIONS BETWEEN GEODETIC
CONTROL MONUMENTS 86H1592 AND 86H1581.

THE UTM COORDINATES AND ESTIMATED ABSOLUTE ACCURACY ACHIEVED
HAVE BEEN DERIVED FROM MASCOT PUBLISHED COORDINATES AND
STANDARD DEVIATIONS FOR GEODETIC CONTROL MONUMENT 86H1592.

THIS PLAN SHOWS HORIZONTAL GROUND-LEVEL DISTANCES UNLESS
OTHERWISE SPECIFIED. TO COMPUTE GRID DISTANCES, MULTIPLY
GROUND-LEVEL DISTANCES BY THE AVERAGE COMBINED FACTOR OF
0.9994958 WHICH HAS BEEN DERIVED FROM GEODETIC CONTROL MONUMENTS
86H1592 AND 86H1581.

LEGEND

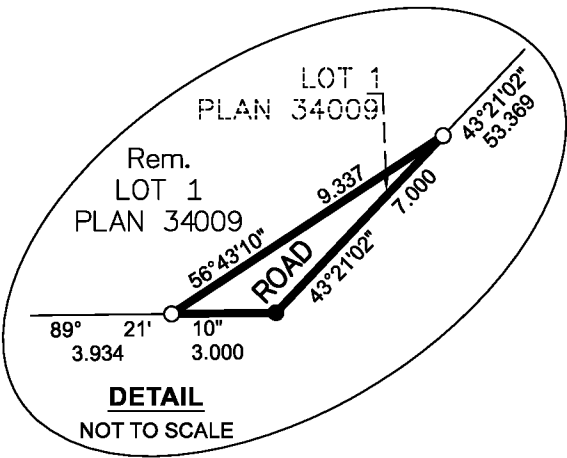
SYMBOLS		DESCRIPTION
FOUND	PLACED	
		CONTROL MONUMENT
		STANDARD IRON POST
EAA		ESTIMATED ABSOLUTE ACCURACY



GEOREFERENCING POSITIONS UTM COORDINATES, ZONE 10, NAD 83 (CSRS), 4.0.0.BC.1			
STATION	NORTHING	EASTING	EAA
Fd. IP 'A'	5981219.43	514934.37	0.10
Fd. IP 'B'	5981263.39	514982.73	0.10

THE FIELD SURVEY REPRESENTED BY THIS PLAN WAS COMPLETED
ON THE 24th DAY OF SEPTEMBER, 2021
SHAUNA C. GOERTZEN, BCLS 798

THIS PLAN LIES WITHIN THE REGIONAL DISTRICT OF FRASER-FORT GEORGE.



McElhanney
McELHANNEY ASSOCIATES
LAND SURVEYING LTD.
Suite 12
556 North Nechako Road
Prince George BC
Canada V2K 1A1
Tel 250 561 2229

File No. 2341-6823-RD