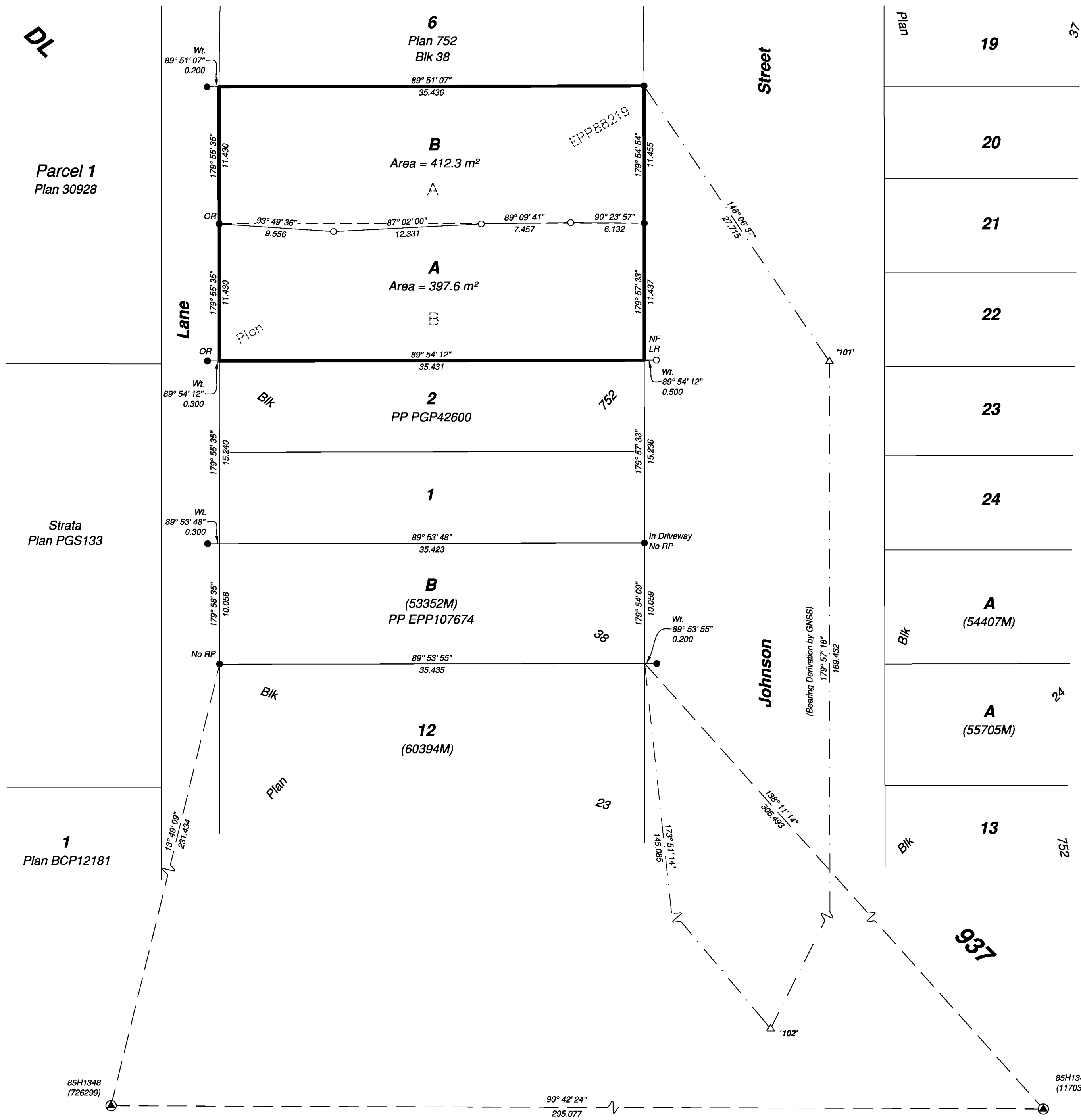


PLAN EPP115190



Subdivision Plan of Lot A and Lot B, District Lot 937, Cariboo District, Plan EPP88219

Pursuant to Section 67 of the Land Title Act

Integrated survey area No. 39 Prince George, BC, NAD83 (CSRS) 4.0.0.BC.1

BCGS 93G.097



The intended plot size of this plan is 559mm in width by 432mm in height (C size) when plotted at a scale of 1:250.

All distances are in metres and decimals thereof.

Grid bearings are derived from GNSS observations and are referred to the central meridian of UTM Zone 10 North (123° west longitude).

This plan shows horizontal ground-level distances unless otherwise specified. To compute grid distances, multiply ground-level distances by the combined factor of 0.9995108 which has been derived by single point positioning techniques using the precise point positioning (PPP) services of Natural Resources Canada.

The UTM coordinates and estimated absolute accuracies shown on this plan are a result of an independent and accurate GNSS survey. Positions for Geodetic Control Monuments which are calculated from information on this plan may not agree with official published coordinates.

Note: This plan shows one or more witness posts which are not set on the true corner(s).

Some posts are exaggerated for clarity.

All posts shown as found or placed on this plan have found or placed reference posts unless otherwise noted.

Legend

Found	Placed	Description
▲		Control Monument
●	○	Standard Iron Post
	△	Traverse Hub
CSF		Combined Scale Factor
EAA		Estimated Absolute Accuracy
LR		Lost Re-established
OR		Obliterated Restored
Blk		Block
PP		Posting Plan

Georeferencing Positions				
UTM Coordinates, Zone 10, NAD 83 (CSRS), 2002.0				
Station	Northing	Easting	EAA	CSF
101	5974627.21	514476.09	0.05	0.9995108
102	5974457.86	514476.22	0.05	0.9995110

This plan lies within the jurisdiction of the approving officer for the City of Prince George

CPG File No.: SD100717

The field survey represented by this plan was completed on the 21st day of September, 2021

Albert Koehler, BCLS 974

This plan lies within the Regional District of Fraser-Fort George

This plan lies within the City of Prince George

File: 210927-21141-GRID-SUBD

KOEHLER LAND SURVEYING INC.
1698 Lyon Street South
Prince George, BC V2N 1T3
Tel: (250) 614-9703