

SUBDIVISION PLAN OF PART OF LOT 2,
DISTRICT LOT 4041, PLAN 21020; AND PART
OF LOT B, DISTRICT LOT 7645, PLAN 24979,
EXCEPT PLAN EPP4751 AND EPP74488,
ALL IN CARIBOO DISTRICT.

PLAN EPP114714

THIS PLAN LIES WITHIN INTEGRATED SURVEY AREA
No. 39 PRINCE GEORGE, BC, NAD83 (CSRS) 4.0.0.BC.1

BCGS 93G.097

8 4 0 8 16 24 32

THE INTENDED PLOT SIZE OF THIS PLAN IS 560mm IN WIDTH BY 864mm IN
HEIGHT (D SIZE) WHEN PLOTTED AT A SCALE OF 1:400.

ALL DISTANCES ARE IN METRES AND DECIMALS THEREOF.

GRID BEARINGS ARE DERIVED FROM OBSERVATIONS BETWEEN GEODETIC
CONTROL MONUMENTS 86H1580 AND 86H1550.

THE UTM COORDINATES AND ESTIMATED ABSOLUTE ACCURACY ACHIEVED
HAVE BEEN DERIVED FROM MASCOOT PUBLISHED COORDINATES AND
STANDARD DEVIATIONS FOR GEODETIC CONTROL MONUMENT 86H1550.

THIS PLAN SHOWS HORIZONTAL GROUND-LEVEL DISTANCES UNLESS
OTHERWISE SPECIFIED. TO COMPUTE GRID DISTANCES, MULTIPLY
GROUND-LEVEL DISTANCES BY THE AVERAGE COMBINED FACTOR OF
0.9995056 WHICH HAS BEEN DERIVED FROM GEODETIC CONTROL MONUMENT
86H1550.

NOTE:
SOME LINES ARE EXAGGERATED FOR CLARITY.

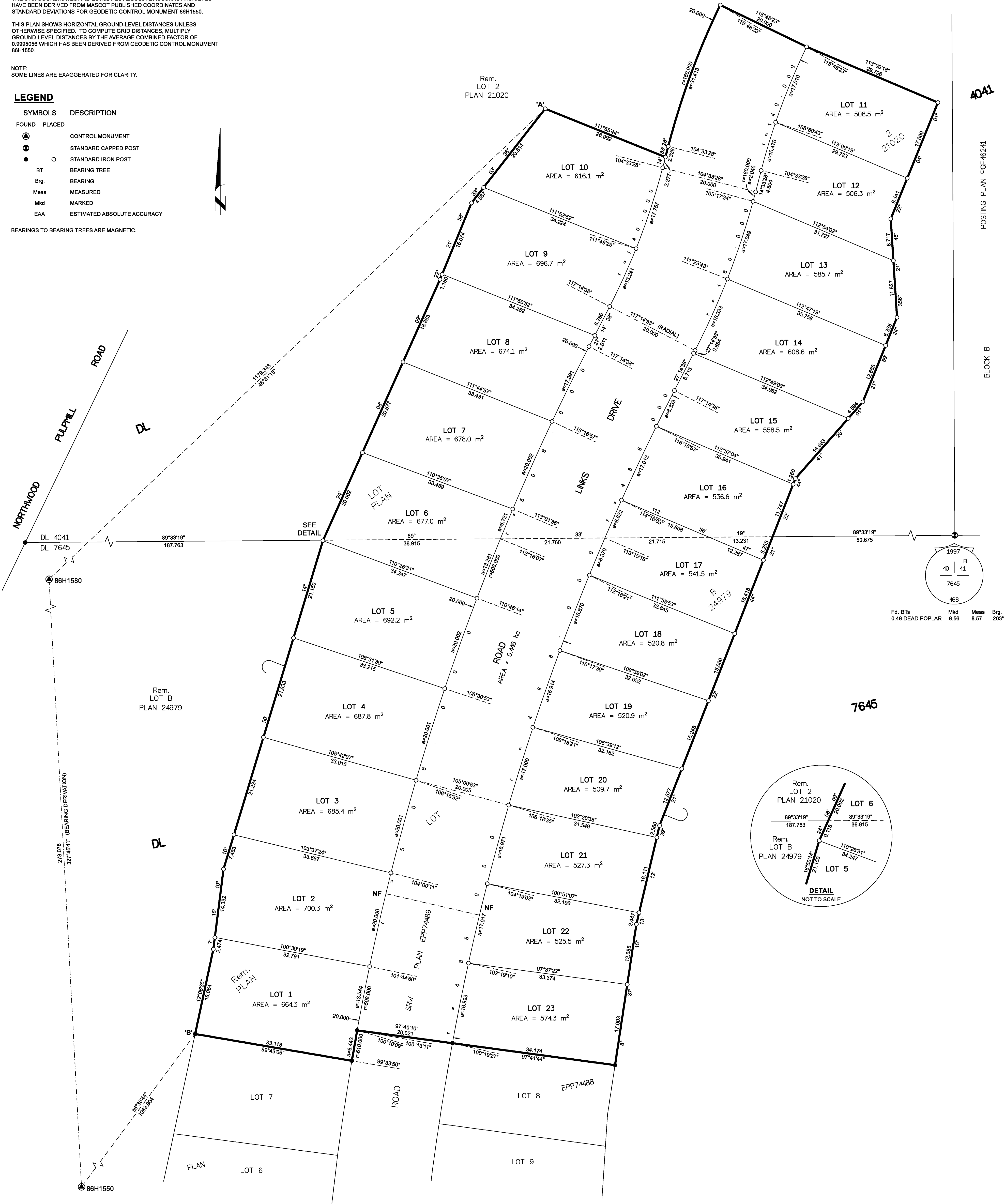
LEGEND

SYMBOLS DESCRIPTION

FOUND PLACED

- CONTROL MONUMENT
- STANDARD CAPPED POST
- STANDARD IRON POST
- BT BEARING TREE
- Brg. BEARING
- Meas. MEASURED
- Mkd. MARKED
- EAA ESTIMATED ABSOLUTE ACCURACY

BEARINGS TO BEARING TREES ARE MAGNETIC.



GEOREFERENCING POSITIONS UTM COORDINATES, ZONE 10, NAD 83 (CSRS), 4.0.0.BC.1			
STATION	NORTHING	EASTING	EAA
Pl. IP 'A'	5978395.55	518423.53	0.10
Fd. IP 'B'	5978202.93	518350.66	0.10

THIS PLAN LIES WITHIN THE JURISDICTION OF THE
APPROVING OFFICER FOR THE CITY OF PRINCE GEORGE.

CPG FILE NO. SD1000592

THE FIELD SURVEY REPRESENTED BY THIS PLAN WAS COMPLETED
ON THE 15th DAY OF AUGUST, 2021
SHAUNA C. GOERTZEN, BOLS 798

THIS PLAN LIES WITHIN THE REGIONAL DISTRICT OF FRASER-FORT GEORGE.



McELHANNEY ASSOCIATES
LAND SURVEYING LTD.
Suite 12
658 North Nechako Road
Prince George BC
Canada V2K 1A1
Tel 250 561 2229

File No. 2341-8810-S