

PLAN EPP114583

Subdivison Plan of Lot 67,  
District Lot 1599, Cariboo  
District, Plan 13589

Pursuant to Section 67 of the Land Title Act

Integrated survey area No. 39 Prince George, BC,  
NAD83 (CSRS) 4.0.0.BC.1

BCGS 93G.086



The intended plot size of this plan is 559mm in width by 432mm in height (C size) when plotted at a scale of 1:750.

All distances are in metres and decimals thereof.

Grid bearings are derived from GNSS observations and are referred to the central meridian of UTM Zone 10 North (123° west longitude).

This plan shows horizontal ground-level distances unless otherwise specified. To compute grid distances, multiply ground-level distances by the combined factor of 0.9994872 which has been derived by single point positioning techniques using the precise point positioning (PPP) services of Natural Resources Canada.

The UTM coordinates and estimated absolute accuracies shown on this plan are a result of an independent and accurate GNSS survey. Positions for Geodetic Control Monuments which are calculated from information on this plan may not agree with official published coordinates.

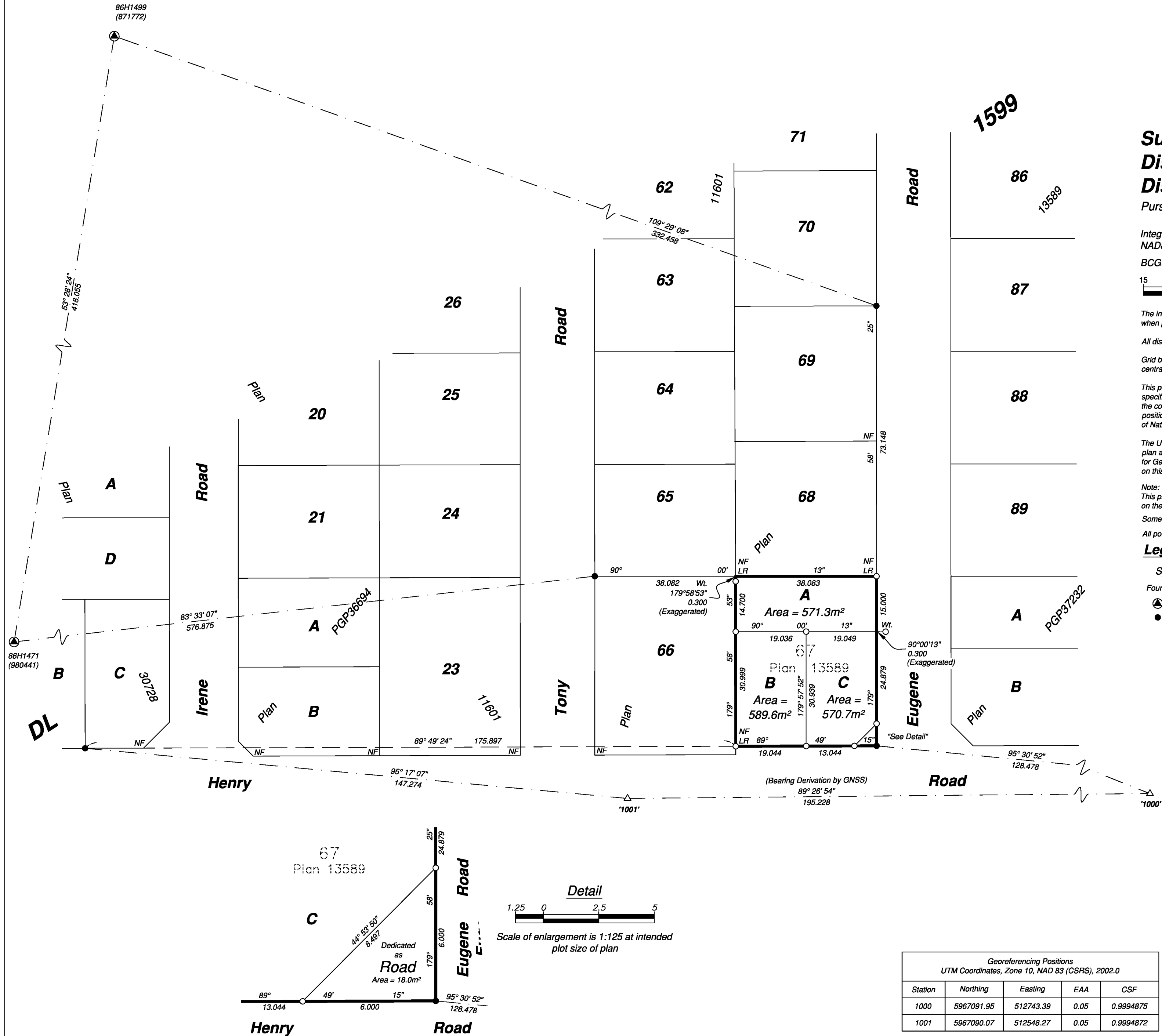
Note:  
This plan shows one or more witness posts which are not set on the true corner(s).

Some posts are exaggerated for clarity.

All posts shown as placed have reference posts unless otherwise noted.

Legend

Symbols	Description
Found Placed	
Control Monument	
Standard Iron Post	
Traverse Hub	
CSF	Combined Scale Factor
EAA	Estimated Absolute Accuracy
LR	Lost Re-established



CPG File No.: SD100640

The field survey represented by this plan was completed on the 27th day of July, 2021.

Albert Koehler, BCLS 974

This plan lies within the Regional District of Fraser-Fort George

This plan lies within the City of Prince George

Georeferencing Positions UTM Coordinates, Zone 10, NAD 83 (CSRS), 2002.0				
Station	Northing	Easting	EAA	CSF
1000	5967091.95	512743.39	0.05	0.9994875
1001	5967090.07	512548.27	0.05	0.9994872

File: 210901-21118-GRID-SUBD  
**KOEHLER LAND SURVEYING INC.**  
1698 Lyon Street South  
Prince George, BC V2N 1T3  
Tel: (250) 614-9703