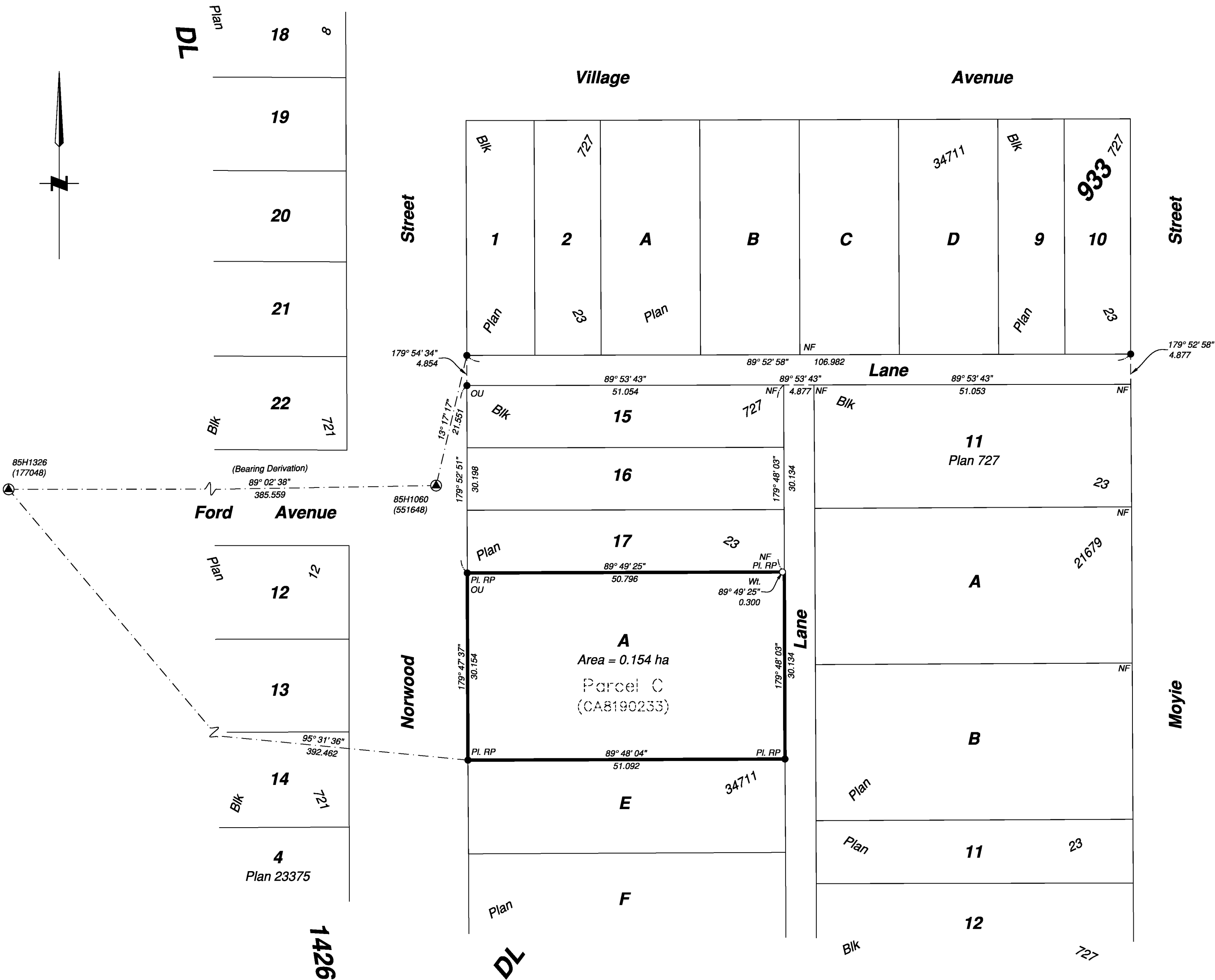


PLAN EPP114197



Reference Plan of Parcel C (Being a Consolidation of Lots 18 and 19, Block 23 and Lot 1, Block 29, See CA8190233), District Lot 933, Blocks 23 and 29, Cariboo District, Plan 727

Pursuant to Section 100(1)(a) of the Land Title Act  
Integrated survey area No. 39 Prince George, BC,  
NAD83 (CSRS) 4.0.0.BC.1  
BCGS 93G.087



The intended plot size of this plan is 559mm in width by 432mm in height (C size) when plotted at a scale of 1:500.

All distances are in metres and decimals thereof.

Grid bearings are derived from observations between Geodetic Control Monuments 85H1326 and 85H1060 and are referred to the central meridian of UTM Zone 10 North (123° west longitude).

The UTM coordinates and estimated absolute accuracy achieved have been derived from MASCOT published coordinates and standard deviations for Geodetic Control Monuments 85H1326 and 85H1060.

This plan shows horizontal ground-level distances unless otherwise specified. To compute grid distances, multiply ground-level distances by the average combined factor of 0.9995139 which has been derived from control monument 85H1060.

Note:  
This plan shows one or more witness posts which are not set on the true corner(s).

Legend

Symbols	Description
Found	Placed
	Control Monument
	Standard Iron Post
	Combined Scale Factor
	Estimated Absolute Accuracy
	Block
	Placed
	Reference Post
	Origin Unknown

Georeferencing Positions				
UTM Coordinates, Zone 10, NAD 83 (CSRS), 4.0.0.BC.1				
Station	Northing	Easting	EAA	CSF
85H1060	5971800.72	516474.01	0.10	0.9995139
85H1326	5971794.29	516088.69	0.10	0.9995133

FLNRO File No.: 7402543

The field survey represented by this plan was completed on the 3rd day of August, 2021.

Albert Koehler, BCLS 974

This plan lies within the Regional District of Fraser-Fort George

This plan lies within the City of Prince George

File: 210916-21116-GRID-CG

KOEHLER LAND SURVEYING INC.  
1698 Lyon Street South  
Prince George, BC V2N 1T3  
Tel: (250) 614-9703