

PLAN EPP112636

Subdivision Plan of:
1: Part of Parcel A (Plan 24734) of the
South East 1/4, District Lot 4046,
Cariboo District, except Plans 25412,
BCP38502, and EPP14354 and
2: Lot 86, District Lot 4046, Cariboo
District, Plan 24376

Pursuant to Section 67 of the Land Title Act

Integrated survey area No. 39 Prince George, BC,
NAD83 (CSRS) 4.0.0.BC.1

BCGS 93G.097

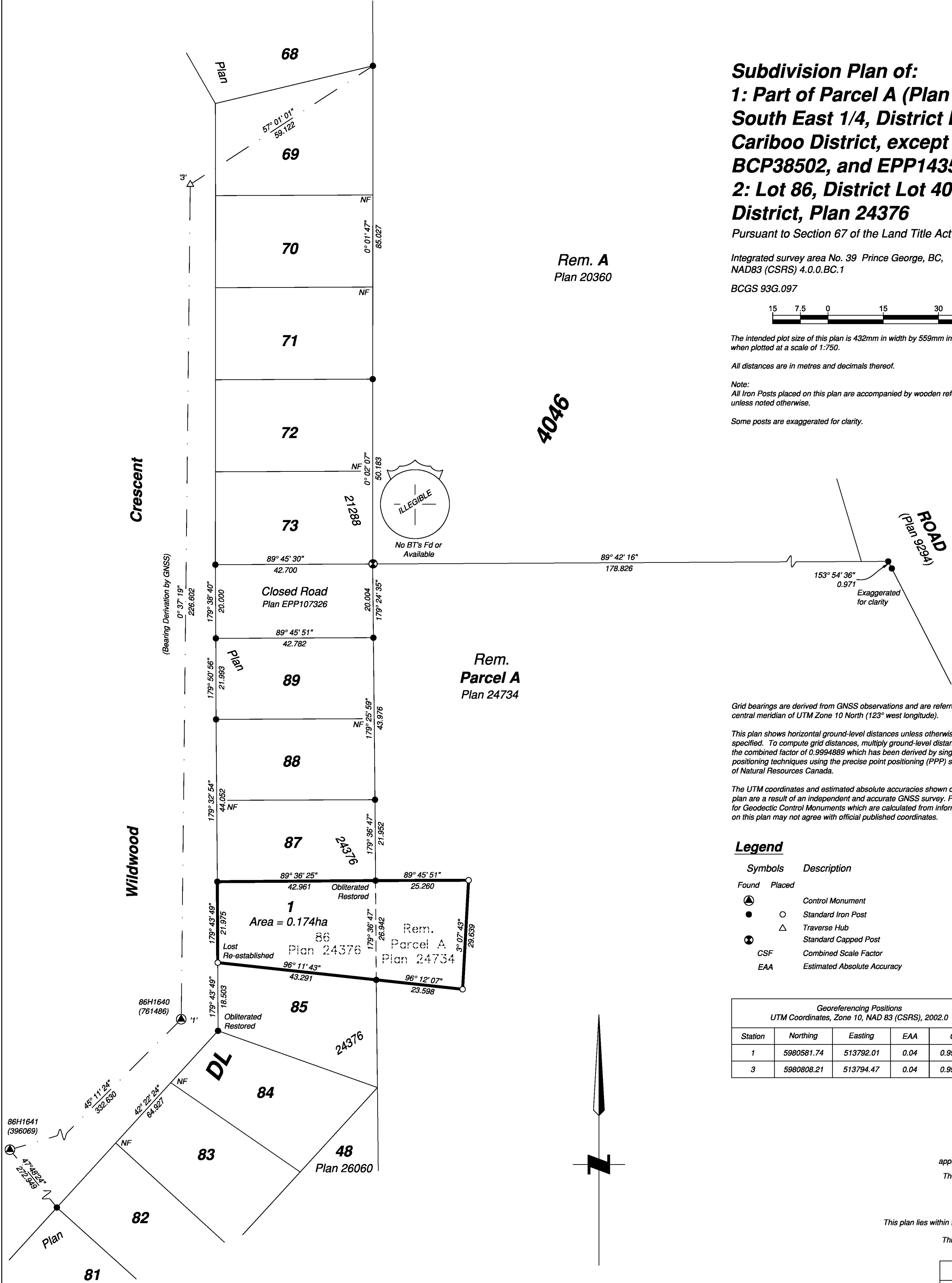


The intended plot size of this plan is 432mm in width by 559mm in height (C size)
when plotted at a scale of 1:750.

All distances are in metres and decimals thereof.

Note:
All Iron Posts placed on this plan are accompanied by wooden reference posts
unless noted otherwise.

Some posts are exaggerated for clarity.



Grid bearings are derived from GNSS observations and are referred to the
central meridian of UTM Zone 10 North (123° west longitude).

This plan shows horizontal ground-level distances unless otherwise
specified. To compute grid distances, multiply ground-level distances by
the combined factor of 0.9994889 which has been derived by single point
positioning techniques using the precise point positioning (PPP) services
of Natural Resources Canada.

The UTM coordinates and estimated absolute accuracies shown on this
plan are a result of an independent and accurate GNSS survey. Positions
for Geodetic Control Monuments which are calculated from information
on this plan may not agree with official published coordinates.

Legend

Symbols	Description
Found	Placed
Control Monument	
Standard Iron Post	
Traverse Hub	
Standard Capped Post	
CSF	Combined Scale Factor
EAA	Estimated Absolute Accuracy

Georeferencing Positions				
UTM Coordinates, Zone 10, NAD 83 (CSRS), 2002.0				
Station	Northing	Easting	EAA	CSF
1	5980581.74	513792.01	0.04	0.9994889
3	5980808.21	513794.47	0.04	0.9994882

CPG File No.: SD100687
This plan lies within the jurisdiction of the
approving officer for the City of Prince George.
The field survey represented by this plan was
completed on the 11th day of June, 2021.
Albert Koehler, BCLS 974
This plan lies within the Regional District of Fraser-Fort George
This plan lies within the City of Prince George

File: 21062-GRID-SUBD1
KOEHLER LAND SURVEYING INC. 1698 Lyon Street South Prince George, BC V2N 1T3 Tel: (250) 614-9703