

# SUBDIVISION PLAN OF LOT 9, DISTRICT LOT 9261, CARIBOO DISTRICT, PLAN 11361, EXCEPT PLANS 27436 AND 28272.

PLAN EPP11216

BCGS 93G.087

THIS PLAN LIES WITHIN INTEGRATED SURVEY AREA No. 39, PRINCE GEORGE, NAD83 (CSRS).

THE INTENDED PLOT SIZE OF THIS PLAN IS 560mm IN WIDTH BY 432mm IN HEIGHT (C SIZE) WHEN PLOTTED AT A SCALE OF 1:500.



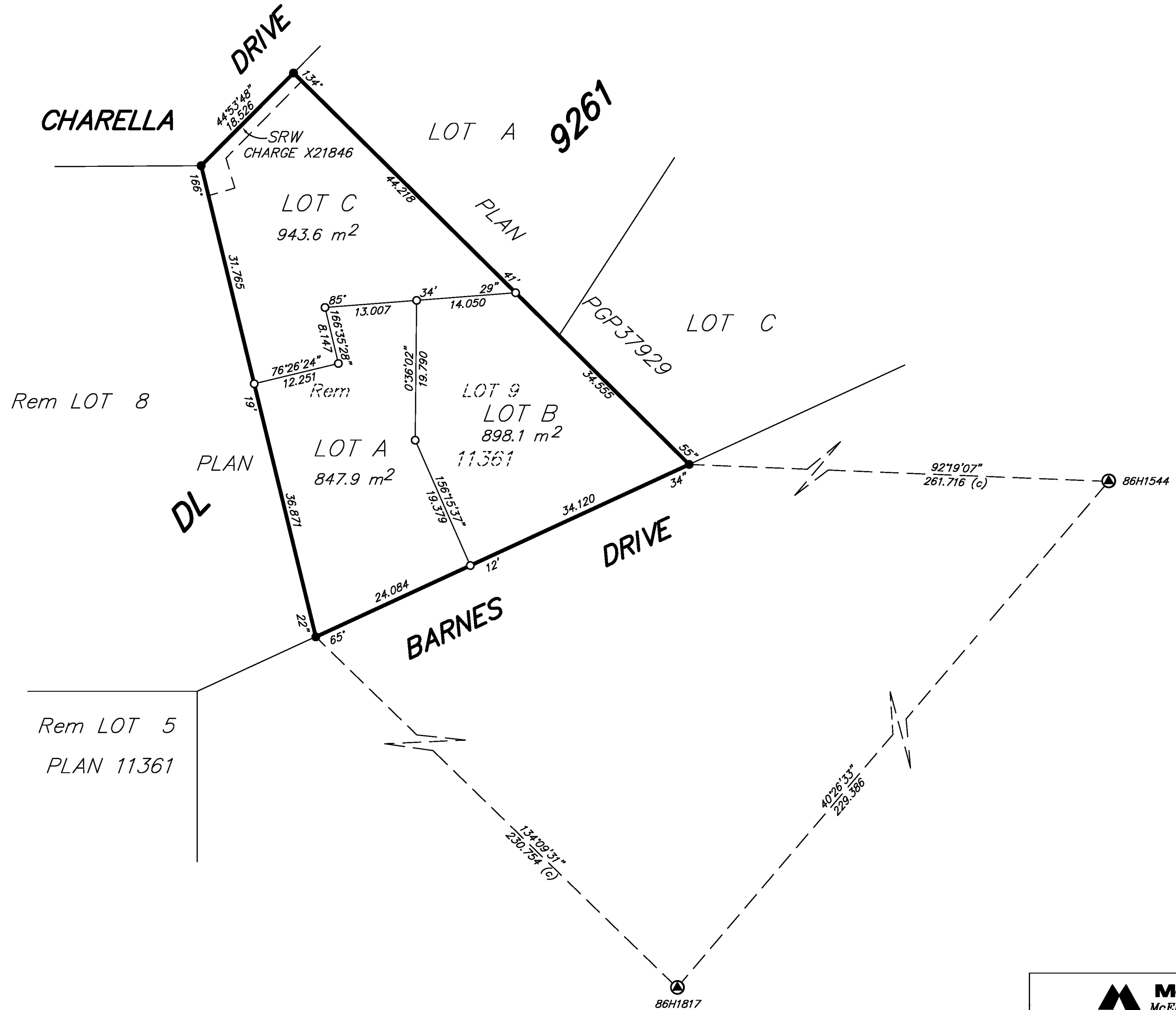
ALL DISTANCES ARE SHOWN IN METRES AND DECIMALS THEREOF, UNLESS OTHERWISE INDICATED.

**LEGEND**

GRID BEARINGS ARE DERIVED FROM OBSERVATIONS BETWEEN CONTROL MONUMENTS 86H1817 AND 86H1544.

- DENOTES CONTROL MONUMENT FOUND
- DENOTES STANDARD IRON POST FOUND
- DENOTES STANDARD IRON POST PLACED

THIS PLAN SHOWS HORIZONTAL GROUND-LEVEL DISTANCES EXCEPT WHERE OTHERWISE NOTED. TO COMPUTE GRID DISTANCES, MULTIPLY GROUND-LEVEL DISTANCES BY COMBINED FACTOR 0.99950220.




THIS PLAN LIES WITHIN THE JURISDICTION OF THE APPROVING OFFICER FOR THE CITY OF PRINCE GEORGE.

CPG FILE # SD100334

THE FIELD SURVEY REPRESENTED BY THIS PLAN WAS COMPLETED BY DAVID E. STORBACK, BCLS ON THE 8th DAY OF FEBRUARY, 2011.

THIS PLAN LIES WITHIN THE REGIONAL DISTRICT OF FRASER-FORT GEORGE.

 <b>McElhanney</b> McElhanney Associates Land Surveying Ltd. Prince George, B.C.	
Ph: (250) 561-2229 Fax: (250) 563-1941	
DL 9261	DWG - 5842 S
CPG # SD100334	