

PLAN EPP110354

**Reference Plan over part of Lot 3,
District Lot 4376, Cariboo
District, Plan EPP67523**

Pursuant to Section 99(1)(e) of the Land Title Act
For Easement Purposes

Integrated survey area No. 39 Prince George, BC,
NAD83 (CSRS) 4.0.0.BC.1

BCGS 93G.097



The intended plot size of this plan is 432mm in width by 559mm in height (C size)
when plotted at a scale of 1:300.

All distances are in metres and decimals thereof.

Grid bearings are derived from GNSS observations and are referred to the
central meridian of UTM Zone10 North (123° west longitude).

This plan shows horizontal ground-level distances unless otherwise
specified. To compute grid distances, multiply ground-level distances by
the combined factor of 0.9995101 which has been derived by single point
positioning techniques using the precise point positioning (PPP) services
of Natural Resources Canada.

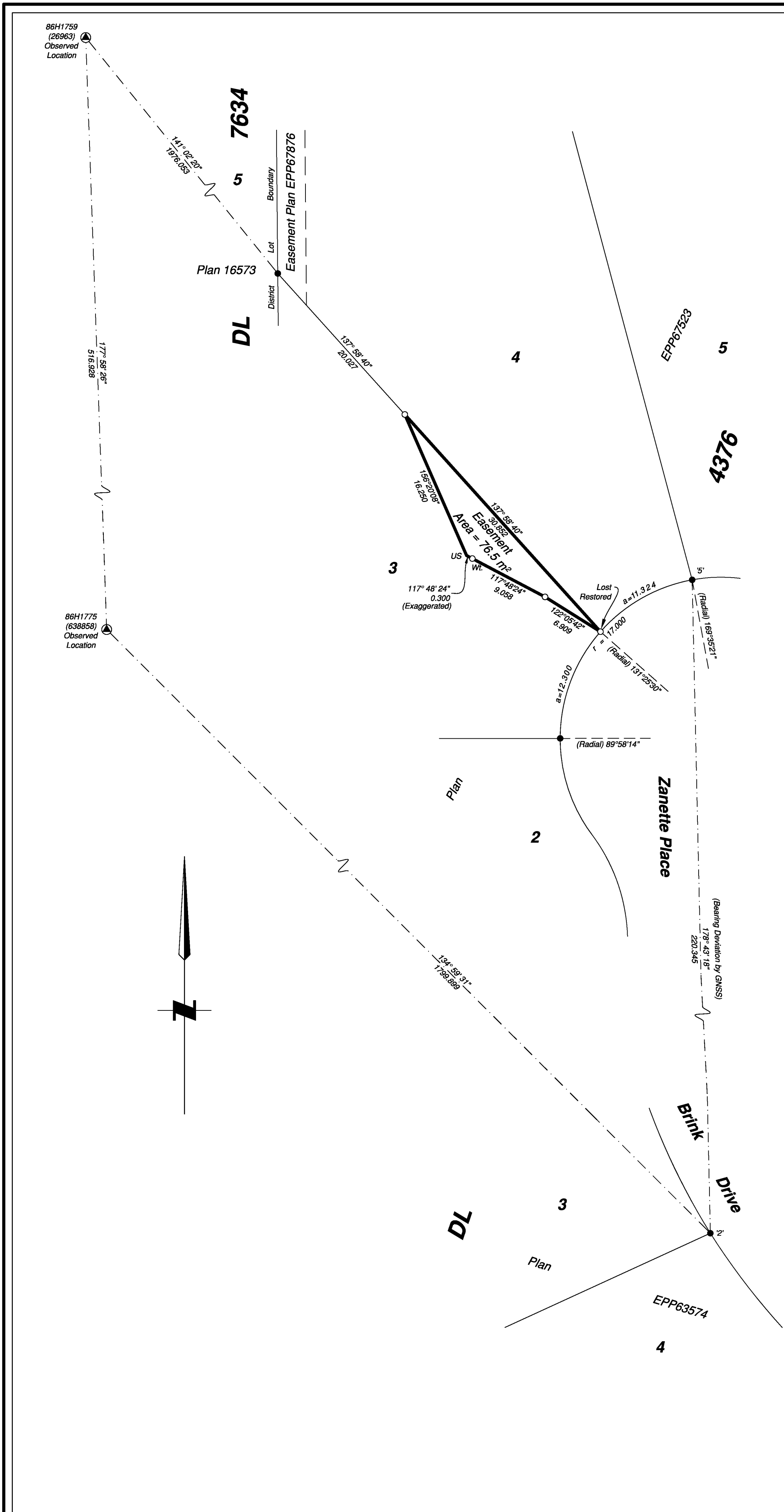
The UTM coordinates and estimated absolute accuracies shown on this
plan are a result of an independent and accurate GNSS survey. Positions
for Geodetic Control Monuments which are calculated from information
on this plan may not agree with official published coordinates.

Note:
This plan shows one or more witness posts which are not set
on the true corner(s).
Some posts are exaggerated for clarity.

Legend

Symbols	Description
Found Placed	
	Control Monument
	Standard Iron Post
CSF	Combined Scale Factor
EAA	Estimated Absolute Accuracy
US	Unsuitable to Post

Georeferencing Positions UTM Coordinates, Zone 10, NAD 83 (CSRS), 2002.0				
Station	Northing	Easting	EAA	CSF
2	5977073.05	513491.86	0.04	0.9995103
5	5977293.24	513486.95	0.04	0.9995101



The field survey represented by this plan was
completed on the 30th day of March, 2021.
Albert Koehler, BCLS 974
This plan lies within the Regional District of Fraser-Fort George

File: 21049-EASE
KOEHLER LAND SURVEYING INC.
 1698 Lyon Street South
 Prince George, BC V2N 1T3
 Tel: (250) 614-9703