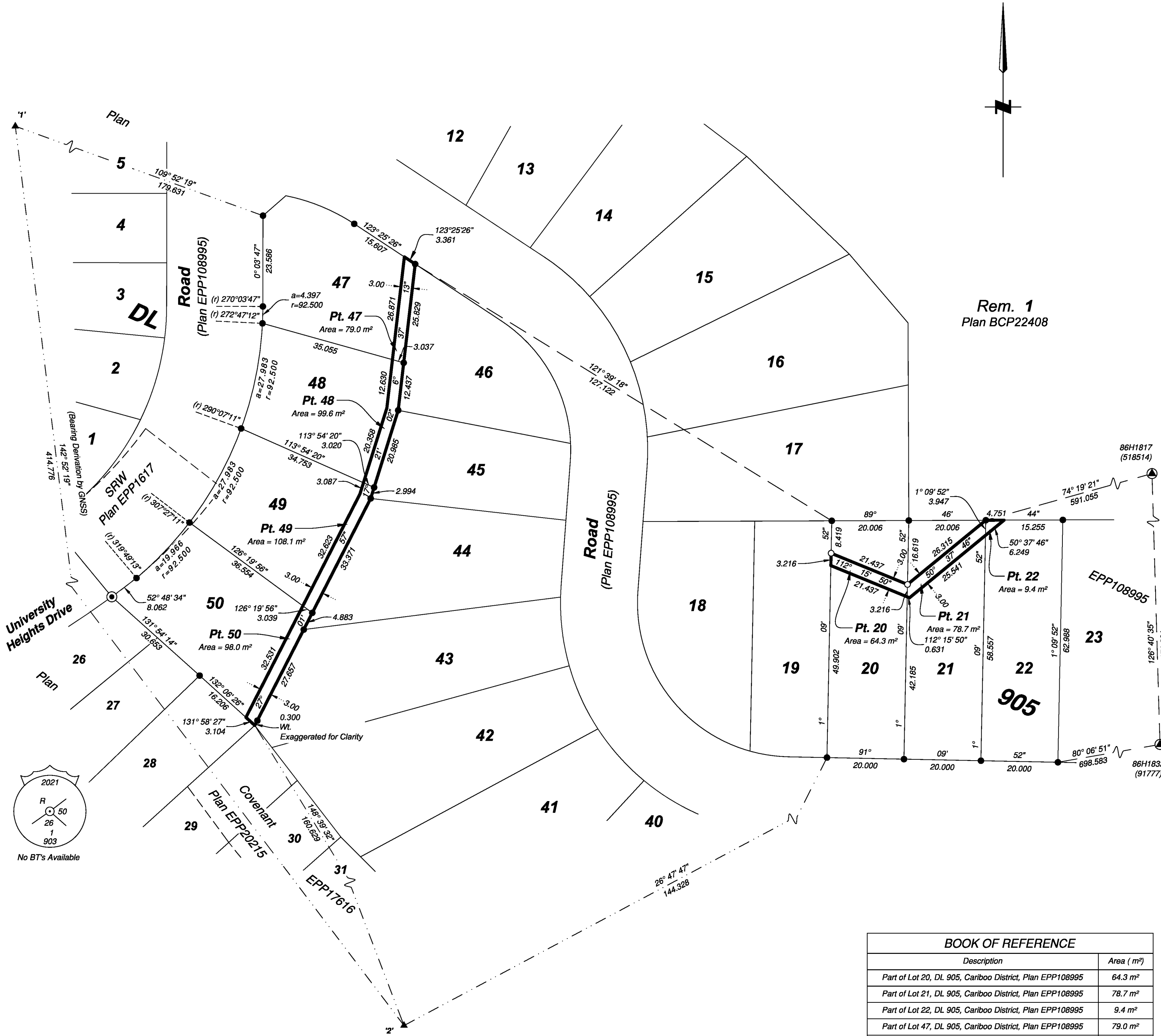


PLAN EPP108996



Reference Plan over Parts of  
Lots 20, 21, 22, 47, 48, 49, and 50,  
District Lot 905, Cariboo District,  
Plan EPP108995

Pursuant to Section 99(1)(e) of the Land Title Act  
For Easement Purposes  
Integrated survey area No. 39 Prince George, BC, NAD83 (CSRS)  
4.0.0.BC.1  
BCGS 93G.087



The intended plot size of this plan is 560mm in width by 432mm in height (C size) when plotted at a scale of 1:750.

All distances are in metres and decimals thereof.

Grid bearings are derived from GNSS observations and are referred to the central meridian of UTM Zone 10 North (123° west longitude).

This plan shows horizontal ground-level distances unless otherwise specified. To compute grid distances, multiply ground-level distances by the combined factor of 0.9994902 which has been derived by single point positioning techniques using the precise point positioning (PPP) services of Natural Resources Canada. The average combined factor has been determined based on an ellipsoidal elevation of 715.8 metres.

The UTM coordinates and estimated absolute accuracies shown on this plan are a result of an independent and accurate GNSS survey.

Positions for Geodetic Control Monuments which are calculated from information on this plan may not agree with official published coordinates.

Legend

Symbols	Description
Found	Placed
Control Monument	Standard Iron Post
Traverse Hub	Standard Concrete Post
CSF	Combined Scale Factor
EAA	Estimated Absolute Accuracy
Pt.	Part of
BT	Bearing Tree
SRW	Statutory Right of Way
Wt.	Witness
(r)	Radial

Georeferencing Positions UTM Coordinates, Zone 10, NAD 83 (CSRS), 2002.0				
Station	Northing	Easting	EAA	CSF
1	5969782.13	513243.71	0.05	0.9994902
2	5969451.60	513493.94	0.05	0.9994927

BOOK OF REFERENCE	
Description	Area ( m² )
Part of Lot 20, DL 905, Cariboo District, Plan EPP108995	64.3 m²
Part of Lot 21, DL 905, Cariboo District, Plan EPP108995	78.7 m²
Part of Lot 22, DL 905, Cariboo District, Plan EPP108995	9.4 m²
Part of Lot 47, DL 905, Cariboo District, Plan EPP108995	79.0 m²
Part of Lot 48, DL 905, Cariboo District, Plan EPP108995	99.6 m²
Part of Lot 49, DL 905, Cariboo District, Plan EPP108995	108.1 m²
Part of Lot 50, DL 905, Cariboo District, Plan EPP108995	98.0 m²
Total Area Required	537.1 m²

The field survey represented by this plan was completed on the 3rd day of February, 2022

Albert Koehler, BCLS 974

This plan lies within the City of Prince George

This plan lies within the Regional District of Fraser-Fort George

File: 220304-20158-GRID-EASE

KOEHLER LAND SURVEYING INC.  
674 - 2nd Avenue  
Prince George, BC V2L 3A2  
Tel: (250) 614-9703