

REFERENCE PLAN

Over Part of Lot 147 District Lot 2003 Cariboo District Plan 28774

Pursuant to Section 99(1)(e) of the Land Title Act.

FOR COVENANT PURPOSES

Integrated Survey Area No. 39 Prince George, BC NAD83 (CSRS) 4.0.0.BC.1

BCGS 93G.087

SCALE:



The intended plot size of this plan is 560mm in width by 432mm in height (C size) when plotted at a scale of 1:1000.

Grid bearings are derived from observations between geodetic control monuments 86H1670 and 86H1706 and are referred to the central meridian of UTM Zone 10 North.

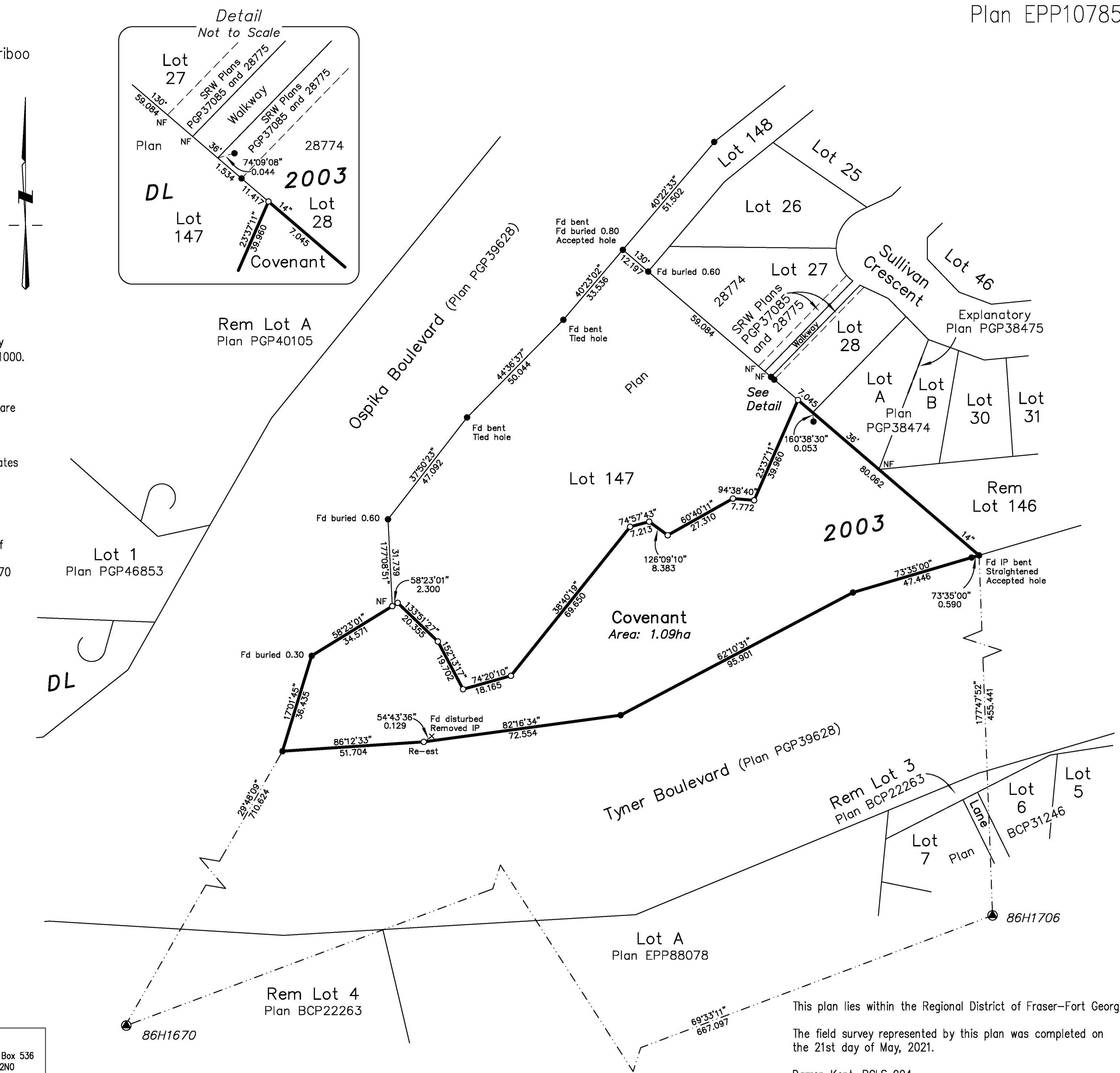
The UTM coordinates and estimated absolute accuracy achieved are derived from the MASCOT published coordinates and standard deviations for geodetic control monuments 86H1670 and 86H1706.

This plan shows horizontal ground level distances, unless otherwise specified. To compute grid distances, multiply ground level distances by the average combined factor of 0.9994959. The average combined factor has been determined based on geodetic control monuments 86H1670 and 86H1706.

LEGEND:

Symbols		Description
Found	Placed	
●	○	Control Monument
●	○	IP Standard Iron Post
○	○	EAA Estimated Absolute Accuracy
○	○	Re-est Re-established
x	x	Unmarked Measured Point

UTM Zone 10 Coordinates (Published) NAD83 (CSRS) 4.0.0.BC.1			
Station (GCM)	Northing	Easting	EAA
86H1670	5968403.30	513361.59	0.12
86H1706	5968636.23	513986.34	0.12



This plan lies within the Regional District of Fraser-Fort George.
 The field survey represented by this plan was completed on the 21st day of May, 2021.
 Darren Kent, BCLS 904

HBH LAND SURVEYING INC.
 Prince George 203-1300 1st Ave. Prince George, BC V2L 2Y3 250.640.2287
 Smithers 3750 1st Ave. PO Box 536 Smithers, BC V0J 2N0 250.847.3808
 www.HBHLandSurveying.com