

EXPLANATORY PLAN OF
STATUTORY RIGHT OF WAY

over Part of Block A (Plan B3724) District Lot 4051 Cariboo District Except Plan 22731

Pursuant to Section 99(1)(e) of the Land Title Act.

This plan lies within Integrated Survey Area No. 39
Prince George, BC, NAD83 (CSRS) 4.0.0.BC.1.

BCGS 93G.096

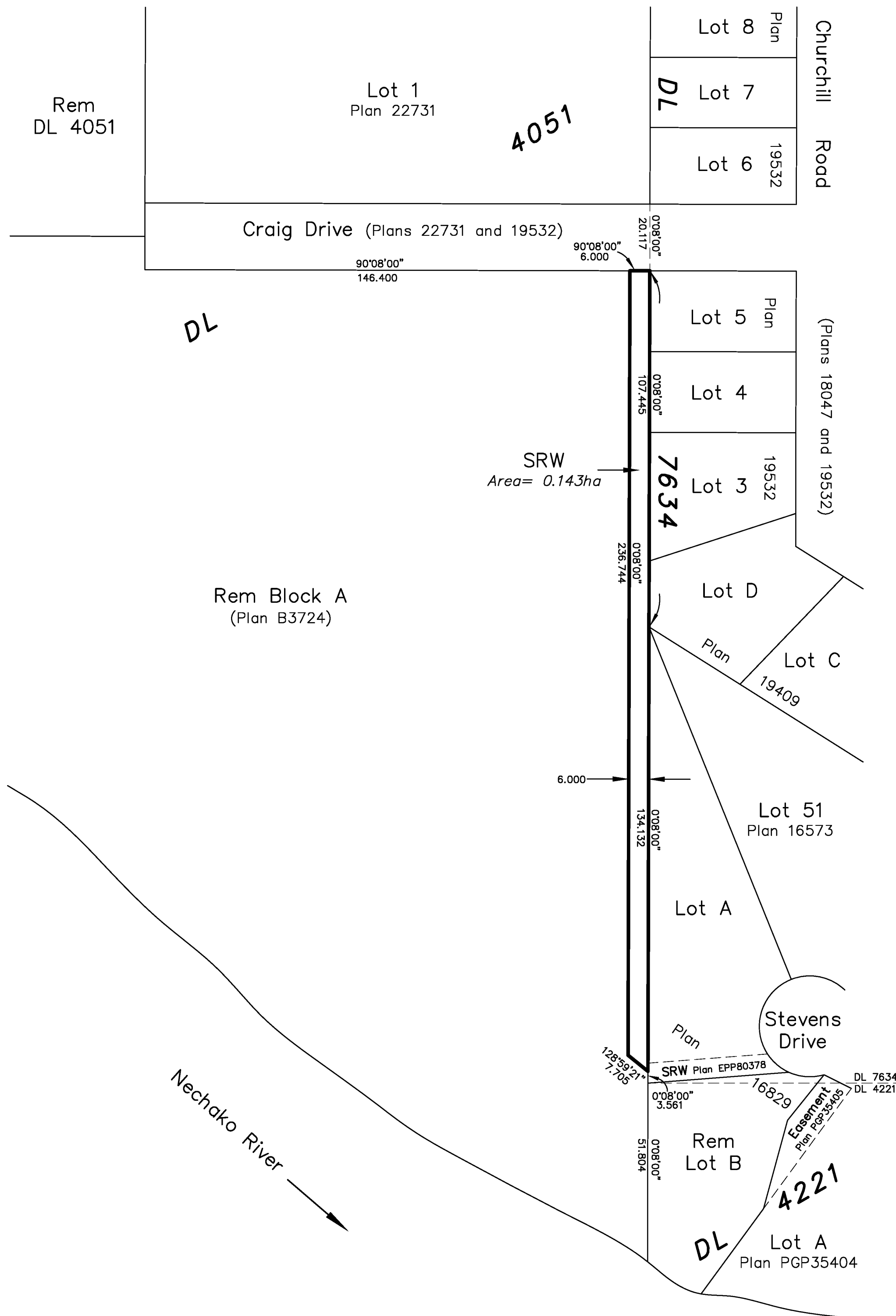
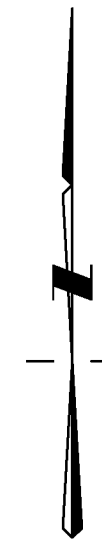
SCALE:



The intended plot size of this plan is 560mm in height by
432mm in width (C size) when plotted at a scale of 1:1000.

This plan shows horizontal ground-level distances in metres
and decimals thereof.

Bearings are astronomic and are derived from Plan 16573.



This plan lies within the Regional District of Fraser-Fort George.

This plan is based on the following Land Title and Survey
Authority of BC records:
Plan 16573
Plan 22731

Darren Kent, BCLS 904
30th day of April, 2021



Prince George
203-1300 1st Ave.
Prince George, BC V2L 2Y3
250.640.2287
www.HBHLandSurveying.com

Smithers
3750 1st Ave. PO Box 536
Smithers, BC V0J 2N0
250.847.3808