

REFERENCE PLAN

Plan EPP107846

Of Lot A and Lot B District Lot 8180
Both in Cariboo District Plan EPP96883

Pursuant to Section 100(1)(b) of the Land Title Act.

BCGS 93G.087

This plan lies within Integrated Survey Area No. 39,
Prince George, NAD83 (CSRS) 4.0.0.BC.1

SCALE:



The intended plot size of this plan is 560mm in width by
432mm in height (C size) when plotted at a scale of 1:750.

Grid bearings are derived from observations between geodetic
control monuments 85H1126 and 85H1130 and are referred
to the central meridian of UTM Zone 10 North.

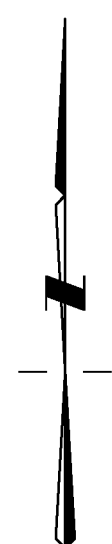
The UTM coordinates and estimated absolute accuracy
achieved are derived from the MASCOT published coordinates
and standard deviations for geodetic control monuments
85H1126 and 85H1130.

This plan shows horizontal ground-level distances, unless
otherwise specified. To compute grid distances, multiply
ground-level distances by the average combined factor of
0.999512. The average combined factor has been
determined based on geodetic control monuments 85H1126
and 85H1130.

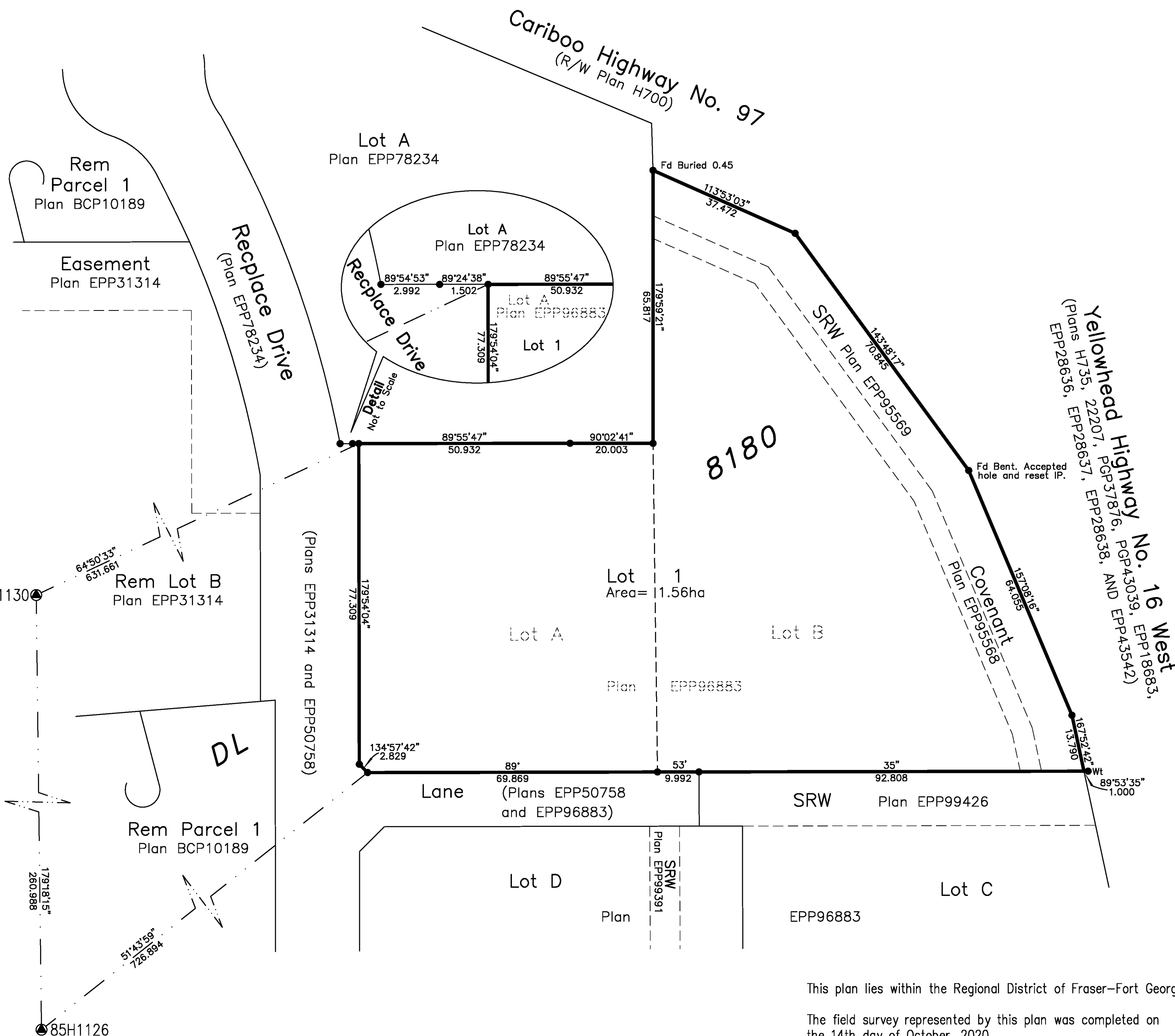
This plan shows one or more witness posts which are not set
on the true corner(s).

LEGEND

Symbols Found	Placed	Description
●	●	Control Monument
●	●	Standard Iron Post
EAA No.		Estimated Absolute Accuracy Number



UTM Zone 10 Coordinates NAD83 (CSRS) 4.0.0.BC.1			
Station	Northing	Easting	EAA
85H1126	5971541.21	514495.91	0.12
85H1130	5971802.05	514492.75	0.12



This plan lies within the Regional District of Fraser-Fort George.

The field survey represented by this plan was completed on
the 14th day of October, 2020.

Darren Kent, BCLS 904

HBH LAND SURVEYING INC.

Prince George
203-1300 1st Ave.
Prince George, BC V2L 2Y3
250.640.2287
www.HBHLandSurveying.com

Smithers
3750 1st Ave. PO Box 536
Smithers, BC V0J 2N0
250.847.3808

HBH File No. CPG2003-C