

# STATUTORY RIGHT OF WAY PLAN OVER PART OF THE SOUTH WEST 1/4 OF DISTRICT LOT 2425, CARIBOO DISTRICT, EXCEPT PLANS 29255, PGP37227, PGP40290, EPP55596, EPP98524 AND EPP107750.

PLAN EPP107752

PURSUANT TO SECTION 113 OF THE LAND TITLE ACT.

THIS PLAN LIES WITHIN INTEGRATED SURVEY AREA  
No. 39 PRINCE GEORGE, BC, NAD83 (CSRS) 4.0.0.BC.1

BCGS 93J.006



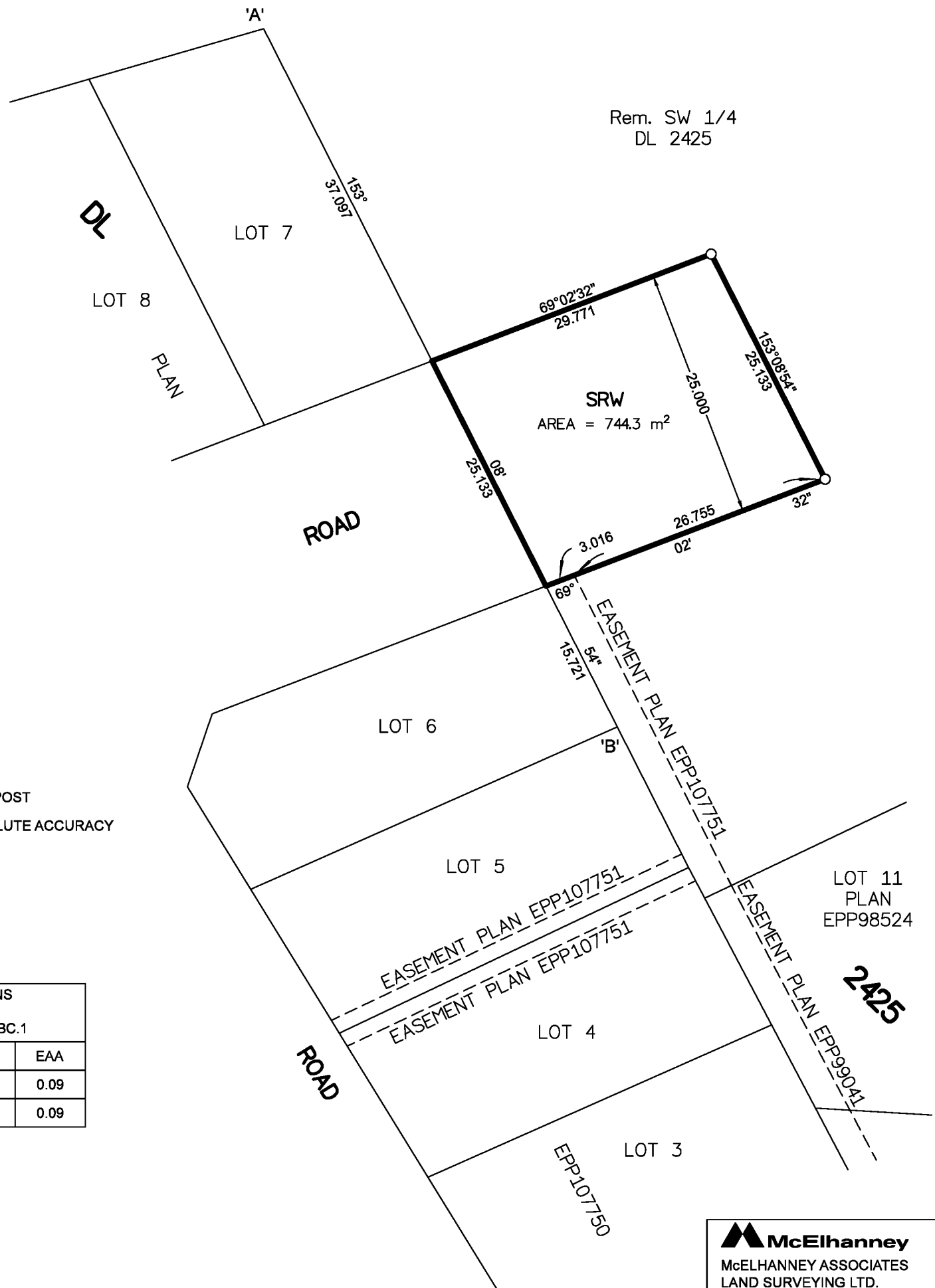
THE INTENDED PLOT SIZE OF THIS PLAN IS 280mm IN WIDTH BY 432mm IN HEIGHT (B SIZE) WHEN PLOTTED AT A SCALE OF 1:500.

ALL DISTANCES ARE IN METRES AND DECIMALS THEREOF.

GRID BEARINGS ARE DERIVED FROM PLAN EPP107750.

THE UTM COORDINATES AND ESTIMATED ABSOLUTE ACCURACY ACHIEVED HAVE BEEN DERIVED FROM PLAN EPP107750.

THIS PLAN SHOWS HORIZONTAL GROUND-LEVEL DISTANCES UNLESS OTHERWISE SPECIFIED. TO COMPUTE GRID DISTANCES, MULTIPLY GROUND-LEVEL DISTANCES BY THE COMBINED FACTOR OF 0.9994840 WHICH HAS BEEN DERIVED FROM PLAN EPP107750.



## LEGEND

| SYMBOLS |        | DESCRIPTION                 |
|---------|--------|-----------------------------|
| FOUND   | PLACED |                             |
|         | ○      | STANDARD IRON POST          |
| EAA     |        | ESTIMATED ABSOLUTE ACCURACY |

| GEOREFERENCING POSITIONS<br>UTM COORDINATES,<br>ZONE 10, NAD 83 (CSRS), 4.0.0.BC.1 |            |           |      |
|--|------------|-----------|------|
| STATION  | NORTHING   | EASTING   | EAA  |
| Fd. IP 'A'   | 5985065.85 | 511854.32 | 0.09 |
| Fd. IP 'B'   | 5984996.34 | 511889.51 | 0.09 |

THE FIELD SURVEY REPRESENTED BY THIS PLAN WAS COMPLETED  
ON THE 26th DAY OF NOVEMBER, 2020  
SHAUNA C. GOERTZEN, BCLS 798

THIS PLAN LIES WITHIN THE REGIONAL DISTRICT OF FRASER-FORT GEORGE.

**McElhanney**  
McELHANNEY ASSOCIATES  
LAND SURVEYING LTD.  
Suite 12  
556 North Nechako Road  
Prince George BC  
Canada V2K 1A1  
Tel 250 561 2229

File No. 2341-6767-SRW