

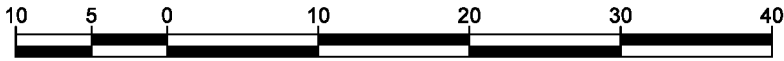
REFERENCE PLAN OF EASEMENT OVER PART OF LOTS 4 AND 5, PLAN EPP107750, AND PART OF THE SOUTH WEST 1/4, EXCEPT PLANS 29255, PGP37227, PGP40290, EPP55596, AND EPP98524, ALL IN DISTRICT LOT 2425, CARIBOO DISTRICT.

PLAN EPP107751

PURSUANT TO SECTION 99(1)(e) OF THE LAND TITLE ACT.
FOR EASEMENT PURPOSES

THIS PLAN LIES WITHIN INTEGRATED SURVEY AREA
No. 39 PRINCE GEORGE, BC, NAD83 (CSRS) 4.0.0.BC.1

BCGS 93J.006



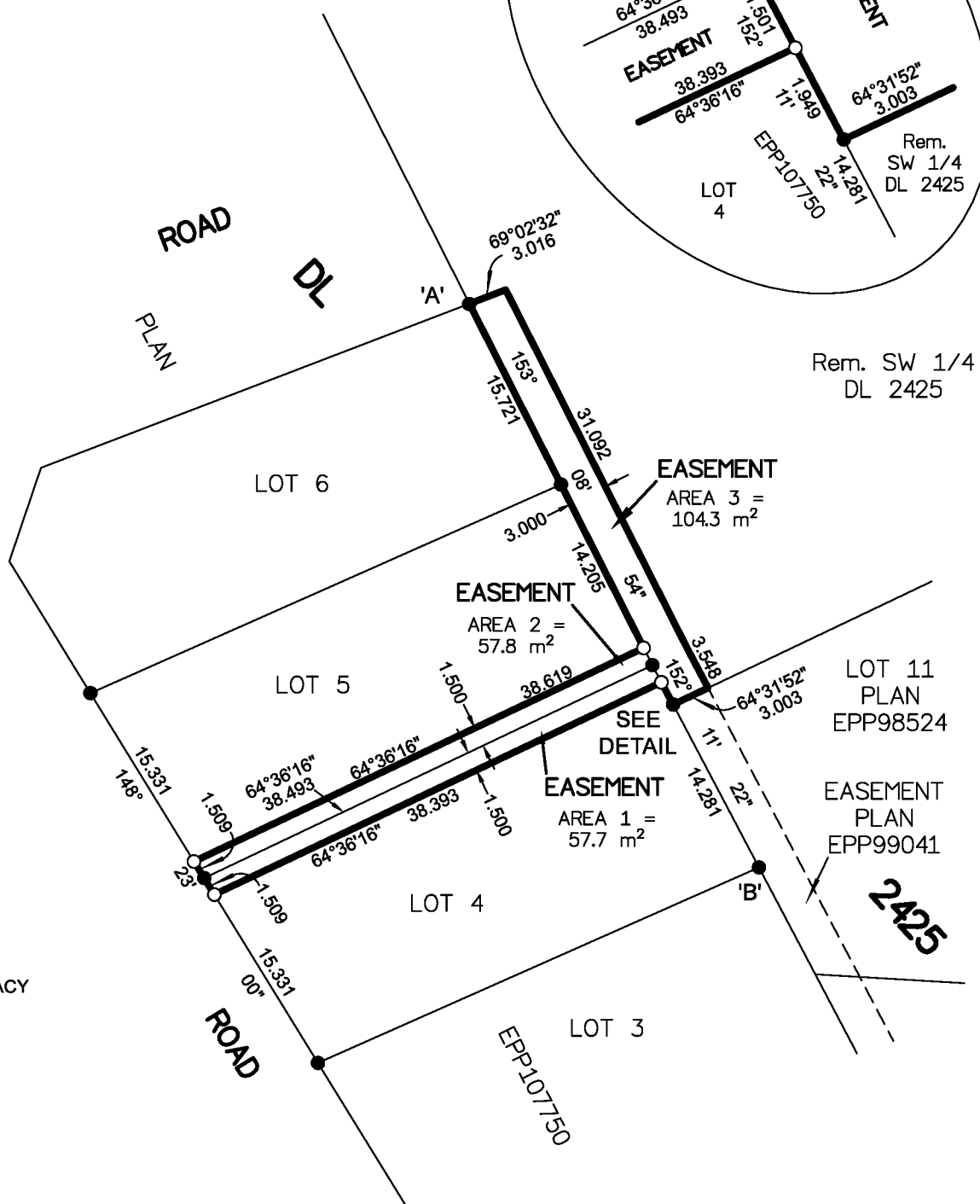
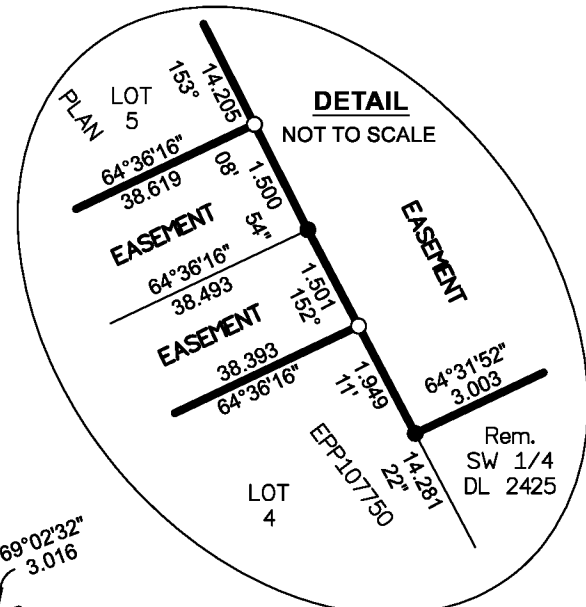
THE INTENDED PLOT SIZE OF THIS PLAN IS 280mm IN WIDTH BY 432mm IN HEIGHT (B SIZE) WHEN PLOTTED AT A SCALE OF 1:500.

ALL DISTANCES ARE IN METRES AND DECIMALS THEREOF.

GRID BEARINGS ARE DERIVED
FROM PLAN EPP107750.

THE UTM COORDINATES AND
ESTIMATED ABSOLUTE ACCURACY
ACHIEVED HAVE BEEN DERIVED
FROM PLAN EPP107750.

THIS PLAN SHOWS HORIZONTAL
GROUND-LEVEL DISTANCES UNLESS
OTHERWISE SPECIFIED. TO COMPUTE
GRID DISTANCES, MULTIPLY
GROUND-LEVEL DISTANCES BY THE
COMBINED FACTOR OF 0.9994840
WHICH HAS BEEN DERIVED FROM
PLAN EPP107750.



LEGEND

SYMBOLS		DESCRIPTION
●	○	FOUND PLACED STANDARD IRON POST
EAA		ESTIMATED ABSOLUTE ACCURACY

GEOREFERENCING POSITIONS UTM COORDINATES, ZONE 10, NAD 83 (CSRS), 4.0.0.BC.1			
STATION	NORTHING	EASTING	EAA
Fd. IP 'A'	5985010.36	511882.42	0.09
Fd. IP 'B'	5984966.66	511904.87	0.09

BOOK OF REFERENCE		
DESCRIPTION	PID	AREA
LOT 4, DISTRICT LOT 2425, CARIBOO DISTRICT, PLAN EPP107750	---	AREA 1 = 57.7 m ²
LOT 5, DISTRICT LOT 2425, CARIBOO DISTRICT, PLAN EPP107750	---	AREA 2 = 57.8 m ²
SOUTH WEST 1/4 OF DISTRICT LOT 2425, CARIBOO DISTRICT, EXCEPT PLANS 29255, PGP37227, PGP40290, EPP55596, AND EPP98524.	015-036-855	AREA 3 = 104.3 m ²
TOTAL EASEMENT AREA = 219.8 m ²		

THE FIELD SURVEY REPRESENTED BY THIS PLAN WAS COMPLETED
ON THE 26th DAY OF NOVEMBER, 2020
SHAUNA C. GOERTZEN, BCLS 798

THIS PLAN LIES WITHIN THE REGIONAL DISTRICT OF FRASER-FORT GEORGE.

McElhanney
McELHANNEY ASSOCIATES
LAND SURVEYING LTD.
Suite 12
556 North Nechako Road
Prince George BC
Canada V2K 1A1
Tel 250 561 2229

File No. 2341-6767-E