

REFERENCE PLAN OF ROAD DEDICATION OF PART OF LOT 1, DISTRICT LOT 2424, CARIBOO DISTRICT, PLAN 33278.

PLAN EPP107717

PURSUANT TO SECTION 107 OF THE LAND TITLE ACT.
FOR ROAD DEDICATION

THIS PLAN LIES WITHIN INTEGRATED SURVEY AREA
No. 39 PRINCE GEORGE, BC, NAD83 (CSRS) 4.0.0.BC.1

BCGS 93J.006



THE INTENDED PLOT SIZE OF THIS PLAN IS 280mm IN WIDTH BY 432mm IN HEIGHT
(B SIZE) WHEN PLOTTED AT A SCALE OF 1:750.

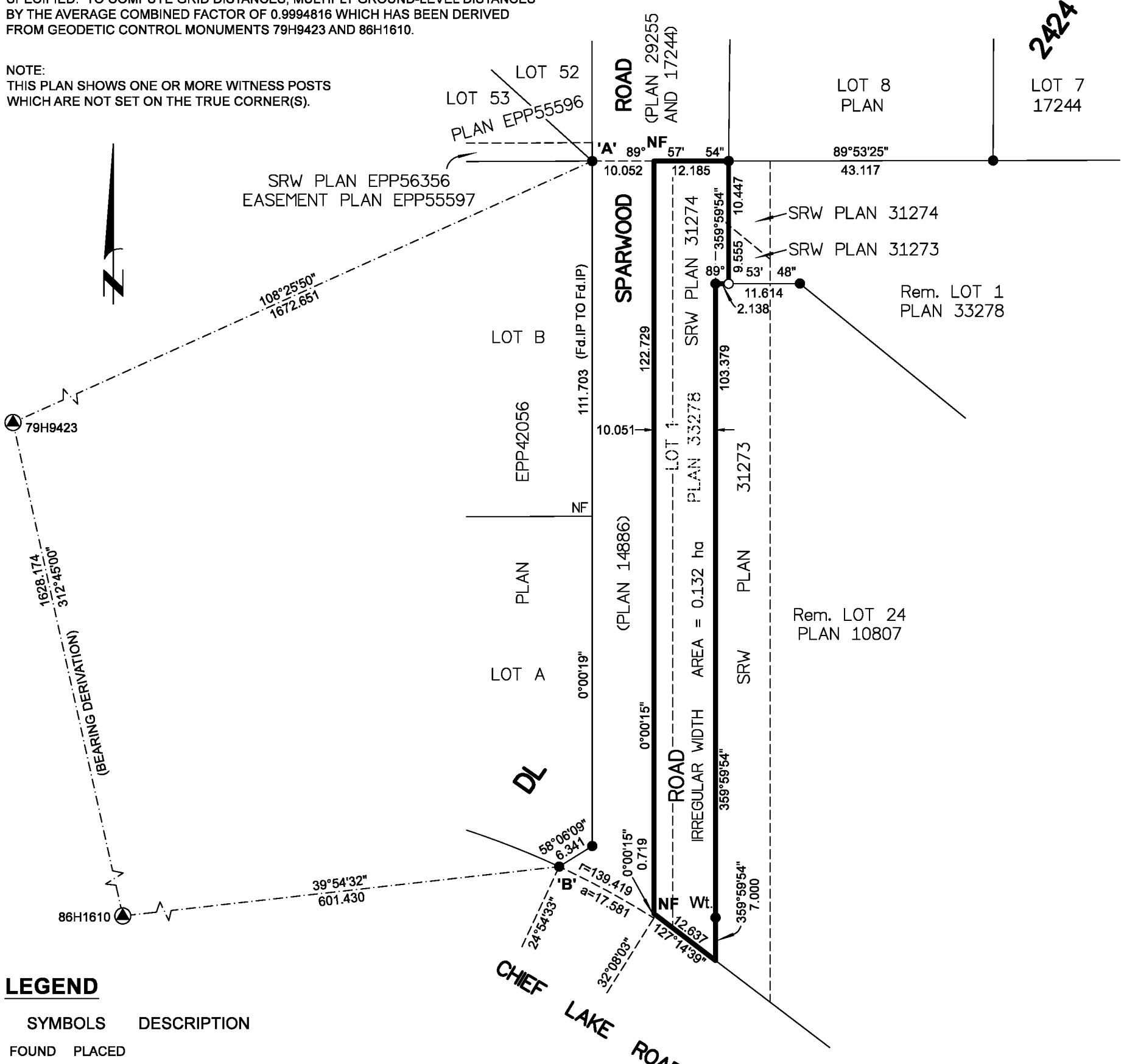
ALL DISTANCES ARE IN METRES AND DECIMALS THEREOF.

GRID BEARINGS ARE DERIVED FROM OBSERVATIONS BETWEEN GEODETIC
CONTROL MONUMENTS 79H9423 AND 86H1610.

THE UTM COORDINATES AND ESTIMATED ABSOLUTE ACCURACY ACHIEVED HAVE
BEEN DERIVED FROM MASCOT PUBLISHED COORDINATES AND STANDARD
DEVIATIONS FOR GEODETIC CONTROL MONUMENT 86H1610.

THIS PLAN SHOWS HORIZONTAL GROUND-LEVEL DISTANCES UNLESS OTHERWISE
SPECIFIED. TO COMPUTE GRID DISTANCES, MULTIPLY GROUND-LEVEL DISTANCES
BY THE AVERAGE COMBINED FACTOR OF 0.9994816 WHICH HAS BEEN DERIVED
FROM GEODETIC CONTROL MONUMENTS 79H9423 AND 86H1610.

NOTE:
THIS PLAN SHOWS ONE OR MORE WITNESS POSTS
WHICH ARE NOT SET ON THE TRUE CORNER(S).



LEGEND

SYMBOLS	DESCRIPTION
FOUND PLACED	
▲	CONTROL MONUMENT
● ○	STANDARD IRON POST
EAA	ESTIMATED ABSOLUTE ACCURACY

THE FIELD SURVEY REPRESENTED BY THIS PLAN WAS COMPLETED
ON THE 19th DAY OF NOVEMBER, 2020
SHAUNA C. GOERTZEN, BCLS 798

THIS PLAN LIES WITHIN THE REGIONAL DISTRICT OF FRASER-FORT GEORGE.

GEOREFERENCING POSITIONS UTM COORDINATES, ZONE 10, NAD 83 (CSRS), 4.0.0.BC.1			
STATION	NORTHING	EASTING	EAA
Fd. IP 'A'	5984721.44	512219.46	0.10
Fd. IP 'B'	5984606.45	512214.07	0.10

McElhanney
McELHANNEY ASSOCIATES
LAND SURVEYING LTD.
Suite 12
556 North Nechako Road
Prince George BC
Canada V2K 1A1
Tel 250 561 2229
File No. 2341-6773-RD