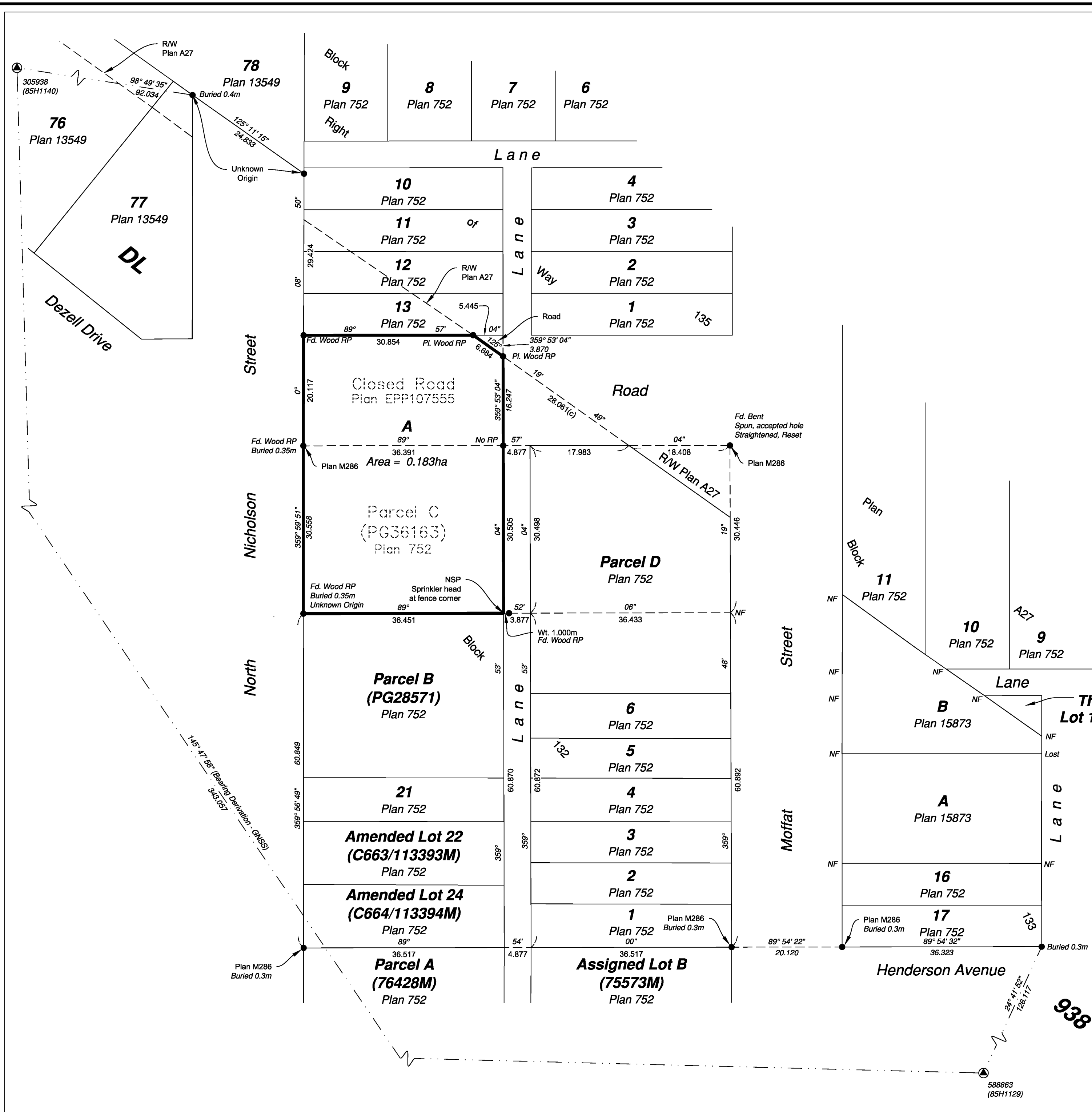


**PLAN EPP107556**



**Reference Plan of Parcel C(PG36163) of Block 132, and that part of Closed Road as shown on Plan EPP107555, Both of District Lot 938, Cariboo District, Plan 752.**

Pursuant to Section 100(1)(b) of the Land Title Act.  
 Integrated survey area No. 39 Prince George, BC,  
 NAD83 (CSRS) 4.0.0.BC.1  
 BCGS 93G.097



The intended plot size of this plan is 559mm in width by 432mm in height (C size) when plotted at a scale of 1:500.

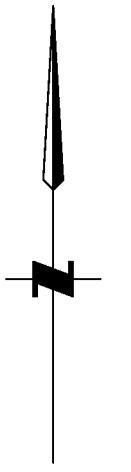
All distances are in metres and decimals thereof.

Grid bearings are derived from observations between geodetic control monuments 305938(85H1140) and 588863(85H1129) and are referred to the central meridian of UTM Zone10 North (123° west longitude).

The UTM coordinates and estimated absolute accuracy achieved have been derived from mascot published coordinates and standard deviations for geodetic control monuments 305938(85H1140) and 588863(85H1129).

This plan shows horizontal ground-level distances unless otherwise specified. To compute grid distances, multiply ground-level distances by the average combined factor of 0.9995097 which has been derived from control monument 305938(85H1140).

Note:  
 This plan shows one or more witness posts which are not set on the true corner(s).



**Legend**

- |                |                             |
|----------------|-----------------------------|
| <b>Symbols</b> | <b>Description</b>          |
| ▲              | Found Control Monument      |
| ●              | Found Standard Iron Post    |
| CSF            | Combined Scale Factor       |
| EAA            | Estimated Absolute Accuracy |
| NSP            | Not Suitable to Post        |
| (c)            | Calculated                  |

Georeferencing Positions				
UTM Coordinates, Zone 10, NAD 83 (CSRS), 4.0.0.BC.1				
Station	Northing	Easting	EAA	CSF
305938	5975561.31	513869.42	0.05	0.9995097
588863	5975277.71	514062.15	0.05	0.9995101

This plan lies within the jurisdiction of the approving officer for the City of Prince George.

The field survey represented by this plan was completed on the 4th day of December, 2020.

Scott A. Maguire, BCLS 903

This plan lies within the Regional District of Fraser-Fort George

File: 20144-CON

**KOHLER LAND SURVEYING INC.**  
 1698 Lyon Street South  
 Prince George, BC V2N 1T3  
 Tel: (250) 614-9703