

# EXPLANATORY PLAN OVER PART OF LOTS 4 AND 5, BLOCK 30, DISTRICT LOT 937, CARIBOO DISTRICT, PLAN 752.

PLAN EPP107374

PURSUANT TO SECTION 99(1)(e) OF THE LAND TITLE ACT.  
FOR EASEMENT PURPOSES

THIS PLAN LIES WITHIN INTEGRATED SURVEY AREA  
No. 39 PRINCE GEORGE, BC, NAD83 (CSRS) 4.0.0.BC.1

BCGS 93G.097



THE INTENDED PLOT SIZE OF THIS PLAN IS 432mm IN WIDTH BY 280mm IN HEIGHT (B SIZE) WHEN PLOTTED AT A SCALE OF 150.

ALL DISTANCES ARE IN METRES AND DECIMALS THEREOF.

GRID BEARINGS ARE DERIVED FROM PLAN EPP91957 AND ARE REFERRED TO THE CENTRAL MERIDIAN OF UTM ZONE 10 (123° WEST LONGITUDE).

THE UTM COORDINATES AND ESTIMATED ABSOLUTE ACCURACY ACHIEVED HAVE BEEN DERIVED FROM PLAN EPP91957.

THIS PLAN SHOWS HORIZONTAL GROUND-LEVEL DISTANCES UNLESS OTHERWISE SPECIFIED. TO COMPUTE GRID DISTANCES, MULTIPLY GROUND-LEVEL DISTANCES BY THE AVERAGE COMBINED FACTOR OF 0.9995128. THE COMBINED FACTOR HAS BEEN DETERMINED FROM PLAN EPP91957.

## LEGEND

SYMBOLS	DESCRIPTION
EAA	ESTIMATED ABSOLUTE ACCURACY

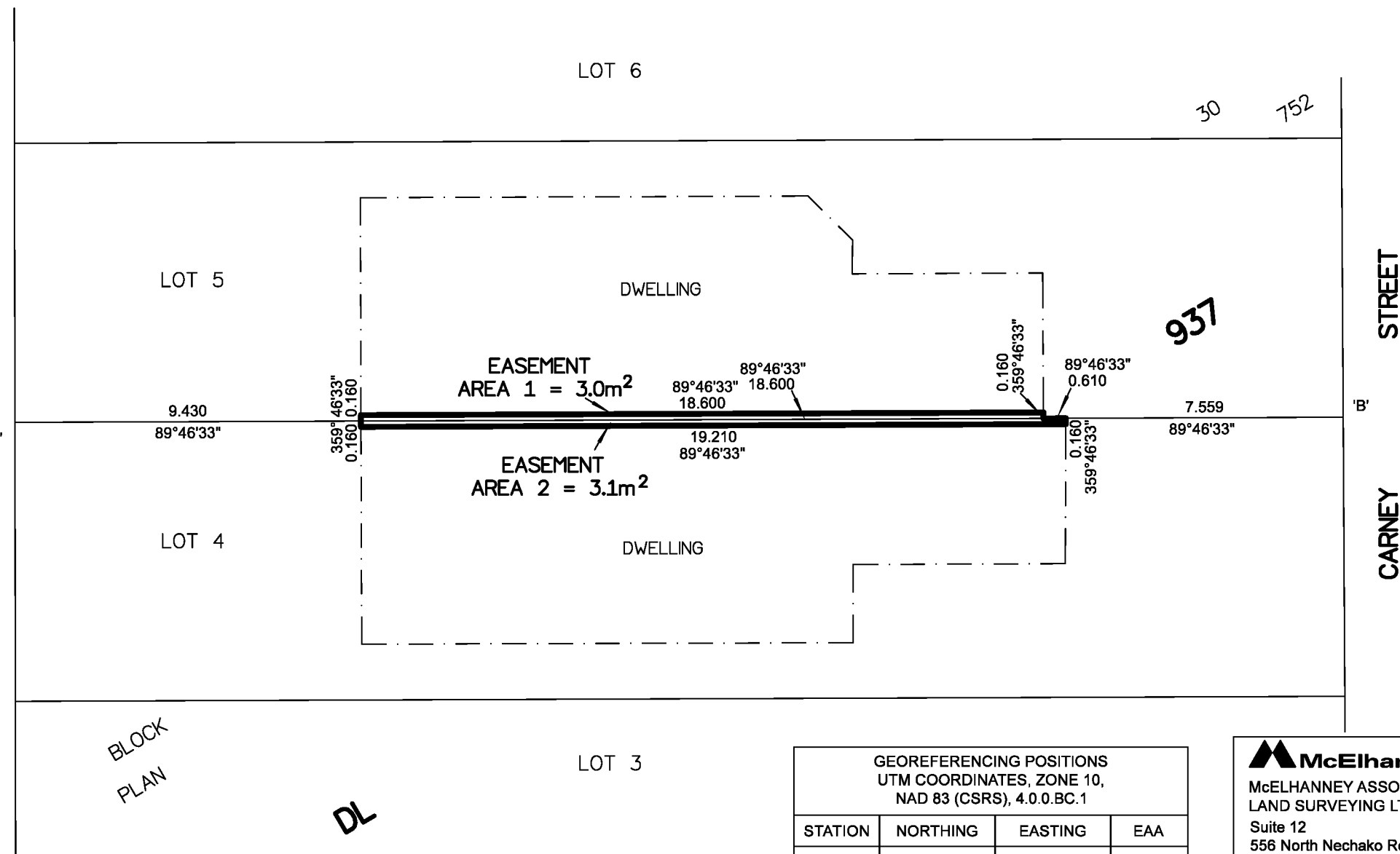


BOOK OF REFERENCE		
LEGAL DESCRIPTION	PID	AREA
LOT 5, BLOCK 30, DISTRICT LOT 937, CARIBOO DISTRICT, PLAN 752	007-864-329	AREA 1 = 3.0 m <sup>2</sup>
LOT 4, BLOCK 30, DISTRICT LOT 937, CARIBOO DISTRICT, PLAN 752	007-864-311	AREA 2 = 3.1 m <sup>2</sup>
TOTAL AREA = 6.1 m <sup>2</sup>		

THIS PLAN IS BASED ON THE FOLLOWING LAND TITLE AND SURVEY AUTHORITY OF BC RECORDS:  
EPP91957

SHAUNA C. GOERTZEN, BCLS 798  
NOVEMBER 30, 2020

THIS PLAN LIES WITHIN THE REGIONAL DISTRICT OF FRASER-FORT GEORGE.



GEOREFERENCING POSITIONS UTM COORDINATES, ZONE 10, NAD 83 (CSRS), 4.0.0.BC.1			
STATION	NORTHING	EASTING	EAA
'A'	5974532.10	515105.92	0.09
'B'	5974532.25	515142.10	0.09

**McElhanney**  
McELHANNEY ASSOCIATES  
LAND SURVEYING LTD.  
Suite 12  
556 North Nechako Road  
Prince George BC  
Canada V2K 1A1  
Tel 250 561 2229

File No. 2341-06704-EXPL