

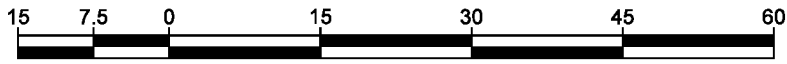
# REFERENCE PLAN TO ACCOMPANY BY-LAW No. 8921 (PRINCE GEORGE, BC) CLOSING A PORTION OF ROAD SHOWN DEDICATED ON PLAN 24376, DISTRICT LOT 4046, CARIBOO DISTRICT.

PLAN EPP107326

PURSUANT TO SECTION 120 OF THE LAND TITLE ACT  
AND SECTION 40 OF THE COMMUNITY CHARTER.

THIS PLAN LIES WITHIN INTEGRATED SURVEY AREA  
No. 39 PRINCE GEORGE, BC, NAD83 (CSRS) 4.0.0.BC.1

BCGS 93G.097



THE INTENDED PLOT SIZE OF THIS PLAN IS 280mm IN WIDTH BY 432mm IN  
HEIGHT (B SIZE) WHEN PLOTTED AT A SCALE OF 750.

ALL DISTANCES ARE IN METRES AND DECIMALS THEREOF.

GRID BEARINGS ARE DERIVED FROM DIFFERENTIAL DUAL FREQUENCY GNSS  
OBSERVATIONS TO GEODETIC CONTROL MONUMENTS 86H1640 AND 86H1641  
AND ARE REFERRED TO THE CENTRAL MERIDIAN OF UTM ZONE 10  
(123° WEST LONGITUDE).

THE UTM COORDINATES AND ESTIMATED ABSOLUTE ACCURACY ACHIEVED HAVE  
BEEN DERIVED FROM OBSERVATIONS TO GEODETIC CONTROL MONUMENT  
86H1640.

THIS PLAN SHOWS HORIZONTAL GROUND-LEVEL DISTANCES UNLESS  
OTHERWISE SPECIFIED. TO COMPUTE GRID DISTANCES, MULTIPLY  
GROUND-LEVEL DISTANCES BY THE AVERAGE COMBINED FACTOR OF  
0.9994888. THE AVERAGE COMBINED FACTOR HAS BEEN DETERMINED BASED ON  
OBSERVATIONS TO GEODETIC CONTROL MONUMENTS 86H1640 AND 86H1641.

## LEGEND

SYMBOLS		DESCRIPTION
FOUND	PLACED	
		CONTROL MONUMENT
		STANDARD IRON POST
EAA		ESTIMATED ABSOLUTE ACCURACY



CRESCENT

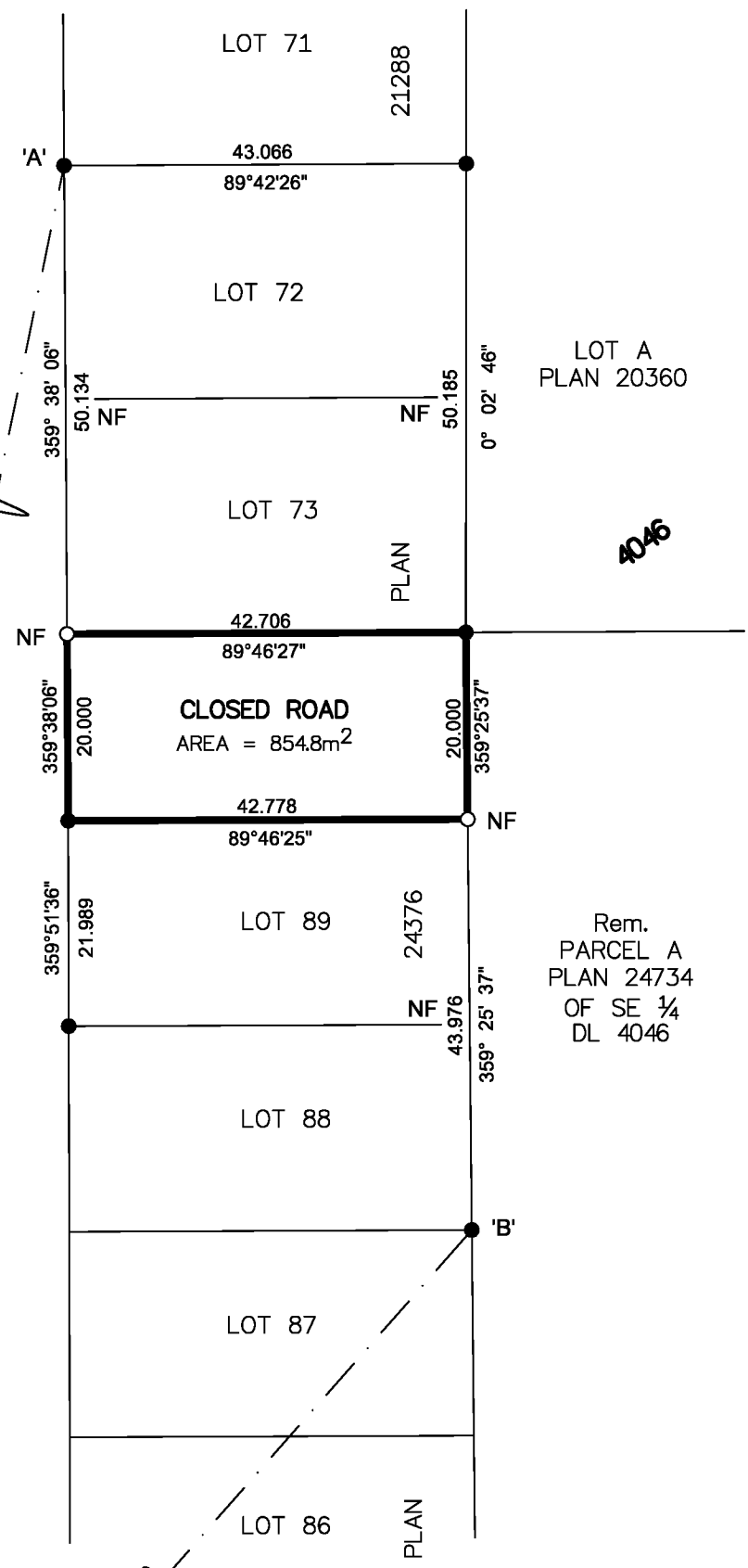
WILDWOOD

DL

4046

LOT A  
PLAN 20360

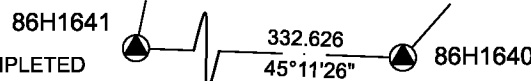
Rem.  
PARCEL A  
PLAN 24734  
OF SE 1/4  
DL 4046



GEOREFERENCING POSITIONS UTM COORDINATES, ZONE 10, NAD 83 (CSRS), 4.0.0.BC.1			
STATION	NORTHING	EASTING	EAA
Fd.IP 'A'	5980755.24	513800.98	0.09
Fd.IP 'B'	5980641.36	513844.62	0.09

THE FIELD SURVEY REPRESENTED BY THIS PLAN WAS COMPLETED  
ON THE 30th DAY OF NOVEMBER, 2020  
SHAUNA C. GOERTZEN, BCLS 798

THIS PLAN LIES WITHIN THE REGIONAL DISTRICT OF FRASER-FORT GEORGE.



**McElhanney**  
McELHANNEY ASSOCIATES  
LAND SURVEYING LTD.  
Suite 12  
556 North Nechako Road  
Prince George BC  
Canada V2K 1A1  
Tel 250 561 2229

File No. 2341-06770-RC