

**PLAN EPP107151**

**Reference Plan of Lot 37,  
District Lot 4047, Cariboo District,  
Plan 11088, Except Plans 29887  
and PGP37260.**

Pursuant to Section 100(1)(a) of the Land Title Act.  
Integrated survey area No. 39 Prince George, BC,  
NAD83 (CSRS) 4.0.0.BC.1

BCGS 93G.097



The intended plot size of this plan is 559mm in width by 432mm in height (C size) when plotted at a scale of 1:300.

All distances are in metres and decimals thereof.

Grid bearings are derived from observations between geodetic control monuments 838235 and 832907 and are referred to the central meridian of UTM Zone 10 North (123° west longitude).

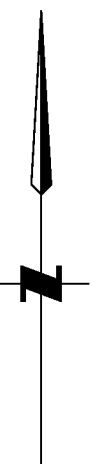
The UTM coordinates and estimated absolute accuracy achieved have been derived from mascot published coordinates and standard deviations for geodetic control monuments 838235 and 832907.

This plan shows horizontal ground-level distances unless otherwise specified. To compute grid distances, multiply ground-level distances by the average combined factor of 0.9994891 which has been derived from control monument 838235.

Note:  
This plan shows one or more witness posts which are not set on the true corner(s).

**Legend**

Symbols	Description
	Found Control Monument
	Found Standard Iron Post
CSF	Combined Scale Factor
EAA	Estimated Absolute Accuracy
NSP	Not Suitable to Post

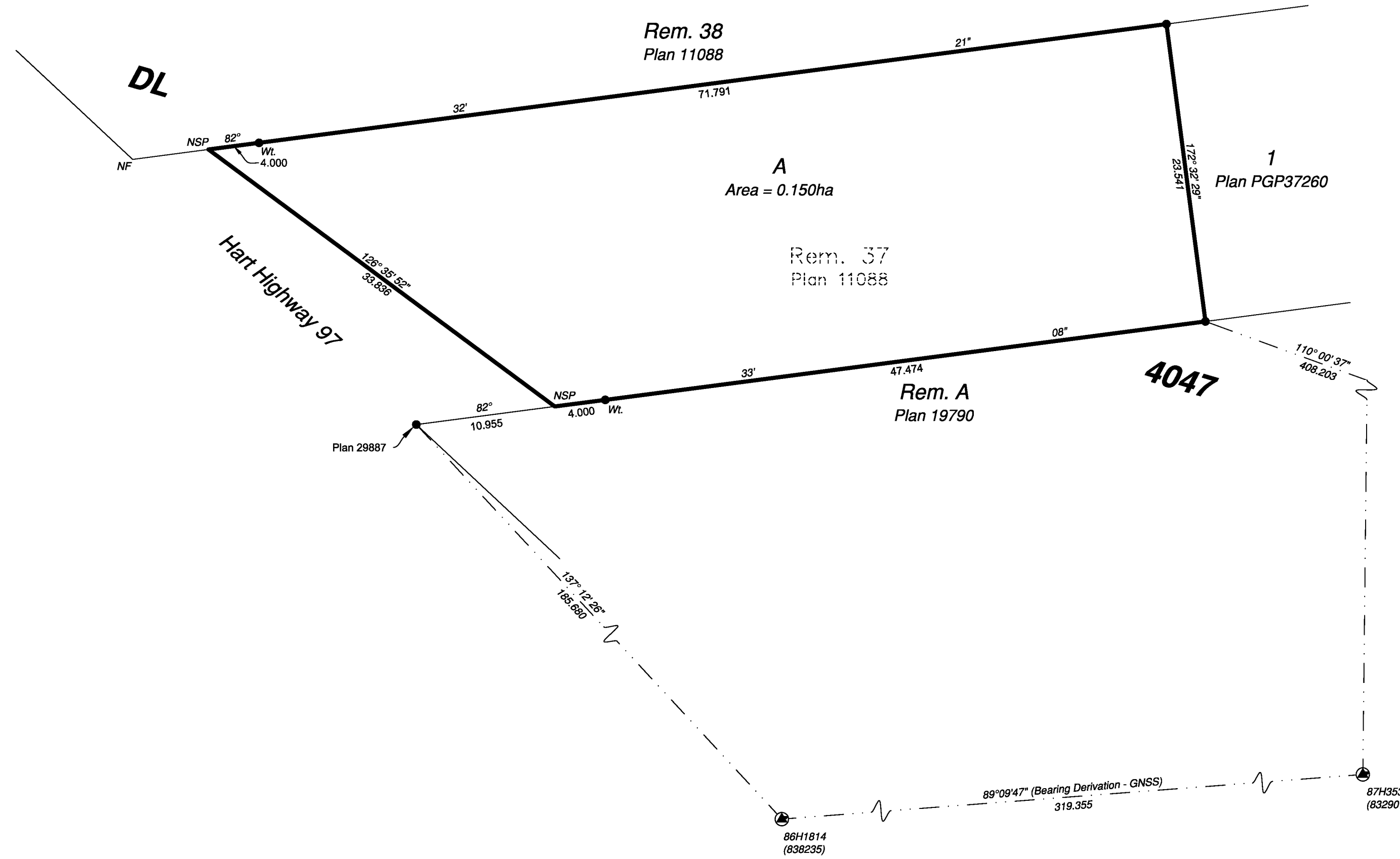


Georeferencing Positions UTM Coordinates, Zone 10, NAD 83 (CSRS), 4.0.0.BC.1				
Station	Northing	Easting	EAA	CSF
838235	5982386.61	513975.46	0.05	0.9994891
832907	5982391.27	514294.62	0.05	0.9994897

The field survey represented by this plan was completed on the 19th day of November, 2020.

Scott A. Maguire, BCLS 903

This plan lies within the Regional District of Fraser-Fort George



File: 20156-REF

**KOEHLER LAND SURVEYING INC.**  
1698 Lyon Street South  
Prince George, BC V2N 1T3  
Tel: (250) 614-9703