

# REFERENCE PLAN OF ROAD DEDICATION OVER PART OF LOT A, PLAN 34387, EXCEPT PLANS PGP38500 AND PGP43287; AND PART OF LOT 3, PLAN 23130; ALL IN DISTRICT LOT 754, CARIBOO DISTRICT.

PLAN EPP106017

PURSUANT TO SECTION 107 OF THE LAND TITLE ACT.  
FOR ROAD DEDICATION

THIS PLAN LIES WITHIN INTEGRATED SURVEY AREA  
No. 39 PRINCE GEORGE, BC, NAD83 (CSRS) 4.0.0.BC.1

BCGS 93G.087



THE INTENDED PLOT SIZE OF THIS PLAN IS 560mm IN WIDTH BY 432mm IN HEIGHT (C SIZE) WHEN PLOTTED AT A SCALE OF 1:1000.

ALL DISTANCES ARE IN METRES AND DECIMALS THEREOF.

GRID BEARINGS ARE DERIVED FROM OBSERVATIONS BETWEEN GEODETIC CONTROL MONUMENTS 86H1818 AND 86H1546.

THE UTM COORDINATES AND ESTIMATED ABSOLUTE ACCURACY ACHIEVED HAVE BEEN DERIVED FROM MASCOT PUBLISHED COORDINATES AND STANDARD DEVIATIONS FOR GEODETIC CONTROL MONUMENT 86H1546.

THIS PLAN SHOWS HORIZONTAL GROUND-LEVEL DISTANCES UNLESS OTHERWISE SPECIFIED. TO COMPUTE GRID DISTANCES, MULTIPLY GROUND-LEVEL DISTANCES BY THE AVERAGE COMBINED FACTOR OF 0.9995088 WHICH HAS BEEN DERIVED FROM GEODETIC CONTROL MONUMENT 86H1546.

NOTE:  
THIS PLAN SHOWS ONE OR MORE WITNESS POSTS WHICH ARE NOT SET ON THE TRUE CORNER(S).

SOME POSTS AND LINES ARE EXAGGERATED FOR CLARITY.

## LEGEND

| SYMBOLS      | DESCRIPTION                     |
|--------------|---------------------------------|
| FOUND PLACED |                                 |
| ▲            | CONTROL MONUMENT                |
| ●            | STANDARD IRON POST              |
| ○            | EAA ESTIMATED ABSOLUTE ACCURACY |
| ●            | SIP SHORT IRON POST             |

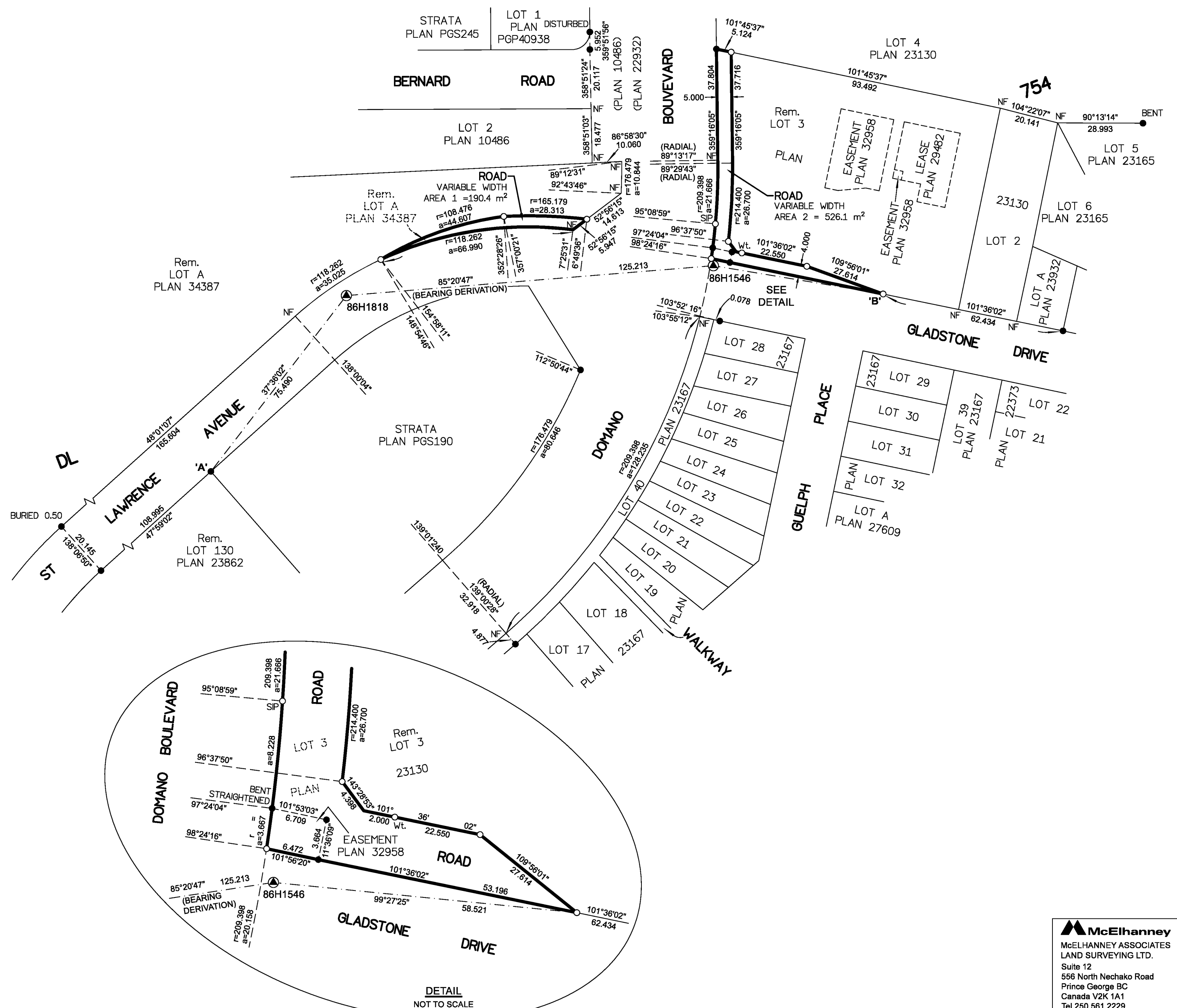


| GEOREFERENCING POSITIONS<br>UTM COORDINATES, ZONE 10,<br>NAD 83 (CSRS), 4.0.0.BC.1 |            |           |      |
|--|------------|-----------|------|
| STATION  | NORTHING   | EASTING   | EAA  |
| Fd. IP 'A'   | 5967795.17 | 515215.24 | 0.12 |
| Pl. IP 'B'   | 5967855.49 | 515443.71 | 0.12 |

| BOOK OF REFERENCE  |             |                               |
|--|-------------|-------------------------------|
| LEGAL DESCRIPTION  | PID         | AREA                          |
| LOT A, DISTRICT LOT 754, CARIBOO DISTRICT, PLAN 34387, EXCEPT PLANS PGP38500 AND PGP43287. | 015-734-391 | AREA 1 = 190.4 m <sup>2</sup> |
| LOT 3, DISTRICT LOT 754, CARIBOO DISTRICT, PLAN 23130.                                     | 008-588-317 | AREA 2 = 526.1 m <sup>2</sup> |
| TOTAL ROAD AREA = 716.5 m <sup>2</sup>   |             |                               |

THE FIELD SURVEY REPRESENTED BY THIS PLAN WAS COMPLETED  
ON THE 6th DAY OF OCTOBER, 2020  
SHAUNA C. GOERTZEN, BCLS 798

THIS PLAN LIES WITHIN THE REGIONAL DISTRICT OF FRASER-FORT GEORGE.



**McElhanney**  
McELHANNEY ASSOCIATES  
LAND SURVEYING LTD.  
Suite 12  
556 North Nechako Road  
Prince George BC  
Canada V2K 1A1  
Tel 250 561 2229  
File No. 2341-6757-RD

Filed PG EPP106017 EPP106017 160-470-0615 RCVD:2020-11-24 ROST:2020-12-04 03:06 Prince George, City of