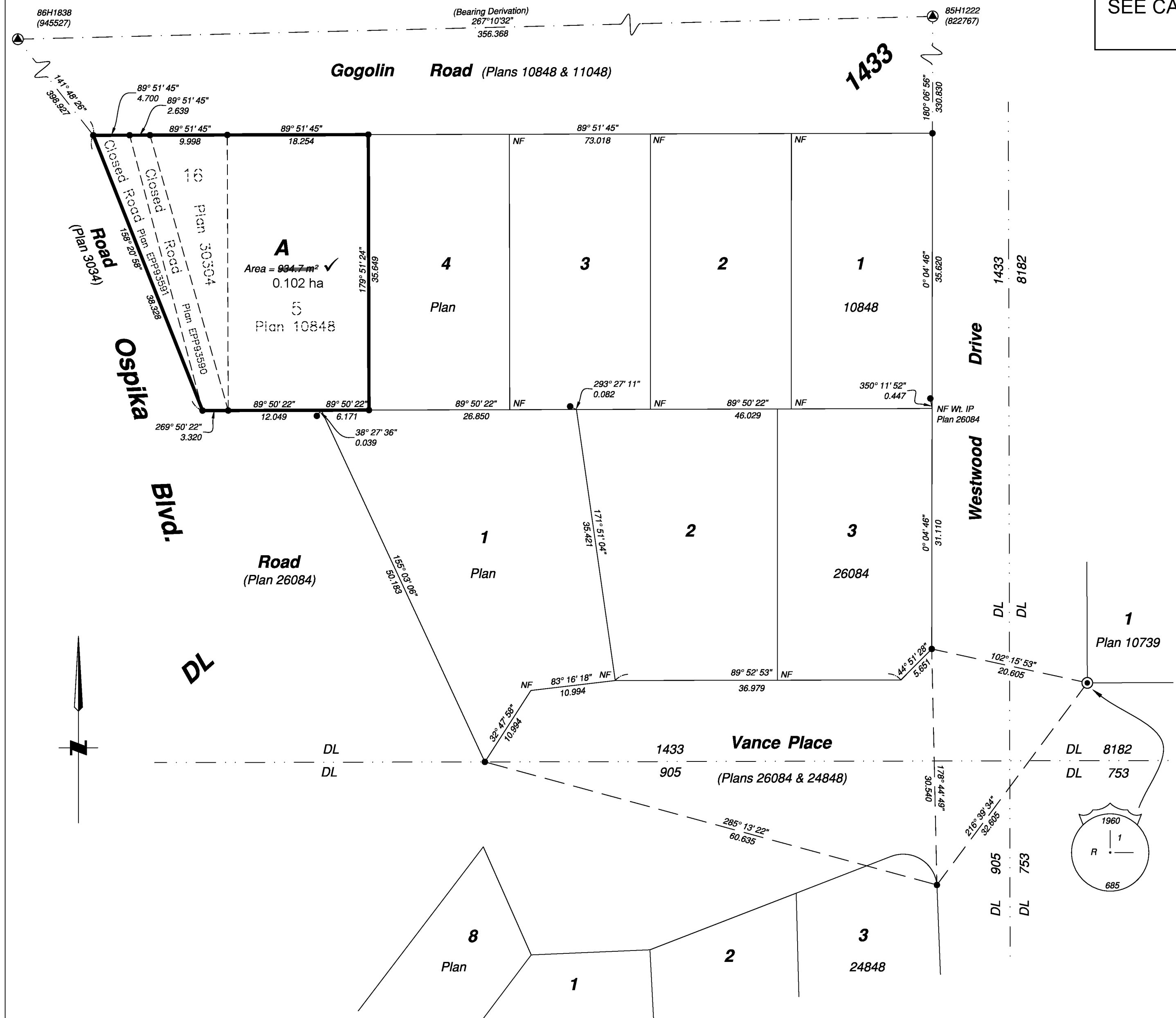


**PLAN EPP105789**

CORRECTED THIS 28th DAY OF JULY 2021  
SEE CA9229895



**Reference Plan of:**  
**1: Lot 5, Plan 10848;**  
**2: Lot 16, Plan 30304;**  
**3: That part of Closed Road as shown on Plan EPP93590; and**  
**4: That part of Closed Road as shown on Plan EPP93591; all in District Lot 1433, Cariboo District**

PURSUANT TO SECTION 100(1)(b) OF THE LAND TITLE ACT.

Integrated survey area No. 39 Prince George, BC,  
NAD83 (CSRS) 4.0.0.BC.1

BCGS 93G.087



The intended plot size of this plan is 280mm in width by 432mm in height (C size) when plotted at a scale of 1:400.

All distances are in metres and decimals thereof.

Grid bearings are derived from observations between geodetic control monuments 85H1222 and 86H1838 and are referred to the central meridian of UTM Zone 10 N (123° West Longitude).

The UTM coordinates and estimated horizontal positional accuracy achieved have been derived from mascot published coordinates and standard deviations for geodetic control monuments 85H1222 and 86H1838.

This plan shows horizontal ground-level distances unless otherwise specified. To compute grid distances, multiply ground-level distances by the average combined factor of 0.9995123 which has been derived from control monument 85H1222.

Note:  
Some posts are exaggerated for clarity.

**Legend**

Found	Placed	Description
▲	▲	Control Monument
●	●	Standard Iron Post
⊙	⊙	Standard Concrete Post
CSF		Combined Scale Factor
AHA		Absolute Horizontal Accuracy

Georeferencing Positions UTM Coordinates, Zone 10, NAD 83 (CSRS), 4.0.0.BC.1				
Station	Northing	Easting	AHA	CSF
85H1222	5970710.48	514481.84	0.10	0.9995123
86H1838	5970692.93	514126.08	0.10	0.9995111

The field survey represented by this plan was completed on the 2nd day of October, 2020

Albert Koehler, BCLS 974

This plan lies within the Regional District of Fraser-Fort George

File: 19058-CONS-R2

**KOEHLER LAND SURVEYING INC.**  
 1698 Lyon Street South  
 Prince George, BC V2N 1T3  
 Tel: (250) 614-9703