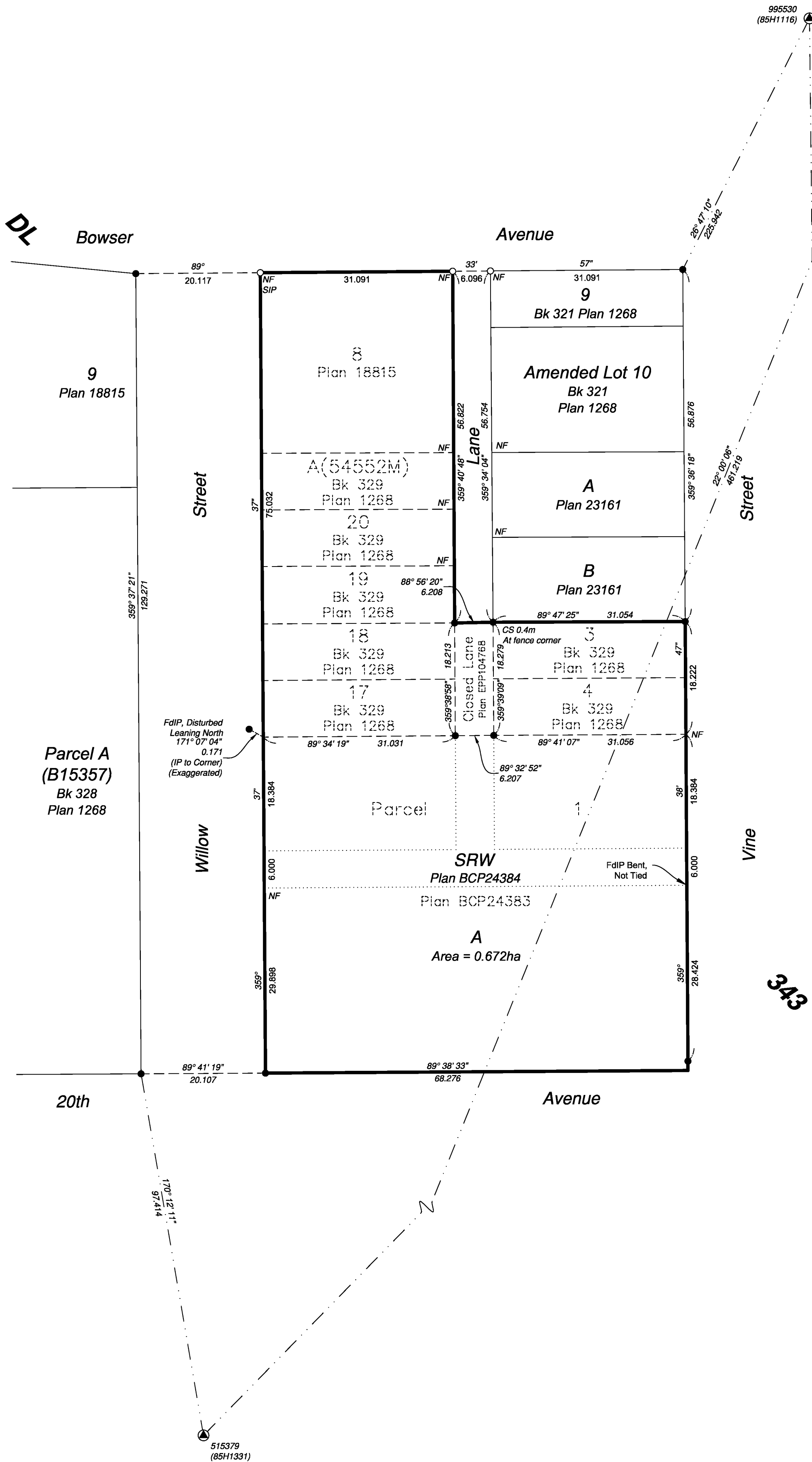


PLAN EPP104769



Reference Plan of:
1: Lot 8, Plan 18815,
2: Lot A (54552M) Block 329, Plan 1268,
3: Lots 3 and 4, and 17 through 20, Block 329, Plan 1268
4: Parcel 1, Plan BCP24383
5: That part of Closed Lane as shown on Plan EPP104768
All in District Lot 343, Cariboo District.

Integrated survey area No. 39 Prince George, BC,
 NAD83 (CSRS) 4.0.0.BC.1
 Pursuant to Section 100(1)(b) of the Land Title Act.

BCGS93G.097



The intended plot size of this plan is 432mm in width by 559mm in height (C size) when plotted at a scale of 1:500.

All distances are in metres and decimals thereof.

Grid bearings are derived from observations between geodetic control monuments 515379 (85H1331) and 995530 (85H1116) and are referred to the central meridian of UTM Zone 10 North (123° west longitude).

The UTM coordinates and estimated absolute accuracy achieved have been derived from MASCO published coordinates and standard deviations for geodetic control monuments 515379 (85H1331) and 995530 (85H1116).

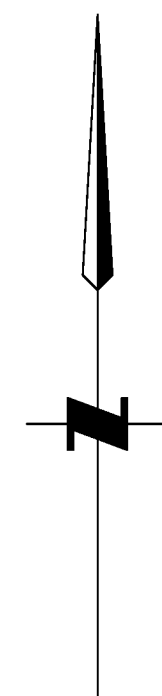
This plan shows horizontal ground-level distances unless otherwise specified. To compute grid distances, multiply ground-level distances by the average combined factor of 0.9995155 which has been derived from control monument 515379 (85H1331).

Note:
 This plan shows one or more witness posts which are not set on the true corner(s).
 Some posts are exaggerated for clarity.

Legend

Found	Placed	Description
▲		Control Monument
●	○	Standard Iron Post
CSF		Combined Scale Factor
EAA		Estimated Absolute Accuracy
SIP		Short Iron Post
CS		Countersunk
Bk		Block

Georeferencing Positions				
UTM Coordinates, Zone 10, NAD 83 (CSRS), 4.0.0.BC.1				
Station	Northing	Easting	EAA	CSF
515379	5972939.86	515558.60	0.05	0.9995155
995530	5973367.28	515731.31	0.05	0.9995157



The field survey represented by this plan was completed on the 24th day of July, 2020.

Scott A. Maguire, BCLS 903

This plan lies within the Regional District of Fraser-Fort George

File: 20038-CON

KOEHLER LAND SURVEYING INC.
 1698 Lyon Street South
 Prince George, BC V2N 1T3
 Tel: (250) 614-9703